

# MONUMENT 196E

## CERTIFICATE OF LOCATION OF GOVERNMENT CORNER

Monument on the East-West Quarter Line, West of the Center of Section 23,  
Township 30 North, Range 22 West, County of Ramsey, State of Minnesota.

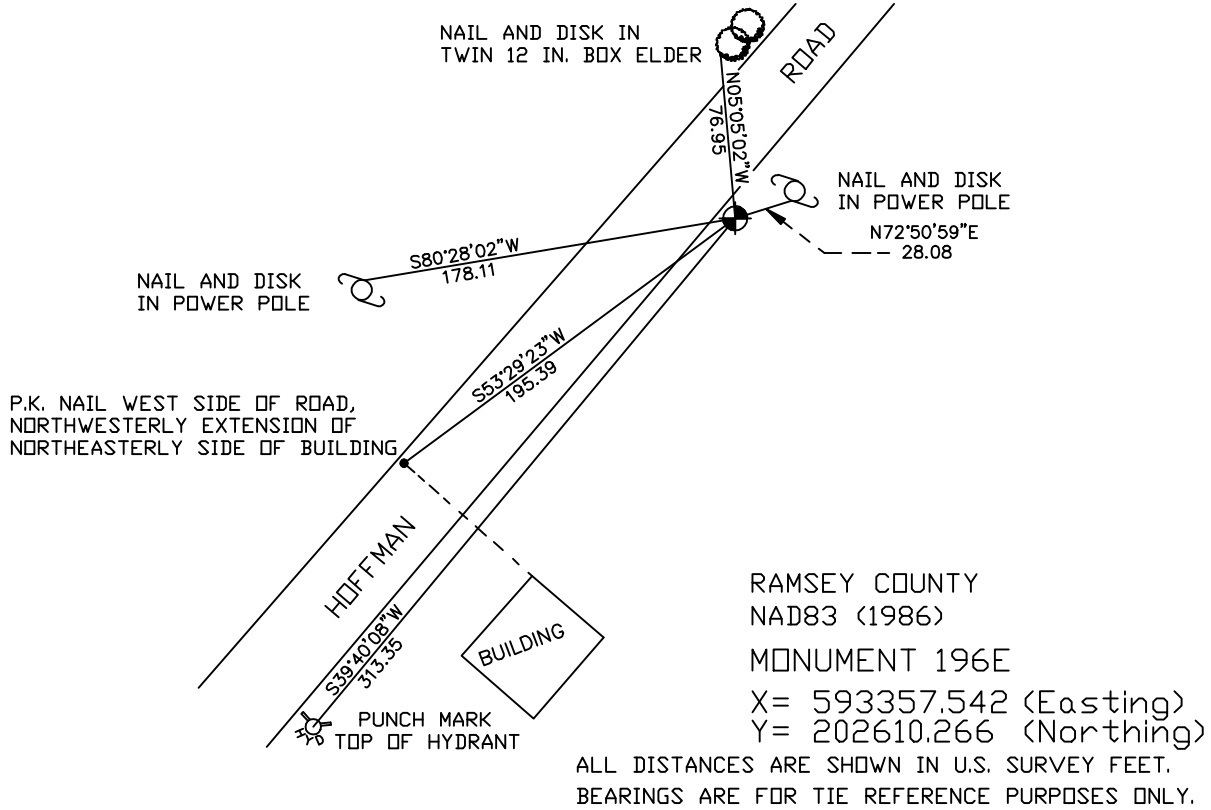
At the corner location shown on the sketch

On March 28, 2005 found a cast iron monument.

left monument as found     lowered monument     removed monument (explain)

On \_\_\_\_\_ placed a \_\_\_\_\_

## SKETCH OF REFERENCE TIES



RAMSEY COUNTY  
NAD83 (1986)  
MONUMENT 196E  
X = 593357.542 (Easting)  
Y = 202610.266 (Northing)  
ALL DISTANCES ARE SHOWN IN U.S. SURVEY FEET.  
BEARINGS ARE FOR TIE REFERENCE PURPOSES ONLY.

Statements of evidence relative to this corner are on the following page(s).

I hereby certify that this document and the data contained herein was prepared by me or under my direct supervision this \_\_\_\_\_ day of \_\_\_\_\_, 20\_\_\_\_.

SIGNATURE

Minnesota License No. \_\_\_\_\_

County Surveyor     Land Surveyor

OFFICE OF COUNTY SURVEYOR

County of Ramsey

I hereby certify that this document was filed in the County Surveyor's office on the \_\_\_\_ day of \_\_\_\_\_, 20\_\_\_\_.

David D. Claypool, P.L.S., County Surveyor

By \_\_\_\_\_, Deputy

## MONUMENT 196E

**Found granite monument down 0.1 ft. and retied, July 19, 1974.**

**Replaced with cast iron monument after Metro Sewer construction,  
November 7, 1977.**

**Placed sign and post, February 7, 1991.**

**Retied monument, August 27, 1999.**

**Retied monument, March 28, 2005.**