

MONUMENT 194

CERTIFICATE OF LOCATION OF GOVERNMENT CORNER

East Quarter Corner of Section 21, Township 30 North, Range 22 West,
County of Ramsey, State of Minnesota.

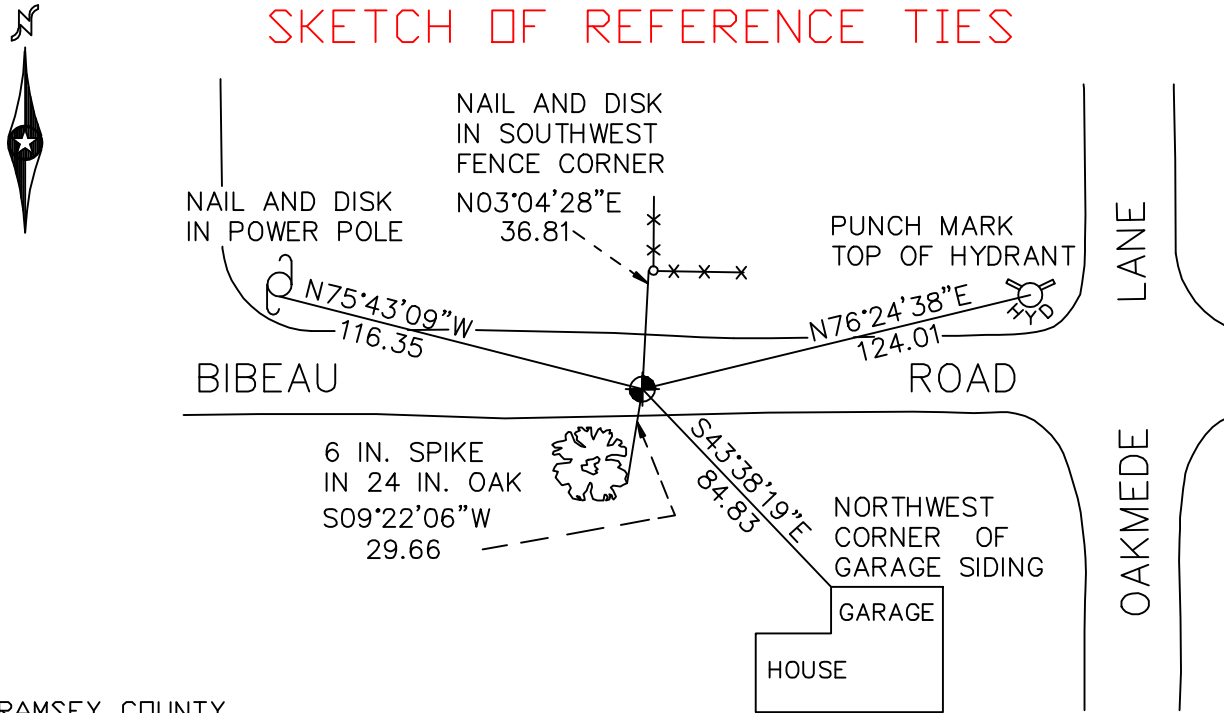
At the corner location shown on the sketch

On March 28, 2005 found a cast iron monument.

left monument as found lowered monument removed monument (explain)

On _____ placed a _____

SKETCH OF REFERENCE TIES



RAMSEY COUNTY
NAD83 (1986)

MONUMENT 194

X= 587189.802 (Easting)
Y= 202602.964 (Northing)

ALL DISTANCES ARE SHOWN IN U.S. SURVEY FEET.
BEARINGS ARE FOR TIE REFERENCE PURPOSES ONLY.

Statements of evidence relative to this corner are on the following page(s).

I hereby certify that this document and the data contained herein was prepared by me or under my direct supervision this _____ day of _____, 20____.

SIGNATURE

Minnesota License No. _____

County Surveyor Land Surveyor

OFFICE OF COUNTY SURVEYOR

County of Ramsey

I hereby certify that this document was filed in the County Surveyor's office on the ____ day of _____, 20____.

David D. Claypool, P.L.S., County Surveyor

By _____, Deputy

MONUMENT 194

Found granite monument in the center of dirt road, down 0.10 ft. and checked ties, May 29, 1974.

Monument retied before reconstruction of road; 20 in. cast iron monument set after reconstruction was completed, no date given in field book.

Found cast iron monument flush and retied, January 21, 1992.

Retied monument, October 1, 1999.

Retied monument, March 28, 2005.