

MONUMENT 193

CERTIFICATE OF LOCATION OF GOVERNMENT CORNER
Center of Section 21, Township 30 North, Range 22 West,
County of Ramsey, State of Minnesota.

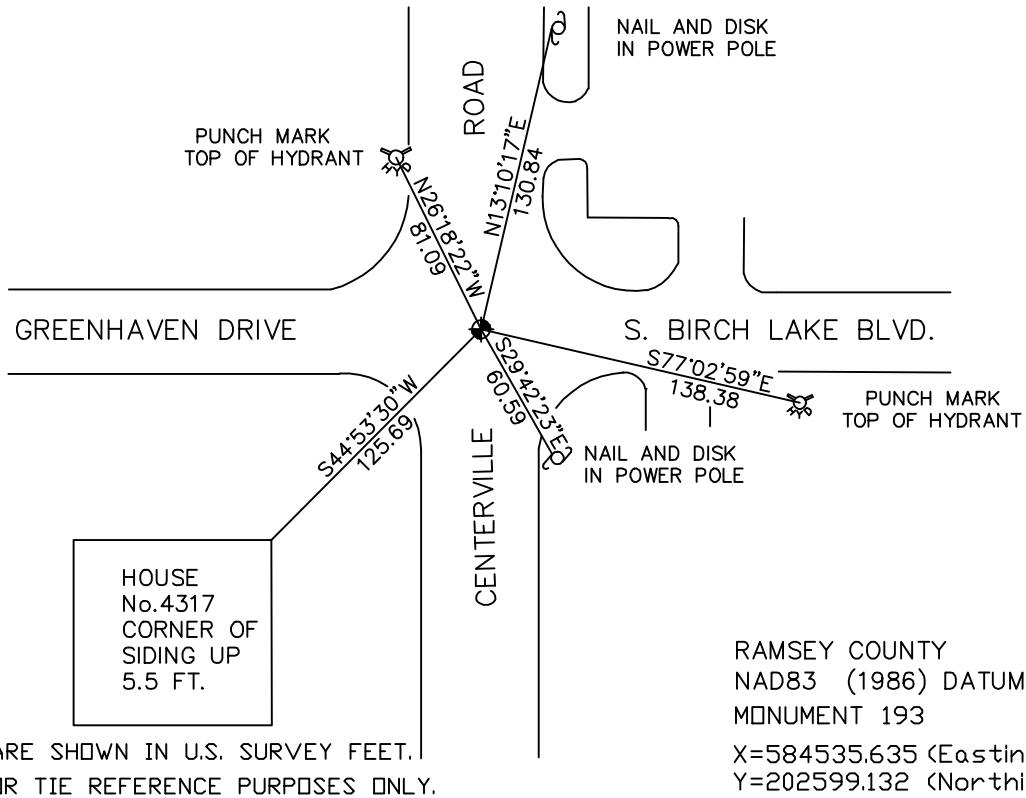
At the corner location shown on the sketch

On March 23, 2005 found a cast iron monument within a cast iron manhole assembly.

left monument as found, lowered monument, removed monument (explain)

On _____ placed a _____

SKETCH OF REFERENCE TIES



ALL DISTANCES ARE SHOWN IN U.S. SURVEY FEET.
BEARINGS ARE FOR TIE REFERENCE PURPOSES ONLY.

Statements of evidence relative to this corner are on the following page(s).

I hereby certify that this document and the data contained herein was prepared by me or under my direct supervision this _____ day of _____, 20____.

SIGNATURE

Minnesota License No. _____

- Land Surveyor Professional Engineer
 County Surveyor County Engineer

OFFICE OF COUNTY SURVEYOR

County of Ramsey

I hereby certify that this document was filed in the County Surveyor's office on the ____ day of _____, 20____.

David D. Claypool, P.L.S., County Surveyor

By _____, Deputy

MONUMENT 193

Found granite monument down 0.3 ft.; placed cast iron cap over the top, June 12, 1974.

Retied monument, June 24, 1974.

Granite monument fractured. Broke off more of the granite monument to place cast iron cap, June 26, 1987.

Monument flush; retied, January 21, 1992.

Retied monument, October 2, 1998.

Tied monument for removal by construction project, June 14, 2001.

Relocated position and set 20 in. cast iron monument 18 in. below surface. Contractor to set manhole assembly, October 21, 2002.

Retied monument, March 23, 2005.