

# MONUMENT 192

## CERTIFICATE OF LOCATION OF GOVERNMENT CORNER

East Quarter Corner of Section 20, Township 30 North, Range 22 West,  
County of Ramsey, State of Minnesota.

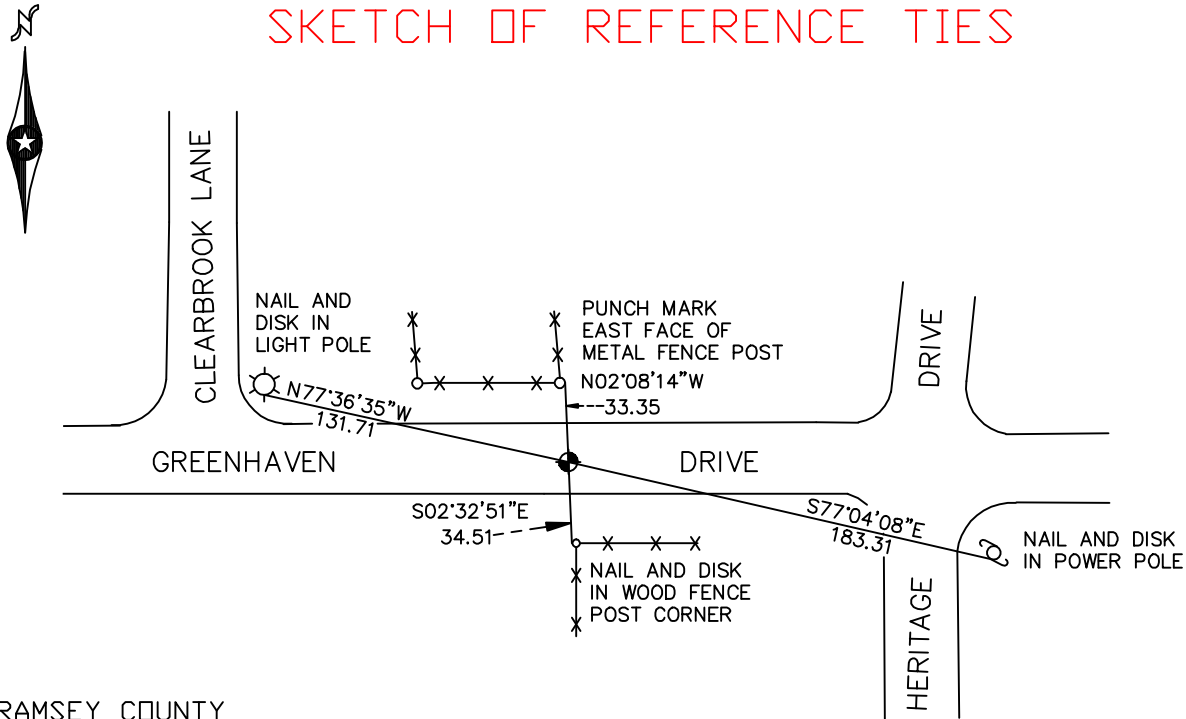
At the corner location shown on the sketch

On March 23, 2005 found a cast iron monument.

left monument as found     lowered monument     removed monument (explain)

On \_\_\_\_\_ placed a \_\_\_\_\_

## SKETCH OF REFERENCE TIES



RAMSEY COUNTY  
NAD83 (1986) DATUM

MONUMENT 192

X= 581907.721 (Easting)  
Y= 202594.074 (Northing)

ALL DISTANCES ARE SHOWN IN U.S. SURVEY FEET.  
BEARINGS ARE FOR TIE REFERENCE PURPOSES ONLY.

Statements of evidence relative to this corner are on the following page(s).

I hereby certify that this document and the data contained herein was prepared by me or under my direct supervision this \_\_\_\_\_ day of \_\_\_\_\_, 20\_\_\_\_.

SIGNATURE

Minnesota License No. \_\_\_\_\_

County Surveyor     Land Surveyor

OFFICE OF COUNTY SURVEYOR

County of Ramsey

I hereby certify that this document was filed in the County Surveyor's office on the \_\_\_\_ day of \_\_\_\_\_, 20\_\_\_\_.

David D. Claypool, P.L.S., County Surveyor

By \_\_\_\_\_, Deputy

## MONUMENT 192

**Found cast iron monument down +/-2 in., June 24, 1977.**

**Monument destroyed by construction in 1979.**

**Replaced 20 in. cast iron monument, April 17, 1981.**

**Found cast iron monument broken off, down +/- 0.4 ft., July 24, 1990.**

**Verified correct position by angles and distances of traverse work (sheet is in section folder). Placed short cast iron monument and retied, July 25, 1990.**

**Retied monument, June 25, 1998.**

**Retied monument, March 23, 2005.**