

MONUMENT 185

CERTIFICATE OF LOCATION OF GOVERNMENT CORNER
Center of Section 23, Township 30 North, Range 23 West,
County of Ramsey, State of Minnesota.

At the corner location shown on the sketch

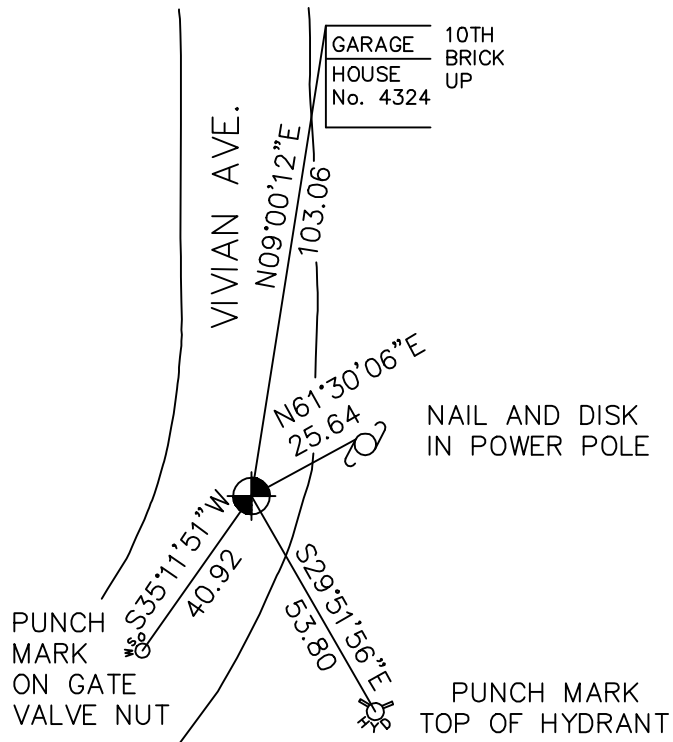
On May 3, 2005 found a cast iron monument within a cast iron
manhole assembly.

left monument as found, lowered monument, removed monument (explain)

On _____ placed a _____



SKETCH OF REFERENCE TIES



RAMSEY COUNTY
NAD83 (1986) DATUM
MONUMENT 185
X=563632.395 (Easting)
Y=202504.262 (Northing)

ALL DISTANCES ARE SHOWN IN U.S. SURVEY FEET.
BEARINGS ARE FOR TIE REFERENCE PURPOSES ONLY.

Statements of evidence relative to this corner are on the following page(s).

I hereby certify that this document and the data contained herein was prepared by me or under my direct supervision this _____ day of _____, 20____.

SIGNATURE

Minnesota License No. _____
 Land Surveyor Professional Engineer
 County Surveyor County Engineer

OFFICE OF COUNTY SURVEYOR

County of Ramsey

I hereby certify that this document was filed in the County Surveyor's office on the ____ day of _____, 20____.

David D. Claypool, P.L.S., County Surveyor

By _____, Deputy

MONUMENT 185

Found cast iron monument flush, retied, October 23, 1974.

Retied monument, January 22, 1992.

Monument tied and removed for City of Shoreview's reconstruction of Victoria St., May 22, 1997.

Dug to set new 20 in. cast iron monument and found 2 in. diameter pipe down 22 in. Pulled 2 in. pipe and set 20 in. cast iron monument, September 2, 1997.

Monument tied out for removal during road reconstruction, August 8, 2004.

Installed 20 in. cast iron monument and cast iron manhole assembly, April 27, 2005.

Retied monument, May 3, 2005.