

# MONUMENT 179E

## CERTIFICATE OF LOCATION OF GOVERNMENT CORNER

Monument on the East-West Quarter Line, East of the Center of Section 20,  
Township 30 North, Range 23 West, County of Ramsey, State of Minnesota.

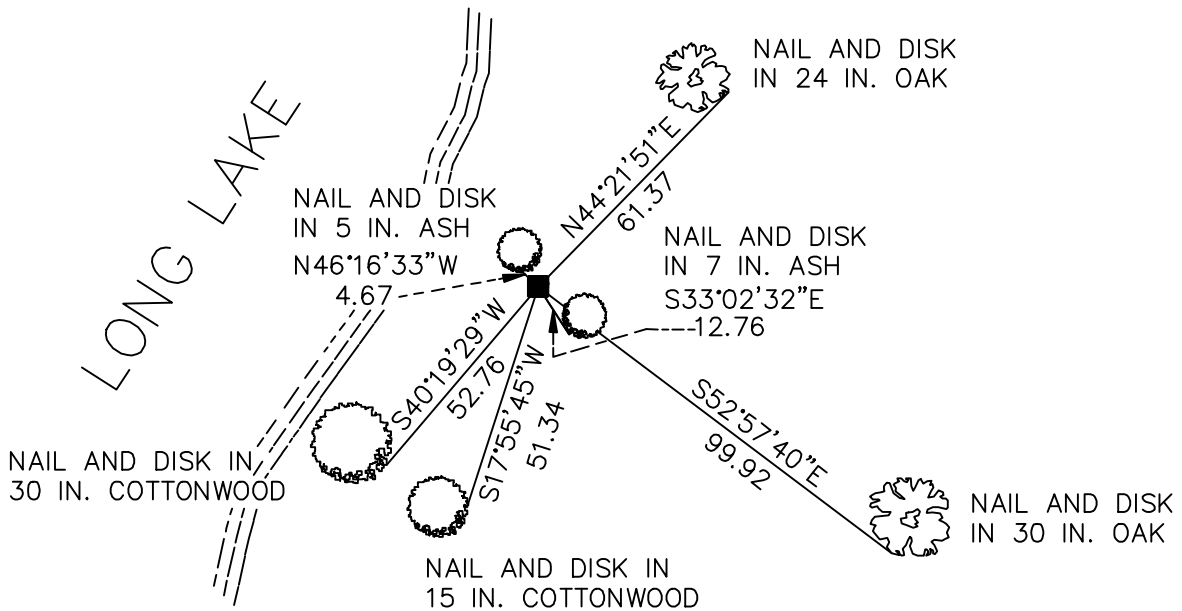
At the corner location shown on the sketch

On March 21, 2005 found a granite monument.

left monument as found     lowered monument     removed monument (explain)

On \_\_\_\_\_ placed a \_\_\_\_\_

### SKETCH OF REFERENCE TIES



RAMSEY COUNTY  
NAD83 (1986)  
MONUMENT 179E

X= 548019.664 (Easting)  
Y= 202411.816 (Northing)

ALL DISTANCES ARE SHOWN IN U.S. SURVEY FEET.  
BEARINGS ARE FOR TIE REFERENCE PURPOSES ONLY.

Statements of evidence relative to this corner are on the following page(s).

I hereby certify that this document and the data  
contained herein was prepared by me or under  
my direct supervision this \_\_\_\_\_ day  
of \_\_\_\_\_, 20\_\_\_\_.

SIGNATURE

Minnesota License No. \_\_\_\_\_

County Surveyor     Land Surveyor

OFFICE OF COUNTY SURVEYOR

County of Ramsey

I hereby certify that this document was filed in  
the County Surveyor's office on the \_\_\_\_ day  
of \_\_\_\_\_, 20\_\_\_\_.

David D. Claypool, P.L.S., County Surveyor

By \_\_\_\_\_, Deputy

## MONUMENT 179E

**Found granite monument flush with ground and retied, March 31, 1983.**

**Placed sign and post +/-1 ft. south of monument, July 13, 1992.**

**Found granite monument; no post; tied; set sign and post, April 4, 2001.**

**Retied monument, March 21, 2005.**