

# MONUMENT 176

CERTIFICATE OF LOCATION OF GOVERNMENT CORNER  
 West Quarter Corner of Section 19, Township 30 North,  
 Range 23 West, County of Ramsey, State of Minnesota.

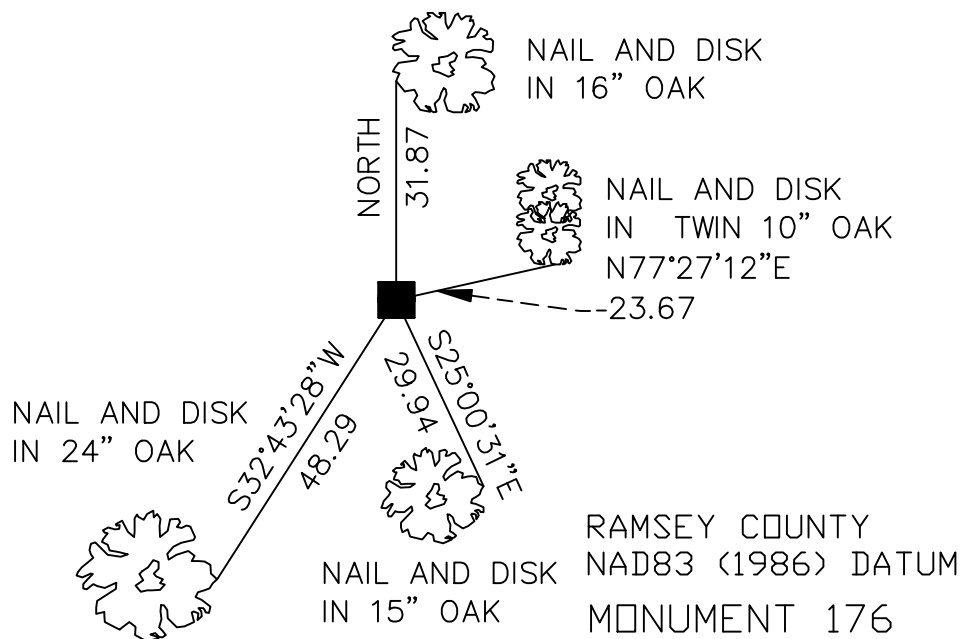
At the corner location shown on the sketch

On June 3, 2005 found a granite monument.

left monument as found,  lowered monument,  removed monument (explain)

On \_\_\_\_\_ placed a \_\_\_\_\_

## SKETCH OF REFERENCE TIES



ALL DISTANCES ARE SHOWN IN U.S. SURVEY FEET.  
 BEARINGS ARE FOR TIE REFERENCE PURPOSES ONLY.

X=540300.260 (Easting)  
 Y=202280.146 (Northing)

Statements of evidence relative to this corner are on the following page(s).

I hereby certify that this document and the data contained herein was prepared by me or under my direct supervision this \_\_\_\_\_ day of \_\_\_\_\_, 20\_\_\_\_.

SIGNATURE

Minnesota License No. \_\_\_\_\_

- Land Surveyor       Professional Engineer  
 County Surveyor     County Engineer

OFFICE OF COUNTY SURVEYOR

County of Ramsey

I hereby certify that this document was filed in the County Surveyor's office on the \_\_\_\_ day of \_\_\_\_\_, 20\_\_\_\_.

David D. Claypool, P.L.S., County Surveyor

By \_\_\_\_\_, Deputy

## MONUMENT 176

**Found granite monument flush and retied, October 25, 1974.**

**Found granite monument on steep slope to east with post 1 ft. west of monument, April 3, 2001.**

**Retied monument, placed sign and post 0.75 ft. east of monument, June 3, 2005.**