

MONUMENT 165

CERTIFICATE OF LOCATION OF GOVERNMENT CORNER
 Northeast Corner of Section 19, Township 30 North, Range
 22 West, County of Ramsey, State of Minnesota.

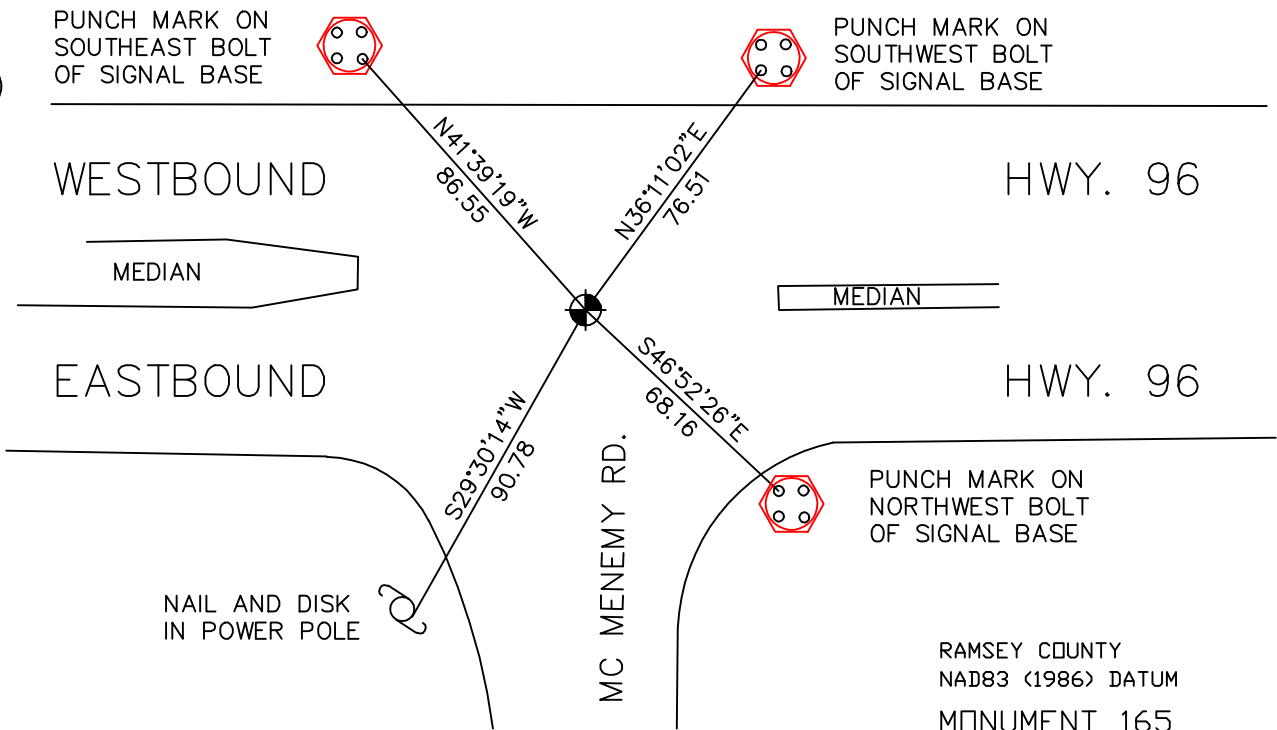
At the corner location shown on the sketch

On February 15, 2005 found a cast iron monument within a cast iron
manhole assembly.

left monument as found, lowered monument, removed monument (explain)

On _____ placed a _____

SKETCH OF REFERENCE TIES



ALL DISTANCES ARE SHOWN IN U.S. SURVEY FEET.
 BEARINGS ARE FOR TIE REFERENCE PURPOSES ONLY.

Statements of evidence relative to this corner are on the following page(s).

I hereby certify that this document and the data
 contained herein was prepared by me or under
 my direct supervision this _____ day
 of _____, 20____.

SIGNATURE

Minnesota License No. _____

- Land Surveyor Professional Engineer
 County Surveyor County Engineer

OFFICE OF COUNTY SURVEYOR

County of Ramsey

I hereby certify that this document was filed in
 the County Surveyor's office on the ____ day
 of _____, 20____.

David D. Claypool, P.L.S., County Surveyor

By _____, Deputy

MONUMENT 165

Found granite monument down +/- 4 in.; set short cast iron monument (4⁵/₈ in.) on top, May 26, 1976.

Tied monument, June 14, 1990.

Tied and removed monument for construction, May 16, 1997.

Set 20 in. cast iron monument down 18 in. from finished grade, August 26, 1998.

12 in. manhole assembly set by contractor, August 31, 1998.

Retied monument, December 4, 1998.

Retied monument, February 15, 2005.