

MONUMENT 15SC

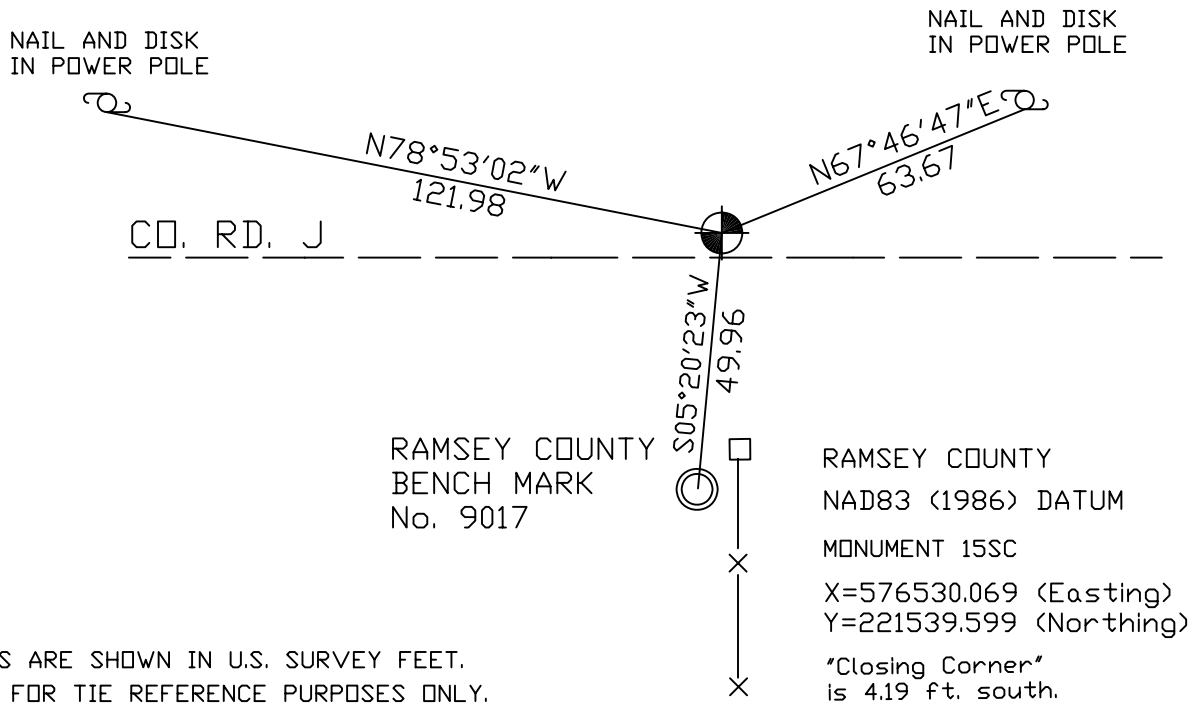
CERTIFICATE OF LOCATION OF GOVERNMENT CORNER

Northeast Corner of Section 6, Township 30 North, Range 22 West,
County of Ramsey, State of Minnesota.

At the corner location shown on the sketch

- On October 11, 2005 found a cast iron monument marked "3RD CORRECTION LINE" (2638.04 ft. east of monument 14SC).
- left monument as found, lowered monument, removed monument (explain)
- On _____ placed a _____

SKETCH OF REFERENCE TIES



Statements of evidence relative to this corner are on the following page(s).

I hereby certify that this document and the data contained herein was prepared by me or under my direct supervision this _____ day of _____, 20____.

SIGNATURE

- Minnesota License No. _____
- Land Surveyor Professional Engineer
- County Surveyor County Engineer

OFFICE OF COUNTY SURVEYOR

County of Ramsey

I hereby certify that this document was filed in the County Surveyor's office on the _____ day of _____, 20____.

David D. Claypool, P.L.S., County Surveyor

By _____, Deputy

MONUMENT 15SC

Found granite monument tipped, down 0.3 ft. Also found 2 P.K. nails and a nail and disk; none of them located over tipped granite (all were east of the tipped granite monument, did not tie out). Dug out granite and uprighted, but monument does not fit ties. Uprighting the granite monument moved the top of the monument to the east, May 15 and 16, 1974.

Placed a cast iron cap, July 25, 1975.

Retied monument, March 22, 1976.

Tied monument for road construction, April, 1990.

Removed a cast iron cap, May, 1990.

Placed a 20 in. cast iron monument, September 5, 1990.

Retied monument, January 27, 1993.

Set a 20 in. cast iron standard corner (SC) monument marked, "3RD CORRECTION LINE", 4.19 ft. north of "Closing Corner" (original granite monument location), July 27, 1995.

Tied monument 15SC, August 25, 1998.

Retied monument, October 11, 2005.