

# MONUMENT 158

## CERTIFICATE OF LOCATION OF GOVERNMENT CORNER

North Quarter Corner of Section 22, Township 30 North, Range 23 West,  
County of Ramsey, State of Minnesota.

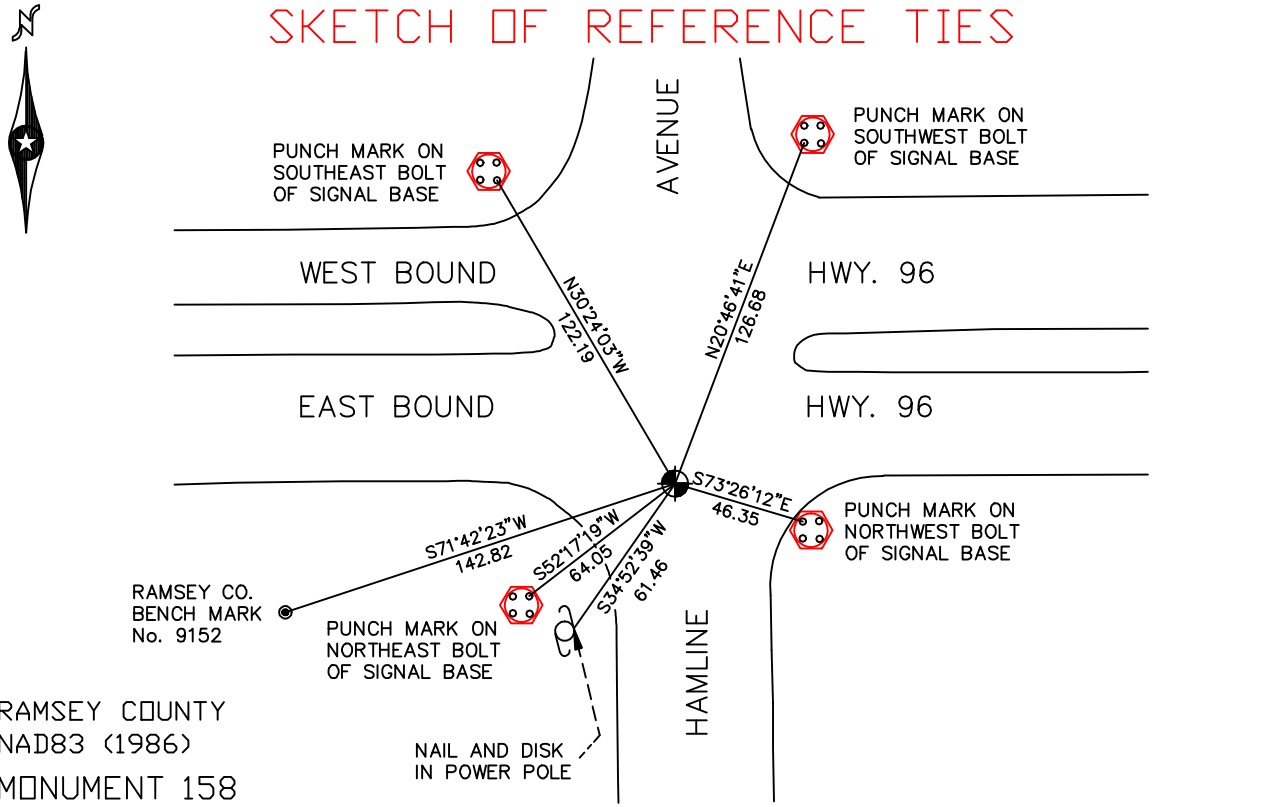
At the corner location shown on the sketch

On March 15, 2005 found a cast iron monument within a cast iron manhole assembly.

left monument as found     lowered monument     removed monument (explain)

On \_\_\_\_\_ placed a \_\_\_\_\_

### SKETCH OF REFERENCE TIES



RAMSEY COUNTY  
NAD83 (1986)  
MONUMENT 158

X= 558324.419 (Easting)  
Y= 205094.302 (Northing)

ALL DISTANCES ARE SHOWN IN U.S. SURVEY FEET.  
BEARINGS ARE FOR TIE REFERENCE PURPOSES ONLY.

Statements of evidence relative to this corner are on the following page(s).

I hereby certify that this document and the data contained herein was prepared by me or under my direct supervision this \_\_\_\_\_ day of \_\_\_\_\_, 20\_\_\_\_.

SIGNATURE

Minnesota License No. \_\_\_\_\_

County Surveyor     Land Surveyor

#### OFFICE OF COUNTY SURVEYOR

County of Ramsey

I hereby certify that this document was filed in the County Surveyor's office on the \_\_\_\_ day of \_\_\_\_\_, 20\_\_\_\_.

David D. Claypool, P.L.S., County Surveyor

By \_\_\_\_\_, Deputy

## MONUMENT 158

**Found granite down 0.4 ft., May 31, 1974.**

**Placed cast iron cap and bolt monument, June 13, 1974.**

**Retied monument, June 26, 1975.**

**Retied monument, flush, January 22, 1992.**

**Monument cap loose; removed, replaced and re-cemented, June 8, 2000.**

**Monument removed for construction, no date given in field book.**

**Set 20 in. cast iron monument down 18 in. from finished grade;  
within a cast iron manhole assembly, set by contractor, October 2, 2003.**

**Retied monument, March 15, 2005.**