

MONUMENT 157

CERTIFICATE OF LOCATION OF GOVERNMENT CORNER

Northwest Corner of Section 22, Township 30 North, Range 23 West, County of Ramsey, State of Minnesota.

At the corner location shown on the sketch

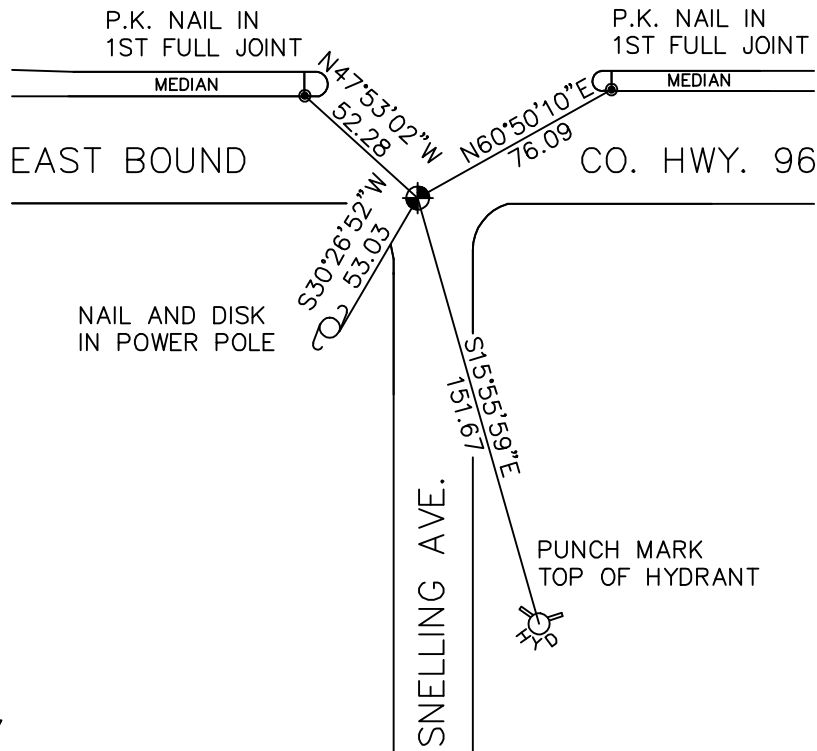
On February 15, 2005 found a cast iron monument within a cast iron manhole assembly.

left monument as found lowered monument removed monument (explain)

On _____ placed a _____



SKETCH OF REFERENCE TIES



RAMSEY COUNTY
NAD83 (1986)
MONUMENT 157

X= 555672.627 (Easting)
Y= 205085.678 (Northing)

ALL DISTANCES ARE SHOWN IN U.S. SURVEY FEET.
BEARINGS ARE FOR TIE REFERENCE PURPOSES ONLY.

Statements of evidence relative to this corner are on the following page(s).

I hereby certify that this document and the data contained herein was prepared by me or under my direct supervision this _____ day of _____, 20____.

SIGNATURE

Minnesota License No. _____

County Surveyor Land Surveyor

OFFICE OF COUNTY SURVEYOR

County of Ramsey

I hereby certify that this document was filed in the County Surveyor's office on the ____ day of _____, 20____.

David D. Claypool, P.L.S., County Surveyor

By _____, Deputy

MONUMENT 157

Found lag bolt on surface; granite monument down 0.35 ft.; placed P.K. nails 2 ft. away in each quadrant, May 31, 1974.

Placed cast iron cap and bolt monument over granite, June 13, 1974.

Retied monument, June 20, 1974.

Monument has been disturbed. Dug down to granite; appears to be leaning, November 5, 1986.

Placed short cast iron monument (4 in. long Harrison) in relocated position and cemented in place, June 9, 1988.

Retied monument, January 14, 1992.

Monument removed for construction, no date given in field book.

Set 20 in. cast iron monument down 18 in. from finished grade; 12 in. cast iron manhole assembly set by contractor, October 3, 2003.

Retied monument, February 15, 2005.