

MONUMENT 155

CERTIFICATE OF LOCATION OF GOVERNMENT CORNER
 Southwest Corner of Section 16, Township 30 North, Range 23 West, County of Ramsey, State of Minnesota.

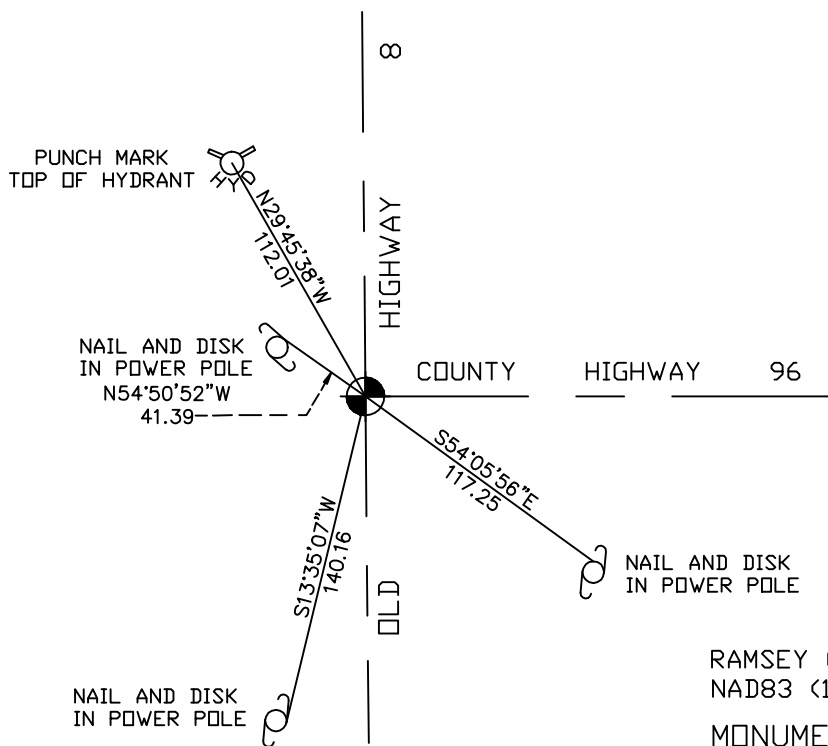
At the corner location shown on the sketch

On February 15, 2005 found a cast iron monument within a cast iron
manhole assembly.

left monument as found, lowered monument, removed monument (explain)

On _____ placed a _____

SKETCH OF REFERENCE TIES



RAMSEY COUNTY
 NAD83 (1986) DATUM
 MONUMENT 155
 X=550405.736 (Easting)
 Y=205052.135 (Northing)

ALL DISTANCES ARE SHOWN IN U.S. SURVEY FEET.
 BEARINGS ARE FOR TIE REFERENCE PURPOSES ONLY.

Statements of evidence relative to this corner are on the following page(s).

I hereby certify that this document and the data contained herein was prepared by me or under my direct supervision this _____ day of _____, 20____.

SIGNATURE

Minnesota License No. _____
 Land Surveyor Professional Engineer
 County Surveyor County Engineer

OFFICE OF COUNTY SURVEYOR

County of Ramsey

I hereby certify that this document was filed in the County Surveyor's office on the ____ day of _____, 20____.

David D. Claypool, P.L.S., County Surveyor

By _____, Deputy

MONUMENT 155

Found granite monument down 0.16 ft., August 21, 1974.

Set cast iron cap monument, May 17, 1976.

20 in. cast iron monument set after reconstruction of road by County Highway Department.

Tied monument, June 13, 1990.

Retied monument; top missing, July 13, 1998.

Removed cast iron monument; set 20 in. cast iron monument and cast iron manhole assembly, July 21, 1998.

Retied monument, February 15, 2005.