

# MONUMENT 152

## CERTIFICATE OF LOCATION OF GOVERNMENT CORNER

South Quarter Corner of Section 18, Township 30 North, Range 23 West,  
County of Ramsey, State of Minnesota.

At the corner location shown on the sketch

On May 3, 2005 found a cast iron monument.

left monument as found     lowered monument     removed monument (explain)

On \_\_\_\_\_ placed a \_\_\_\_\_

### SKETCH OF REFERENCE TIES



PUNCH MARK ON  
SOUTHWEST CORNER  
OF LIGHT POLE BASE

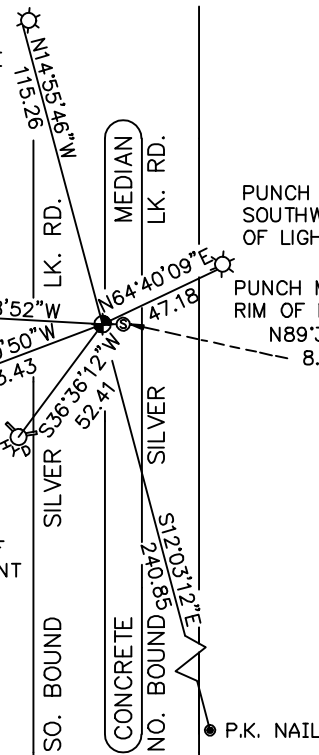
PUNCH MARK ON  
SOUTHWEST CORNER  
OF LIGHT POLE BASE

PUNCH MARK ON EAST  
RIM OF MANHOLE  
N89°37'00"E  
8.50

HOUSE  
No. 1804  
SOUTHEAST  
CORNER  
UP 1 FT.

HOUSE  
No. 1796  
NORTHEAST  
CORNER  
TOP BRICK

PUNCH  
MARK  
TOP OF  
HYDRANT



RAMSEY COUNTY  
NAD83 (1986)

MONUMENT 152

X= 542477.332 (Easting)  
Y= 204971.847 (Northing)

ALL DISTANCES ARE SHOWN IN U.S. SURVEY FEET.  
BEARINGS ARE FOR TIE REFERENCE PURPOSES ONLY.

Statements of evidence relative to this corner are on the following page(s).

I hereby certify that this document and the data  
contained herein was prepared by me or under  
my direct supervision this \_\_\_\_\_ day  
of \_\_\_\_\_, 20\_\_\_\_.

SIGNATURE

Minnesota License No. \_\_\_\_\_

County Surveyor     Land Surveyor

OFFICE OF COUNTY SURVEYOR

County of Ramsey

I hereby certify that this document was filed in  
the County Surveyor's office on the \_\_\_\_ day  
of \_\_\_\_\_, 20\_\_\_\_.

David D. Claypool, P.L.S., County Surveyor

By \_\_\_\_\_, Deputy

## MONUMENT 152

**Found cast iron monument flush and retied, August 21, 1974.**

**Found monument broken off, August 1, 1985.**

**Tied monument for reconstruction of road, May 6, 2002.**

**Removed monument, May 8, 2003.**

**Placed  $\frac{5}{8}$  in. rebar and cap temporarily until monument could be installed, November 10, 2004.**

**Cored an 8 in. hole in curb edge and bituminous and placed cast iron monument in concrete slightly below road grade, April 28, 2005.**

**Retied monument, May 3, 2005.**