

# MONUMENT 151

## CERTIFICATE OF LOCATION OF GOVERNMENT CORNER

Southwest Corner of Section 18, Township 30 North, Range 23 West, County of Ramsey, State of Minnesota.

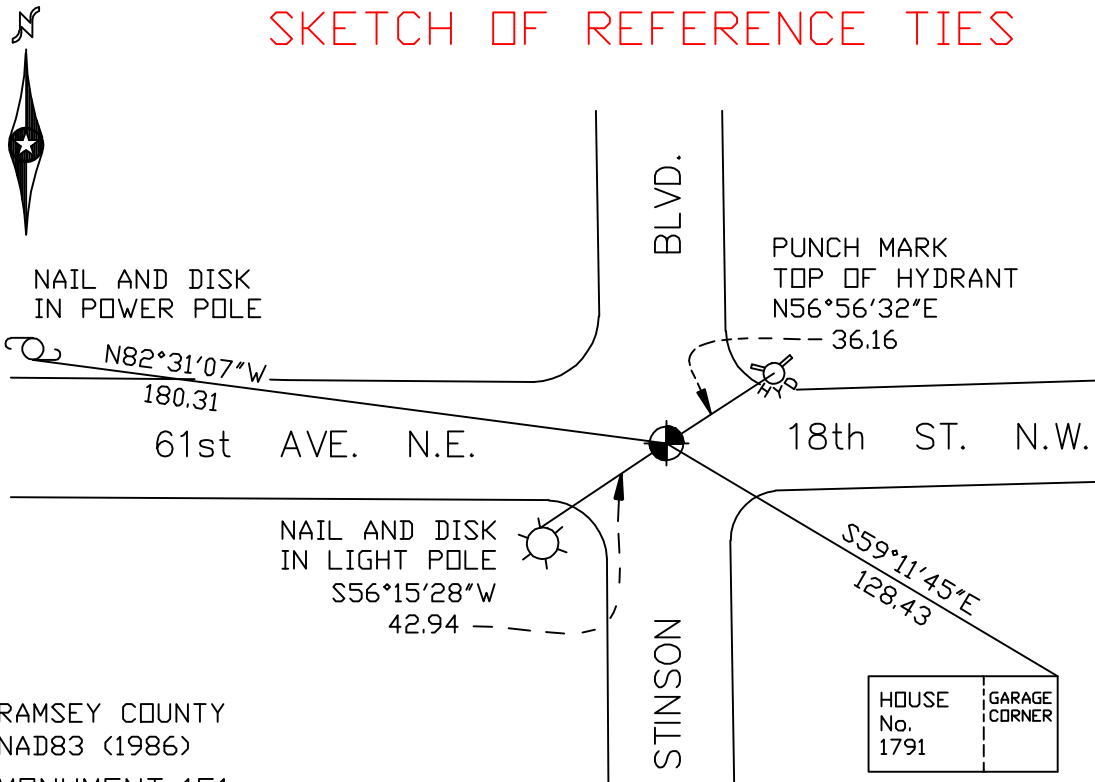
At the corner location shown on the sketch

On March 1, 2005 found a cast iron monument within a cast iron manhole assembly.

left monument as found     lowered monument     removed monument (explain)

On \_\_\_\_\_ placed a \_\_\_\_\_

## SKETCH OF REFERENCE TIES



RAMSEY COUNTY  
NAD83 (1986)  
MONUMENT 151

X= 540258.743 (Easting)  
Y= 204908.738 (Northing)

ALL DISTANCES ARE SHOWN IN U.S. SURVEY FEET.  
BEARINGS ARE FOR TIE REFERENCE PURPOSES ONLY.

Statements of evidence relative to this corner are on the following page(s).

I hereby certify that this document and the data contained herein was prepared by me or under my direct supervision this \_\_\_\_\_ day of \_\_\_\_\_, 20\_\_\_\_.

SIGNATURE

Minnesota License No. \_\_\_\_\_

County Surveyor     Land Surveyor

### OFFICE OF COUNTY SURVEYOR

County of Ramsey

I hereby certify that this document was filed in the County Surveyor's office on the \_\_\_\_ day of \_\_\_\_\_, 20\_\_\_\_.

David D. Claypool, P.L.S., County Surveyor

By \_\_\_\_\_, Deputy

## MONUMENT 151

**Found a cast iron monument flush and retied, August 21, 1974.**

**Retied monument, January 14, 1992.**

**Retied monument, September 8, 1999.**

**Removed monument for City of New Brighton storm sewer project,  
June 16, 2000.**

**Set a 20 in. cast iron monument down +/-18 in. within a cast iron manhole  
assembly, July 5, 2001.**

**Retied monument, March 1, 2005.**