

MONUMENT 140

CERTIFICATE OF LOCATION OF GOVERNMENT CORNER

East Quarter Corner of Section 18, Township 30 North, Range 22 West,
County of Ramsey, State of Minnesota.

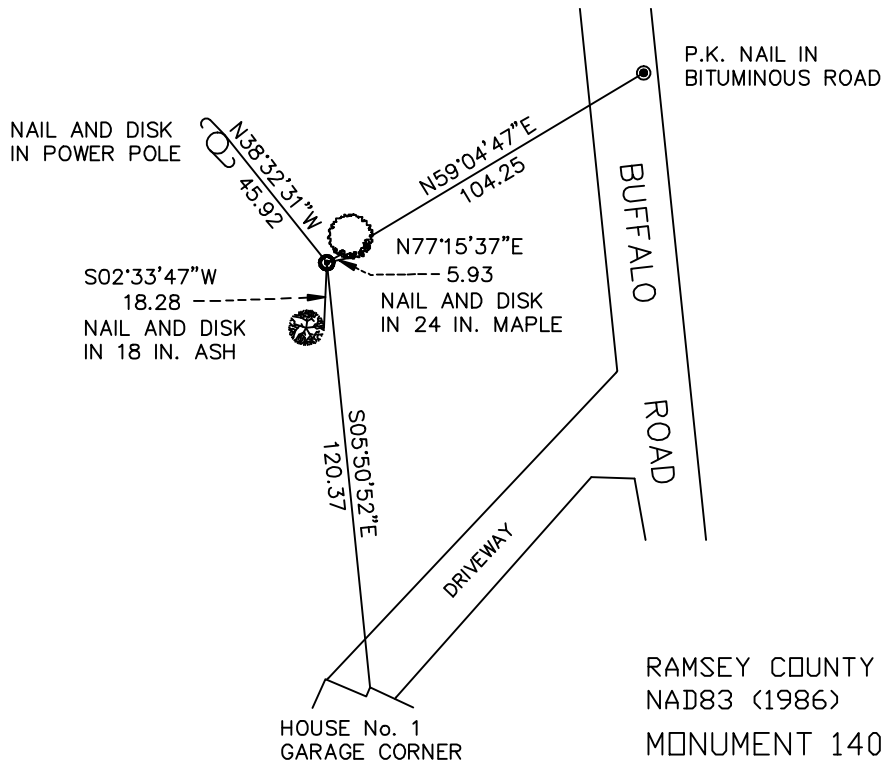
At the corner location shown on the sketch

On February 25, 2005 found a 3/4 in. iron pipe in concrete and pipe.

left monument as found lowered monument removed monument (explain)

On _____ placed a _____

SKETCH OF REFERENCE TIES



RAMSEY COUNTY
NAD83 (1986)

MONUMENT 140

ALL DISTANCES ARE SHOWN IN U.S. SURVEY FEET.
BEARINGS ARE FOR TIE REFERENCE PURPOSES ONLY.

X = 576583.965 (Easting)
Y = 207822.290 (Northing)

Statements of evidence relative to this corner are on the following page(s).

I hereby certify that this document and the data contained herein was prepared by me or under my direct supervision this _____ day of _____, 20____.

SIGNATURE

Minnesota License No. _____

County Surveyor Land Surveyor

OFFICE OF COUNTY SURVEYOR

County of Ramsey

I hereby certify that this document was filed in the County Surveyor's office on the ____ day of _____, 20____.

David D. Claypool, P.L.S., County Surveyor

By _____, Deputy

MONUMENT 140

Found 3/4 in. iron pipe in concrete and pipe up +/- 0.2 ft., set by M.W. Carley and Associates, March 1, 1988.

Tied monument, May 4, 1990.

Retied monument and set sign and post, November 30, 2001.

Retied monument, February 25, 2005.