

# MONUMENT 131

## CERTIFICATE OF LOCATION OF GOVERNMENT CORNER

Center of Section 16, Township 30 North, Range 23 West, County of Ramsey, State of Minnesota.

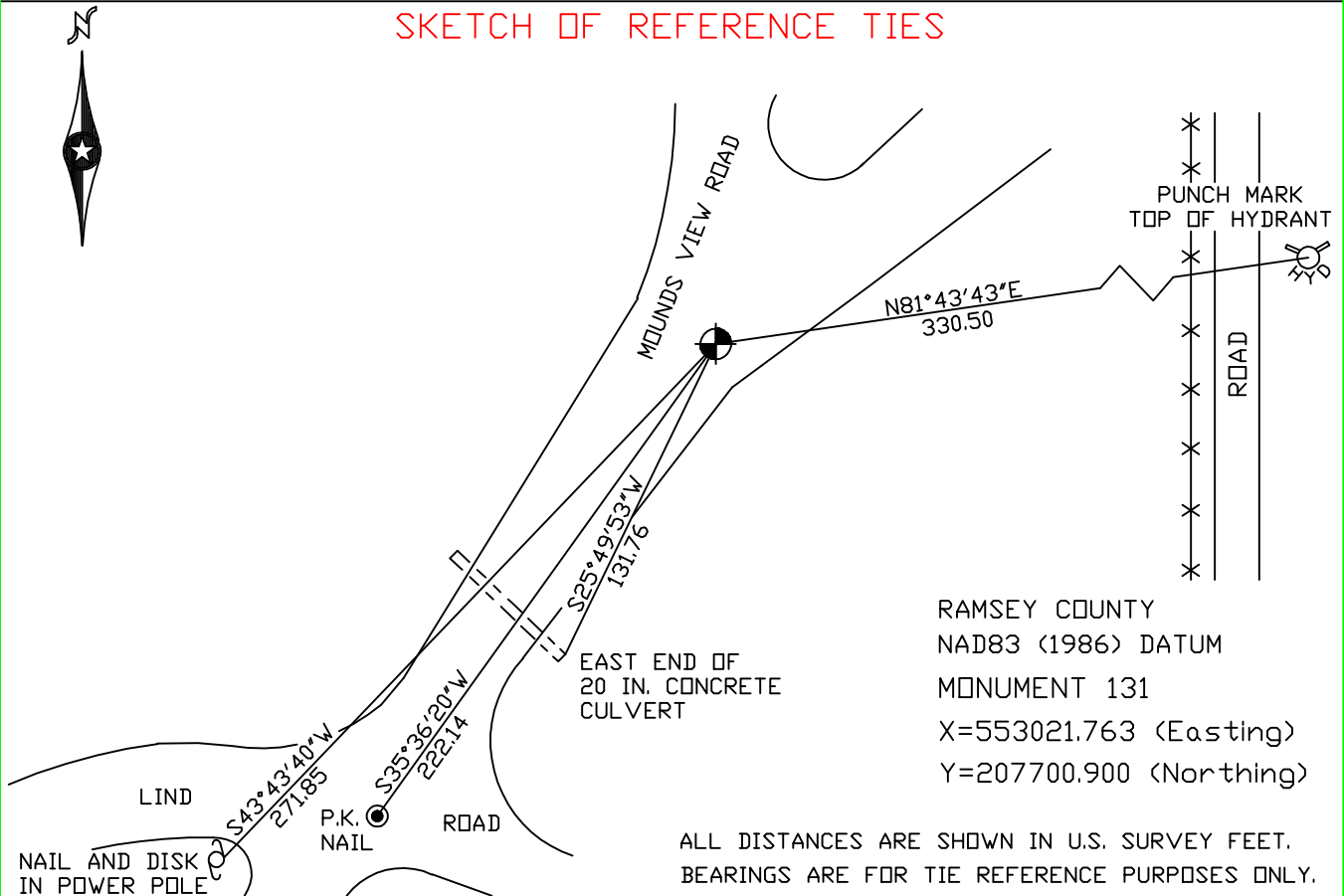
At the corner location shown on the sketch

On March 9, 2005 found a cast iron monument.

left monument as found,  lowered monument,  removed monument (explain)

On \_\_\_\_\_ placed a \_\_\_\_\_

### SKETCH OF REFERENCE TIES



Statements of evidence relative to this corner are on the following page(s).

I hereby certify that this document and the data contained herein was prepared by me or under my direct supervision this \_\_\_\_\_ day of \_\_\_\_\_, 20\_\_\_\_.

SIGNATURE \_\_\_\_\_

Minnesota License No. \_\_\_\_\_

Land Surveyor     Professional Engineer

County Surveyor     County Engineer

#### OFFICE OF COUNTY SURVEYOR

County of Ramsey

I hereby certify that this document was filed in the County Surveyor's office on the \_\_\_\_ day of \_\_\_\_\_, 20\_\_\_\_.

David D. Claypool, P.L.S., County Surveyor

By \_\_\_\_\_, Deputy

## **MONUMENT 131**

**Looked and found nothing. Old road plan of 1941 (Arsenal) showed a cut of +/-5 ft., July 26, 1991.**

**Computed position using the coordinates of the four exterior quarter section corners. Placed cast iron monument at computed corner location, October 21, 1991.**

**Tied out monument, October 23, 1991.**

**Retied monument, April 3, 2001.**

**Retied monument, March 9, 2005.**