

MONUMENT 106

CERTIFICATE OF LOCATION OF GOVERNMENT CORNER

North Quarter Corner of Section 16, Township 30 North, Range 23 West,
County of Ramsey, State of Minnesota.

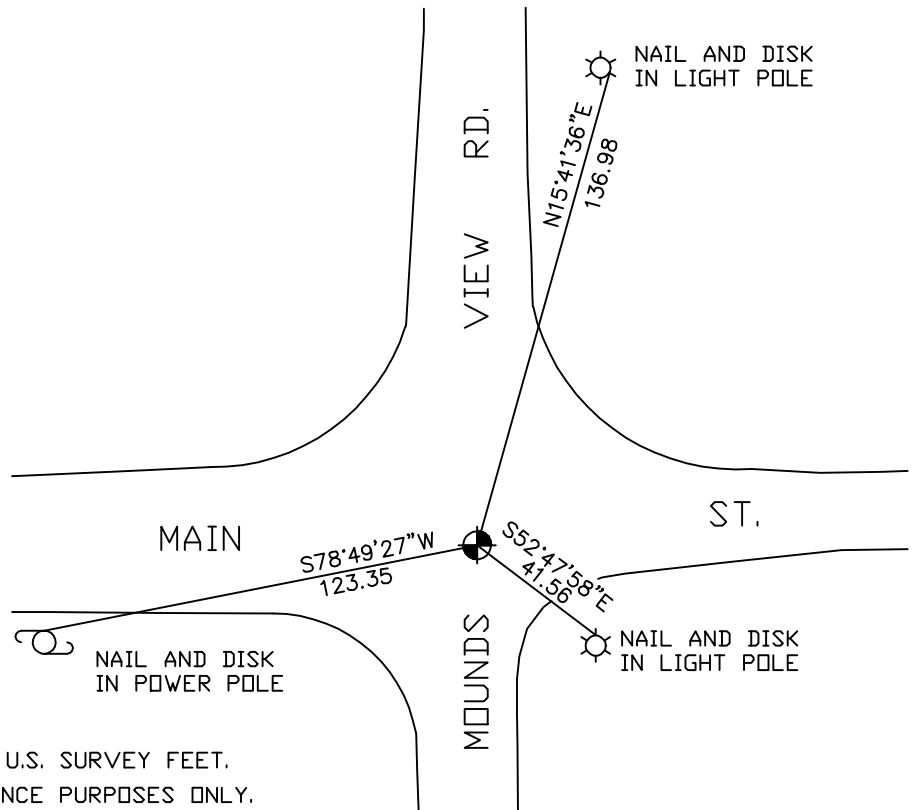
At the corner location shown on the sketch

On March 9, 2005 found cast iron monument.

left monument as found, lowered monument, removed monument (explain)

On _____ placed a _____

SKETCH OF REFERENCE TIES



RAMSEY COUNTY
NAD83 (1986) DATUM
MONUMENT 106
X=552993.129 (Easting)
Y=210339.829 (Northing)

ALL DISTANCES ARE SHOWN IN U.S. SURVEY FEET.
BEARINGS ARE FOR TIE REFERENCE PURPOSES ONLY.

Statements of evidence relative to this corner are on the following page(s).

I hereby certify that this document and the data contained herein was prepared by me or under my direct supervision this _____ day of _____, 20____.

SIGNATURE

Minnesota License No. _____
 Land Surveyor Professional Engineer
 County Surveyor County Engineer

OFFICE OF COUNTY SURVEYOR

County of Ramsey

I hereby certify that this document was filed in the County Surveyor's office on the ____ day of _____, 20____.

David D. Claypool, P.L.S., County Surveyor

By _____, Deputy

MONUMENT 106

Found $\frac{3}{4}$ in. x 24 in. long rod inside a 1 in. x 12 in. long pipe. Dug down 2.3 ft., encountered $1\frac{1}{2}$ in. to 2 in. gravel all the way. Placed a 20 in. cast iron monument flush and tied, August 21, 1991.

Retied monument, April 3, 2001.

Retied monument, March 9, 2005.