

MONUMENT 104

CERTIFICATE OF LOCATION OF GOVERNMENT CORNER

South Quarter Corner of Section 8, Township 30 North, Range 23 West, County of Ramsey, State of Minnesota.

At the corner location shown on the sketch

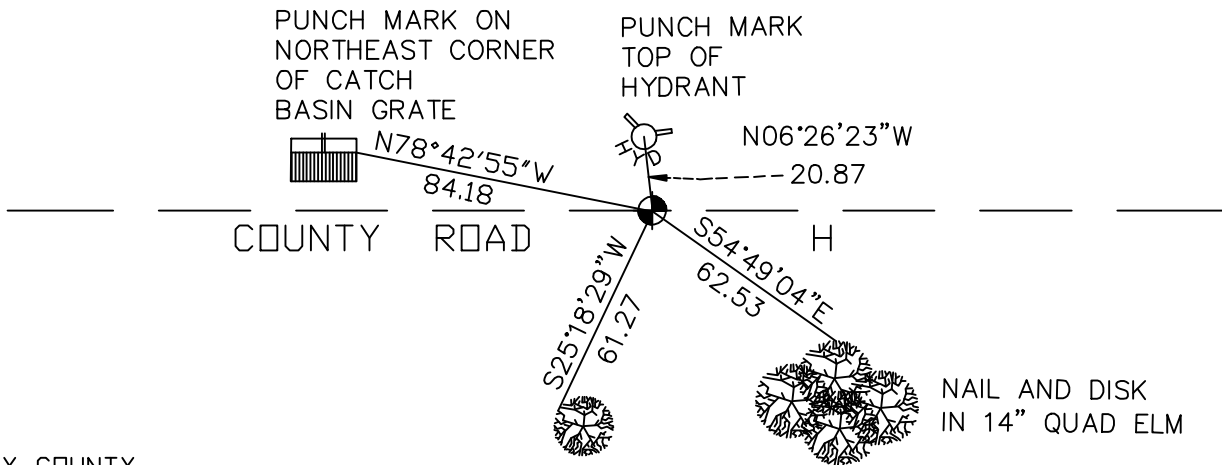
On March 8, 2005 found a cast iron monument.

left monument as found, lowered monument, removed monument (explain)

On _____ placed a _____



SKETCH OF REFERENCE TIES



RAMSEY COUNTY
NAD83 (1986) DATUM
MONUMENT 104

X=547727.672 (Easting)
Y=210339.681 (Northing)

NAIL AND DISK
IN 12" ELM

ALL DISTANCES ARE SHOWN IN U.S. SURVEY FEET.
BEARINGS ARE FOR TIE REFERENCE PURPOSES ONLY.

Statements of evidence relative to this corner are on the following page(s).

I hereby certify that this document and the data contained herein was prepared by me or under my direct supervision this _____ day of _____, 20 ____.

SIGNATURE

Minnesota License No. _____

- Land Surveyor Professional Engineer
 County Surveyor County Engineer

OFFICE OF COUNTY SURVEYOR

County of Ramsey

I hereby certify that this document was filed in the County Surveyor's office on the ____ day of _____, 20 ____.

David D. Claypool, P.L.S., County Surveyor

By _____, Deputy

MONUMENT 104

Found cast iron monument flush and retied, August 19, 1974.

Retied monument, January 14, 1992.

Retied monument, October 13, 2000.

Retied monument, March 8, 2005.