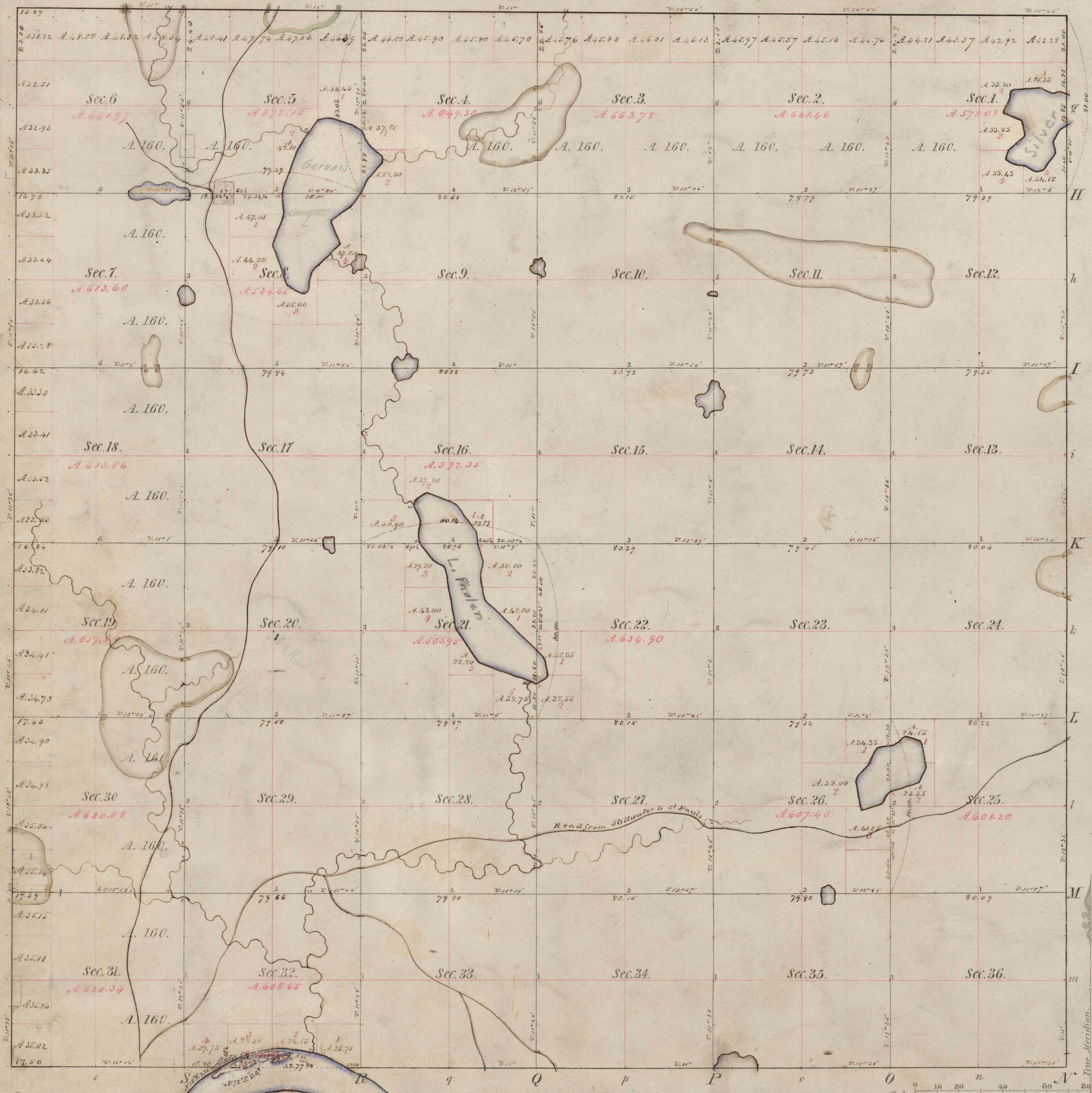


Township N^o 29 N, Range N^o 22 West 4th Mer.



Posts	Courses	Ch. Lk.	Posts	Courses	Ch. Lk.	Posts	Courses	Ch. Lk.
Left bank up stream								
	S. 47° 54'	4.26						
	S. 60° 11'	11.00		S. 47° 11'	31.00			
	S. 79° 11'	11.00		S. 15° 11'	10.00			
	West	10.00		S. 2° 11'	4.00			
	S. 92° 11'	5.00		S. 16° 11'	5.00			
	S. 77° 11'	7.50		S. 15° 11'	9.50			
	S. 67° 11'	9.00						
	S. 61° 11'	5.09						
Lake in section 4, 5 & 8								
	S. 24° 11'	5.00						
	S. 40° 11'	12.00						
	S. 85° 11'	6.00		S. 35° 11'	8.50			
	S. 94° 11'	7.50		S. 40° 11'	10.00			
	S. 40° 11'	7.50		S. 20° 11'	5.50			
	S. 19° 11'	3.50						
	S. 10° 11'	13.50		S. 61° 11'	6.50			
	S. 75° 11'	10.00		S. 74° 11'	10.00			
	S. 34° 11'	6.42		S. 79° 11'	5.00			
				S. 33° 11'	17.00			
	S. 71° 11'	13.50		S. 11° 11'	20.50			
	S. 26° 11'	8.00						
	S. 11° 11'	11.50		S. 35° 11'	10.00			
	S. 70° 11'	7.00		S. 19° 11'	15.00			
	S. 57° 11'	5.50		S. 20° 11'	7.00			
	S. 67° 11'	3.74		S. 16° 11'	13.00			
				S. 72° 11'	7.50			
Lake in section 1								
	S. 27° 11'	3.00						
	S. 18° 11'	9.00						
	S. 65° 11'	2.50						
	S. 70° 11'	4.50		S. 31° 11'	11.50			
	S. 60° 11'	7.50		S. 55° 11'	11.50			
	S. 85° 11'	12.34		S. 33° 11'	7.50			
	S. 15° 11'	4.00						
	S. 22° 11'	6.50						
	S. 65° 11'	9.50						
	S. 17° 11'	6.00						
	S. 68° 11'	10.00						
	S. 25° 11'	4.50						
	S. 57° 11'	4.00						
	S. 17° 11'	5.00						
	S. 95° 11'	6.50						
	S. 57° 11'	3.51						
Meanders of Island in section 32								
	S. 73° 11'	4.20						
	S. 64° 11'	6.00		S. 15° 11'	4.00			
	S. 74° 11'	4.00		S. 74° 11'	3.70			
	S. 35° 11'	9.50		S. 38° 46'	2.02			
	S. 11° 11'	5.00		S. 27° 30'	1.50			
	S. 95° 11'	6.50		S. 61° 30'	2.60			
	S. 57° 11'	3.51		S. 34° 30'	1.11			
Meanders of Mill Island in section 32								
	S. 75° 11'	4.00						
	S. 66° 11'	17.50		S. 70° 11'	3.50			
	S. 67° 11'	12.00		S. 33° 11'	4.20			
	S. 70° 11'	5.00		S. 60° 11'	3.50			
	S. 75° 11'	3.00		S. 77° 11'	5.70			
	S. 5° 11'	2.00		S. 46° 11'	1.60			
	S. 60° 11'	6.50						
	S. 5° 11'	7.50						
	S. 10° 11'	3.24						
Meanders of Island in section 32								
	S. 79° 11'	7.44						
	S. 63° 11'	7.42						
	S. 10° 11'	29.50		S. 84° 11'	7.40			
	S. 74° 11'	19.00		S. 81° 11'	7.82			
	S. 70° 11'	28.09		S. 82° 11'	7.40			
	S. 57° 11'	6.00		S. 76° 11'	4.16			
	S. 15° 11'	9.50		S. 70° 11'	2.22			
				S. 15° 11'	1.30			

The plan of section 32 is correct as shown on the map, and is a correct representation of the same. The field notes of which have been examined & approved. Surveyor General's Office, Dubuque, September 7, 1852. George B. DeLong, Surveyor General.

The island in section 32 is a correct representation of the same, and is a correct representation of the same. The field notes of which have been examined & approved. Surveyor General's Office, Dubuque, September 7, 1852. George B. DeLong, Surveyor General.

Total number of Acres. 353 36.4

Surveys Designated	By Whom Surveyed	Date of Contract	Amount of Survey	When Surveyed	When p ^d for and ch ^d in the Sur. Gen ^l acc ^t
Township lines	James M. Beach	May 22 ^d 1847	M. Ch ^s Lks. 78 19	October 1847	
Subdivisions	James M. Beach	September 3 ^d 1847	68 70 12	December 1847	

The above Map of Township N^o 29 North of Range N^o 22 West of the 4th Principal Meridian Wisconsin Territory is strictly conformable to the field notes of the survey thereof on file in this Office, which have been examined and approved.

Surveyor General's Office,
Dubuque, March 10th 1853.

Geo. W. Jones
Sur. Gen^l

