

SEC 8 T30N R22W

Found iron monument in place at SE corner.

For establishment of NE cor. and N $\frac{1}{2}$ cor. see SEC 5 T30N R22W

For establishment of NW cor. see SEC 6 T30N R22W.

For establishment of SW cor. and W $\frac{1}{2}$ cor. see SEC 7 T30N R22W

For establishment of MC# 7 and MC #8 see SEC 7 T30N R22W

In establishing S $\frac{1}{2}$ cor. Government witness trees gone.

Set corner by single proportionment between SE cor. and SW cor. 10 Feb. 1950.

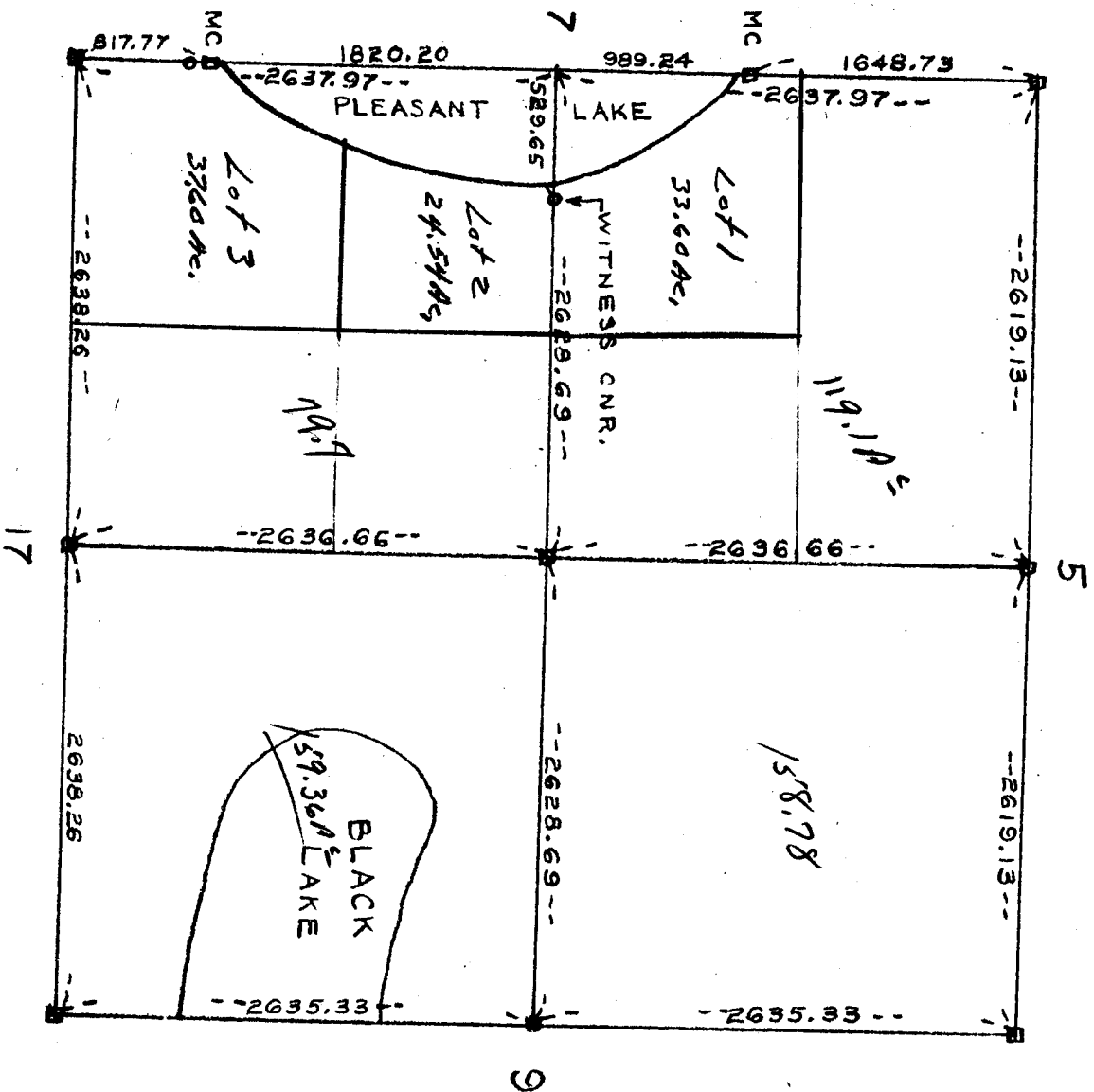
In establishing E $\frac{1}{2}$ cor. Government witness trees gone.

Set corner by single proportionment between NE cor. and SE cor. 25 Feb 1950.

Established center of Sec. 8 by intersection 28 Feb. 1950.

Established witness corner ANDER $\frac{1}{2}$ line Sec. 8 at shore of Pleasant Lake as shown on map 24 Feb. 1950.

NOTE: W $\frac{1}{2}$ cor. Sec. 8 established on ice.



SEC 8 T30N R22W