

SEC 7 T30N R22W

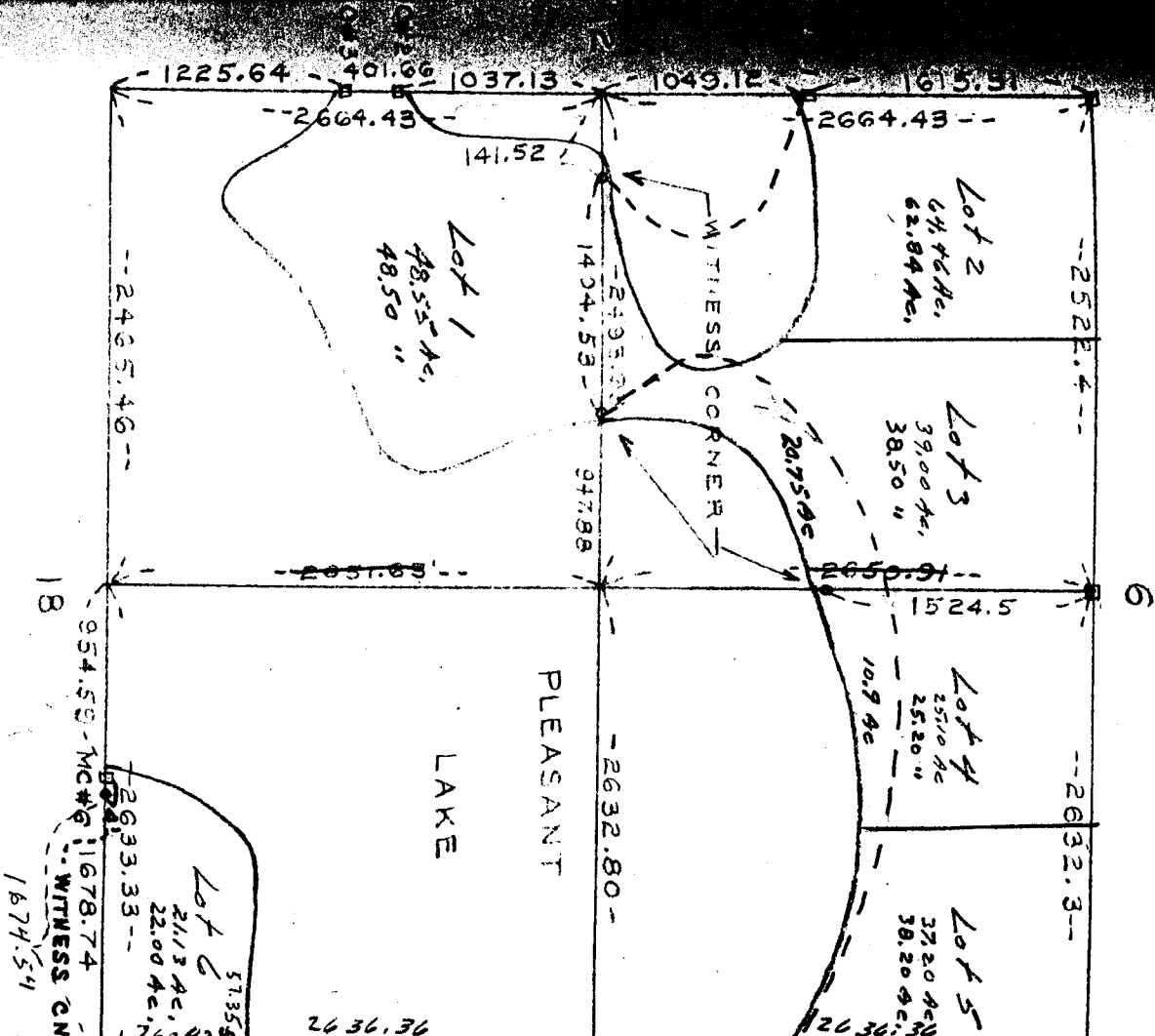
For establishment of NW cor., W $\frac{1}{2}$ cor., SW cor., MC #1; MC #2 and MC #3, see SEC 12 T30N R23W.

For establishment of N $\frac{1}{2}$ cor. and NE cor. see SEC 6 T30N R22W. Established SE cor. Sec. 7 by double proportionment. Government witness trees gone. Measured FW between SE cor. Sec. 8 and SW cor. Sec. 7; and NS between SE cor. Sec 18 and NE cor. Sec. 6, these being the nearest known monuments.

Set SE cor. Sec. 7 10 Feb 1950.

Established S $\frac{1}{4}$ cor. and MC # 6 by single proportionment between SE cor. Sec. 7 and SW cor. Sec. 7. 15 Feb 1950 Gov wit trees Established E $\frac{1}{4}$ cor., MC #7 and MC #8 by single proportionment between NE cor. and SE cor. Sec. 7 16 Feb 1950. Gov wit trees Established center of Sec. 7 by intersection on ice 21 Feb 1950. Established witness corners on EW $\frac{1}{2}$ line Sec. 7 where it intersects shore of island in Pleasant Lake, as shown on map 21 Feb 1950. Established witness corner on NS $\frac{1}{4}$ line where it intersects north shore of Pleasant Lake. 21 Feb 1950.

NOTE: W $\frac{1}{2}$ cor., SW cor., S $\frac{1}{4}$ cor., E $\frac{1}{4}$ cor., and Center of Sec. established on ice.



SEC 7 T30N R22W