

SEC 18 T30N R22W

Found granite monument in place at SW corner  
 " " " " S½ " "  
 " " " " SE " "

For establishment of W½ cor., NW cor., and MC # 5, see

SEC 13 T30N R22W.

For establishment NE cor., N½ cor. and MC #6 see SEC 17

T30N R22W.

Established E½ cor. halfway between SI cor. and NE cor.

of Sec. 18 10 Feb. 1950. Gov't. witness trees gone.

Established Center Sec. 18 by Intersection 12 Feb. 1950.

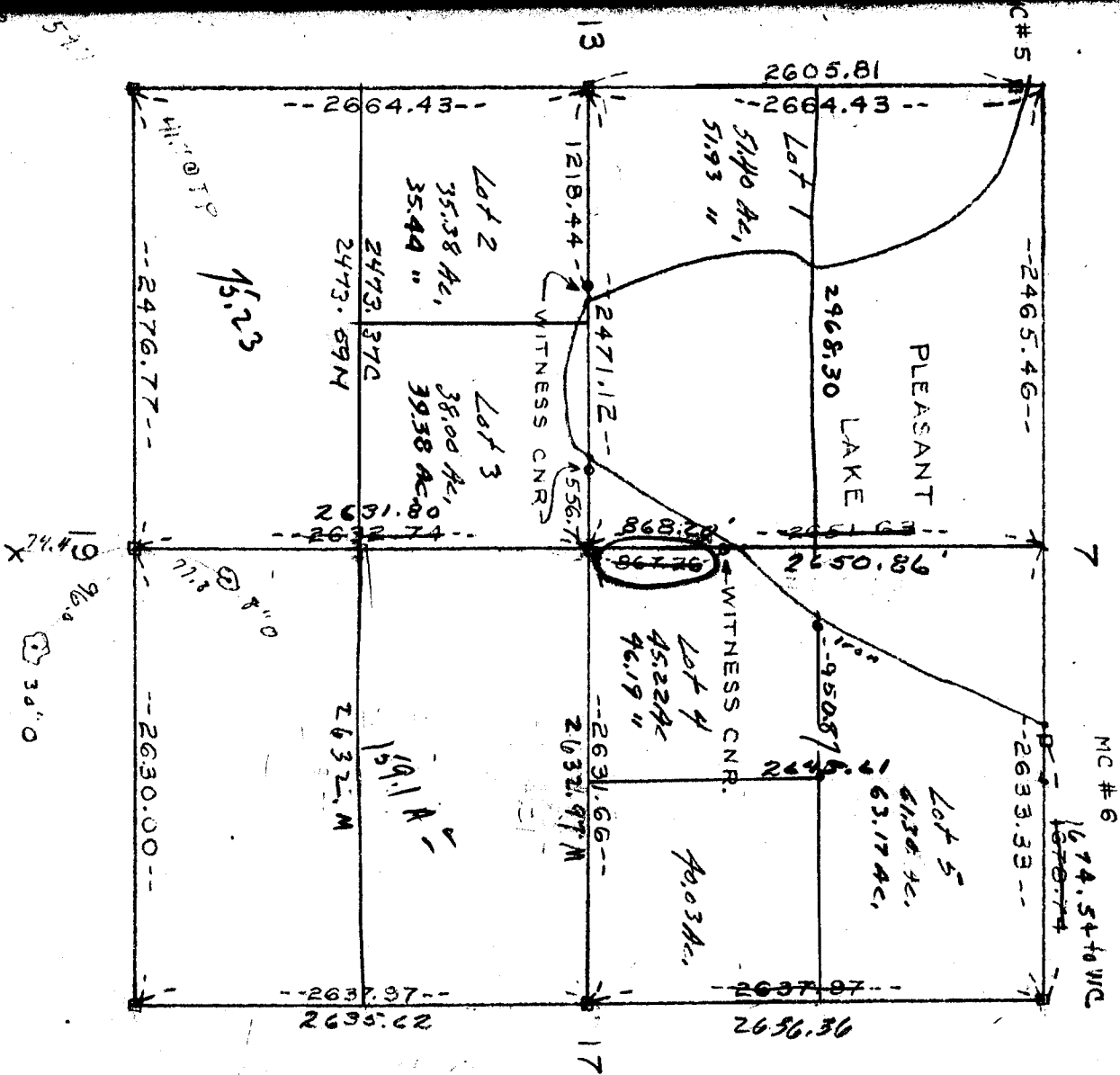
Established witness corners on FW½ line at its intersection

with the south shore of Pleasant Lake 12 Feb. 1950.

Established witness corner at intersection of NS½ line and

shore of Pleasant Lake as shown on map 12 Feb. 1950.

NOTE: EW cor., and N½ cor. established on loc.



SEC 18 T30N R22W