

SEC 17 T30N R22W

Found granite monument in place at SW corner.

" " " " S $\frac{1}{4}$ "

" " " " SE "

" " " " E $\frac{1}{4}$ "

" Iron " " NE "

For establishment of NW cor. see SEC 7 T30N R22W.

For establishment of E $\frac{1}{4}$ cor. see SEC 18 T30N R22W.

For establishment of N $\frac{1}{4}$ cor. see SEC 8 T30N R22W.

Established center of Sec. 17 on ice by intersection

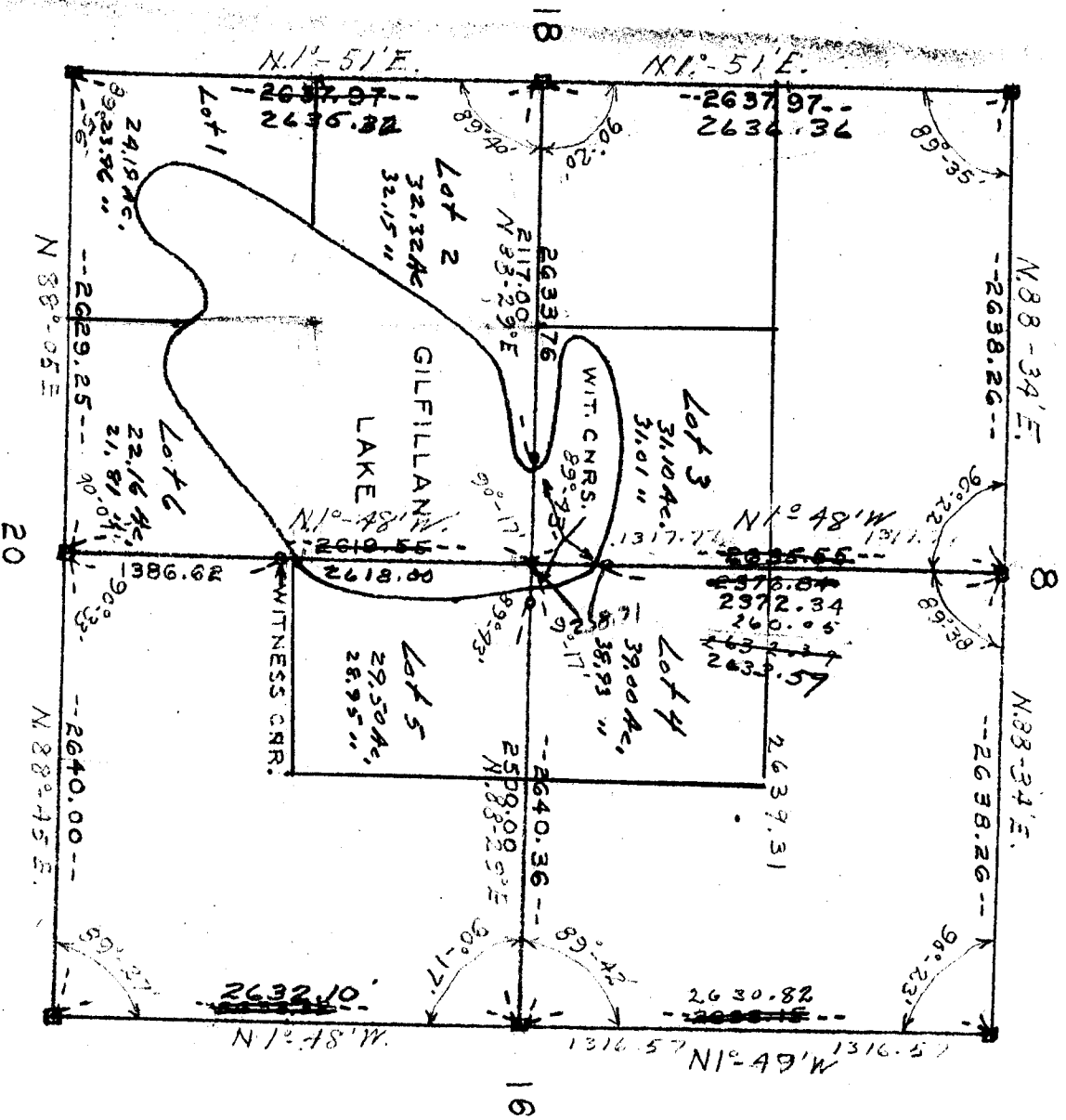
16 Feb. 1950.

Established witness corners on NS $\frac{1}{4}$ line Sec. 17 at shore

of Gilfillan Lake 16 Feb. 1950.

Established witness corners on EW $\frac{1}{4}$ line Sec. 17 at shore

of Gilfillan Lake 16 Feb. 1950.



SEC 17 T 30N R 22 W