

SIC 13 T30N R23W

Found granite monument in place at NW corner

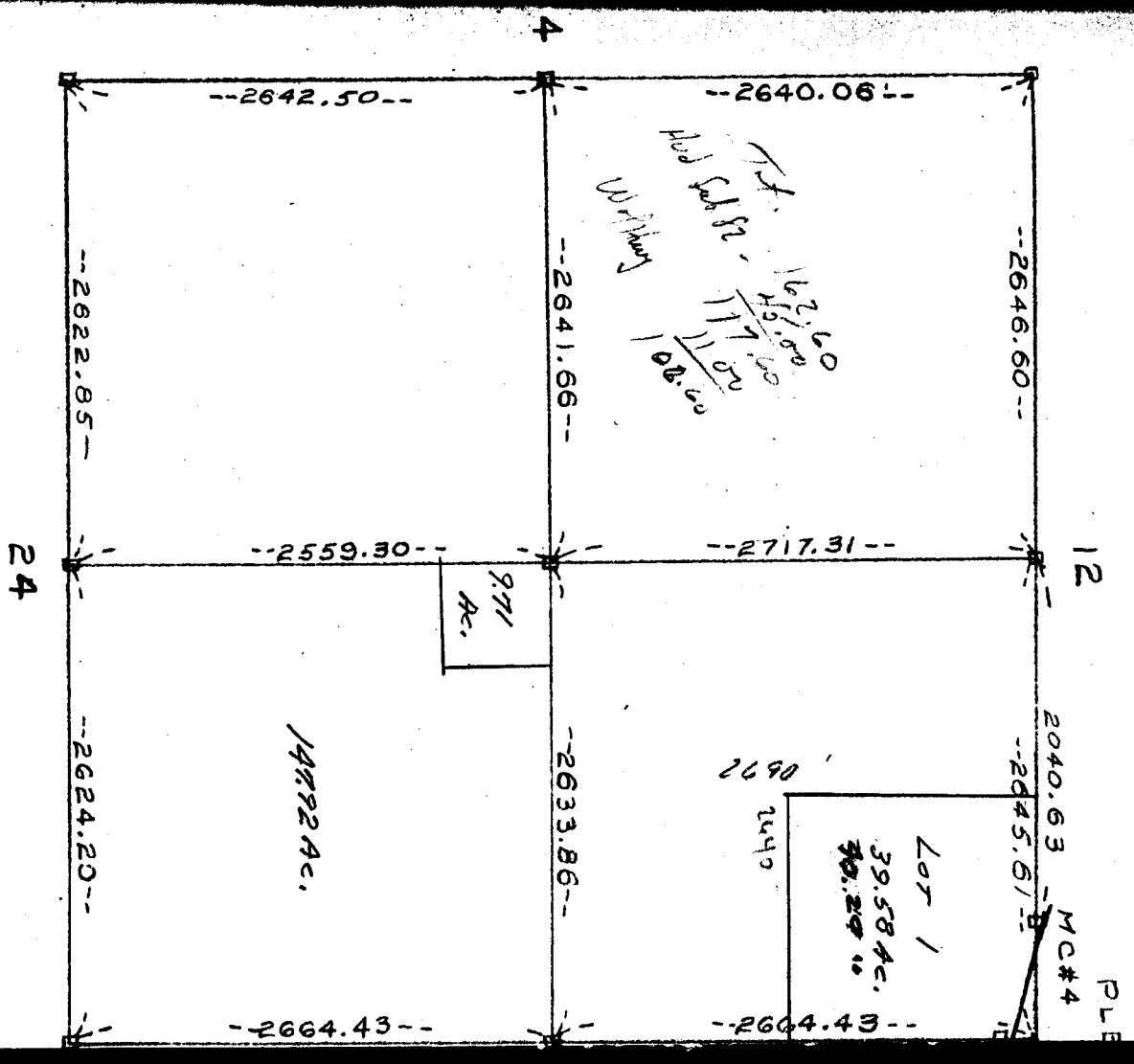
"	"	"	"	SW	"
"	"	"	"	SE	"
"	"	"	"	N $\frac{1}{2}$	"
"	"	"	"	W $\frac{1}{2}$	"
"	"	"	"	S $\frac{1}{2}$	"
"	Iron	"	"	Center of Sic.	"

In establishing the E $\frac{1}{2}$  cor., NE cor., and MC #5, ran straight line north along Range line between Ranges 22 and 23 from SE cor. Sec. 13 to E $\frac{1}{2}$  cor. Sec. 1. Government witness trees gone. Established corners by single proportionment between the two known corners mentioned above. 1 Feb 1950.

Established MC #4 by single proportionment between N $\frac{1}{2}$  cor. Sec. 13 and NE cor Sec. 13, 13 Feb 1950. Government

witness trees gone

NOTE: NE cor. Sec. 13 established on ice.



SEC 13 T30N R23W