

SEC 12 T30N R23W

Found granite monument in place at NW corner

"	"	"	"	"	SW	"
"	"	"	"	"	N $\frac{1}{2}$	"
"	"	"	"	"	W $\frac{1}{2}$	"
"	"	"	"	"	S $\frac{1}{4}$	"

In establishing NE cor., E $\frac{1}{2}$  cor., Secor., Meander Corners

# 1, # 2, # 3, ran straight line north along Range line between Ranges 22 and 23 from SE cor. Sec. 13 to E $\frac{1}{2}$  Sec 1. Government witness trees gone. Established corners by single proportionment between the two known corners mentioned above 1 Feb 1950.

Established center of Sec. 12 by intersection on ice 10 Feb. 1950

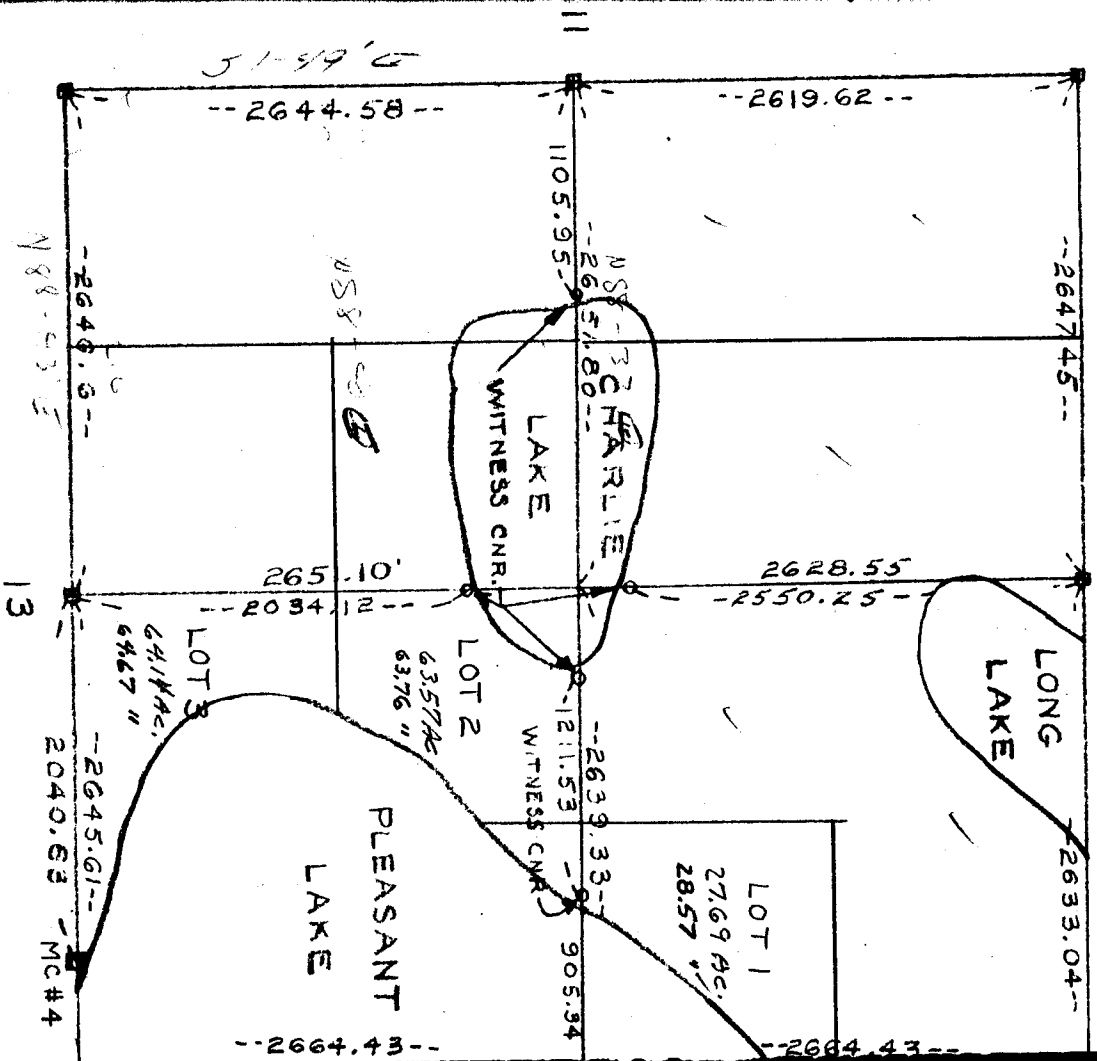
Established MC #4 by single proportionment between S $\frac{1}{4}$  cor. and SE cor. 12 Feb. 1950. Government witness trees gone.

NOTE: E $\frac{1}{2}$  cor. and SE cor. Sec. 12 established on ice.

Established witness corners where EW and NS  $\frac{1}{2}$  lines

intersect shore of Charley Lake 10 Feb 1950, as shown on map

Established witness corner on EW  $\frac{1}{2}$  line Sec. 12 on west shore Pleasant Lake as shown 10 Feb 1950.



SEC 12 T30N R23W