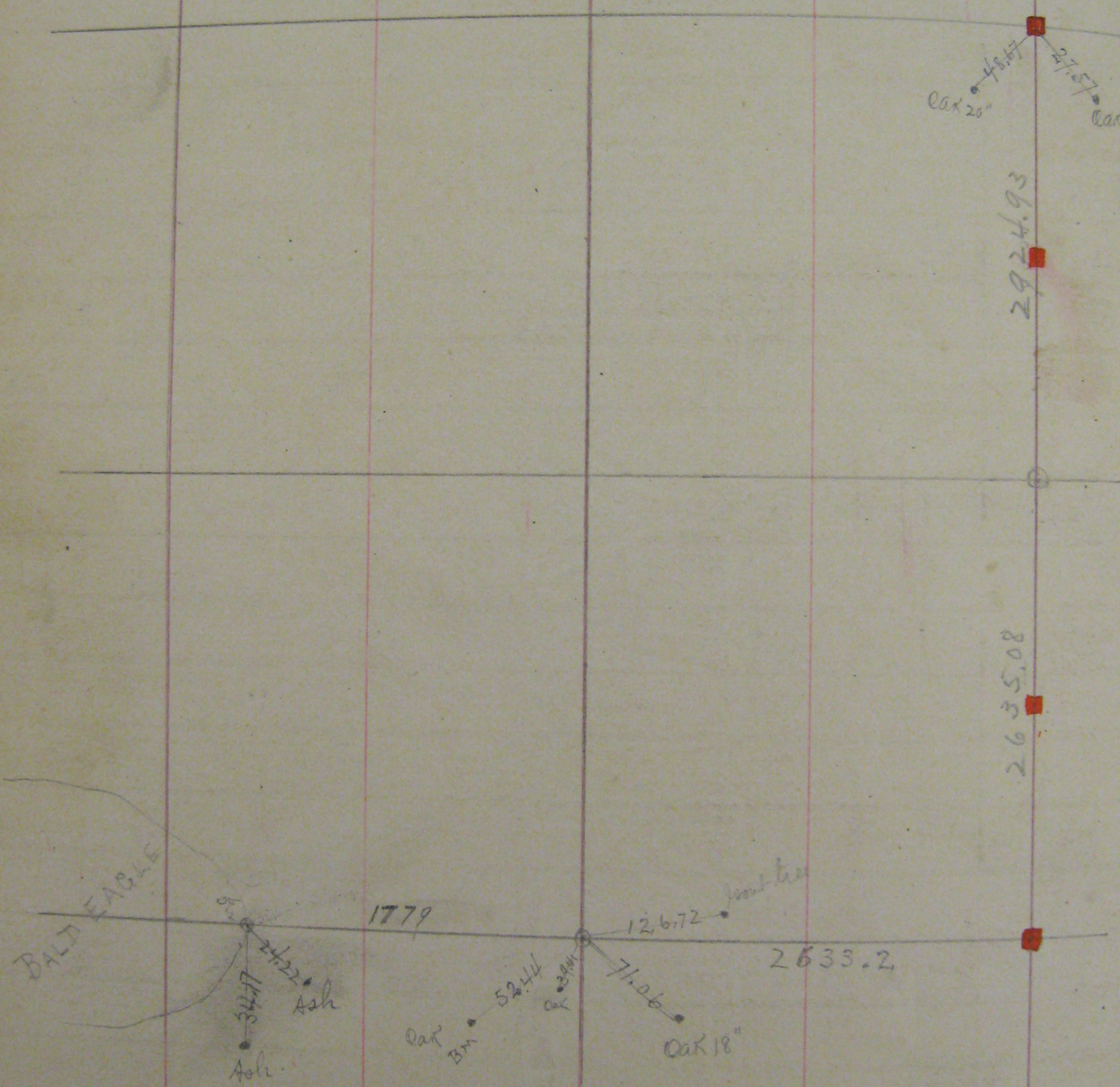


1/4 Cor S of sec 1 found one hout tree standing and  
stake set by Fitzj (OCT 5<sup>th</sup> 1897)

1/4 sec Cor East of sec 1 in Big Meadow found old stake  
Sec Cor N E of sec 1 found Lion Mont Oct - 1897

SEC 1



Set temporary cor for No. 9 Var 8° 30'