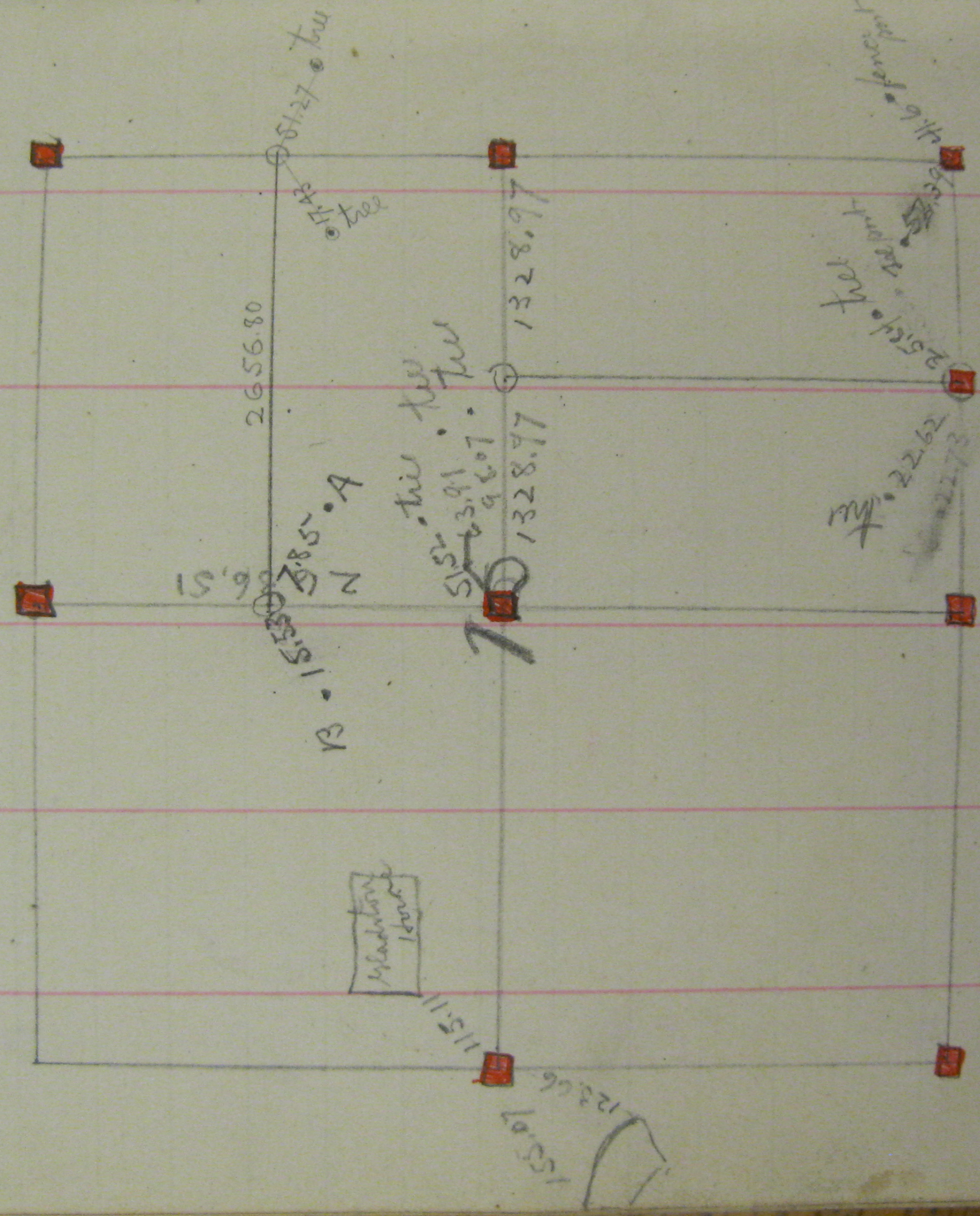


Guards to 1/4 cor North of center of Section 15 T29 R22

A = 3 Nails in fence post - 7,85
B = 3 " " " " - 15,53

Aug 2nd 1887



A = 3
B = 3

A = 3 Nails in Base of Bell @ 12" 27.53
B = 3 " " " @ 10" 42.02
C = 3 " " " of Lembo 22.73

Note = A + B are both chopped down but the stumps are there