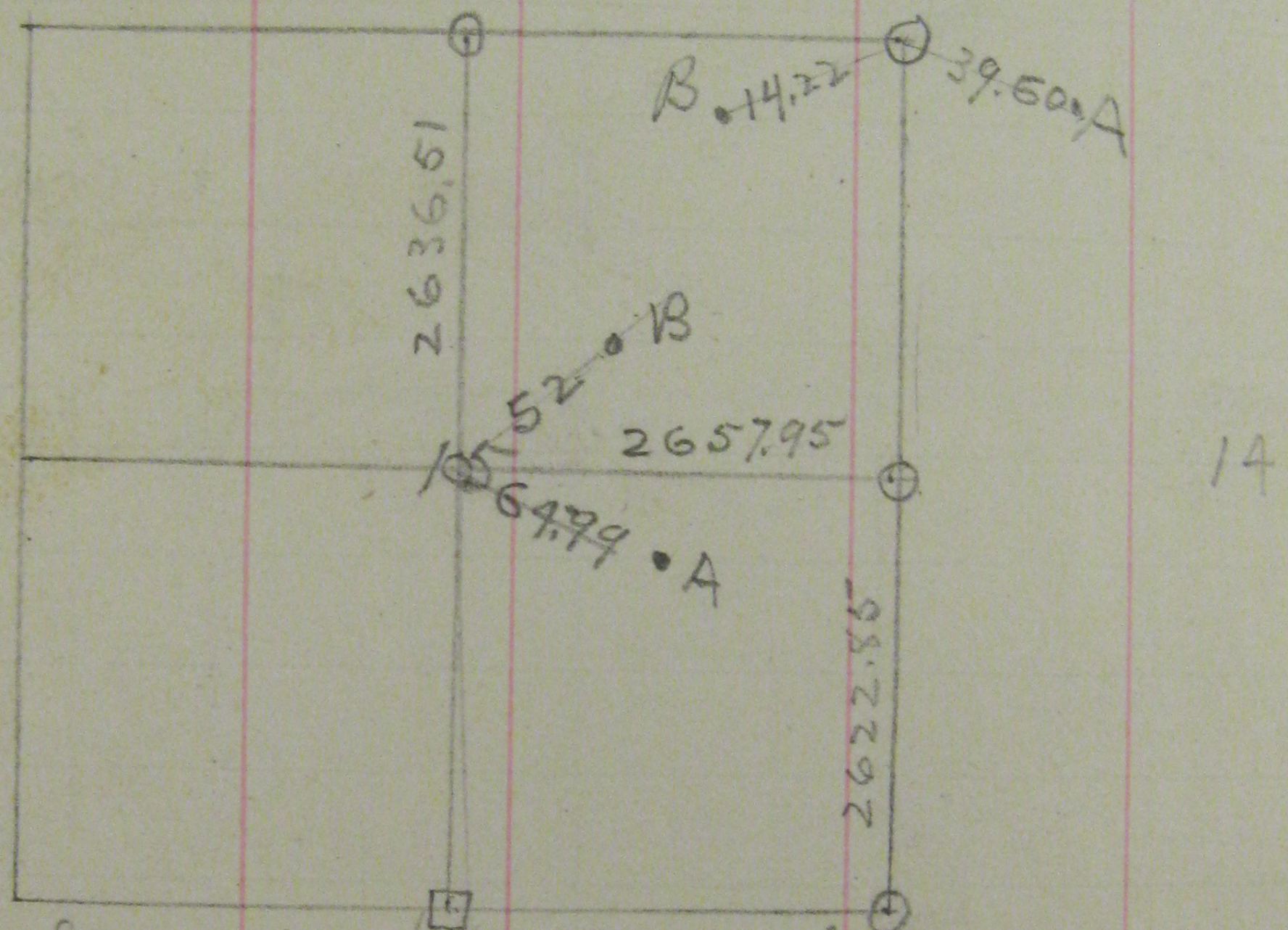


Guards to N.E. cor of Sec 15 T29 R22
Variation $9^{\circ} 27'$



Guards to N.E. cor Sec 15

- A - Nail in Stump of $\frac{1}{2}$ " \odot (18") \angle $32^{\circ} E$ 39.60
- B - 2 Nails in Base of $\frac{1}{2}$ " \odot (8") \angle $44^{\circ} 15' N$ 14.22

Guards to Center of Sec 15

T29 R22

- A - 3 tacks in Box \odot (4) foot and a half from ground 64.99
- B - Nail in base of White \odot (8) 52

and
10
1887
A = 3
B = 3

A = 3
B = 3