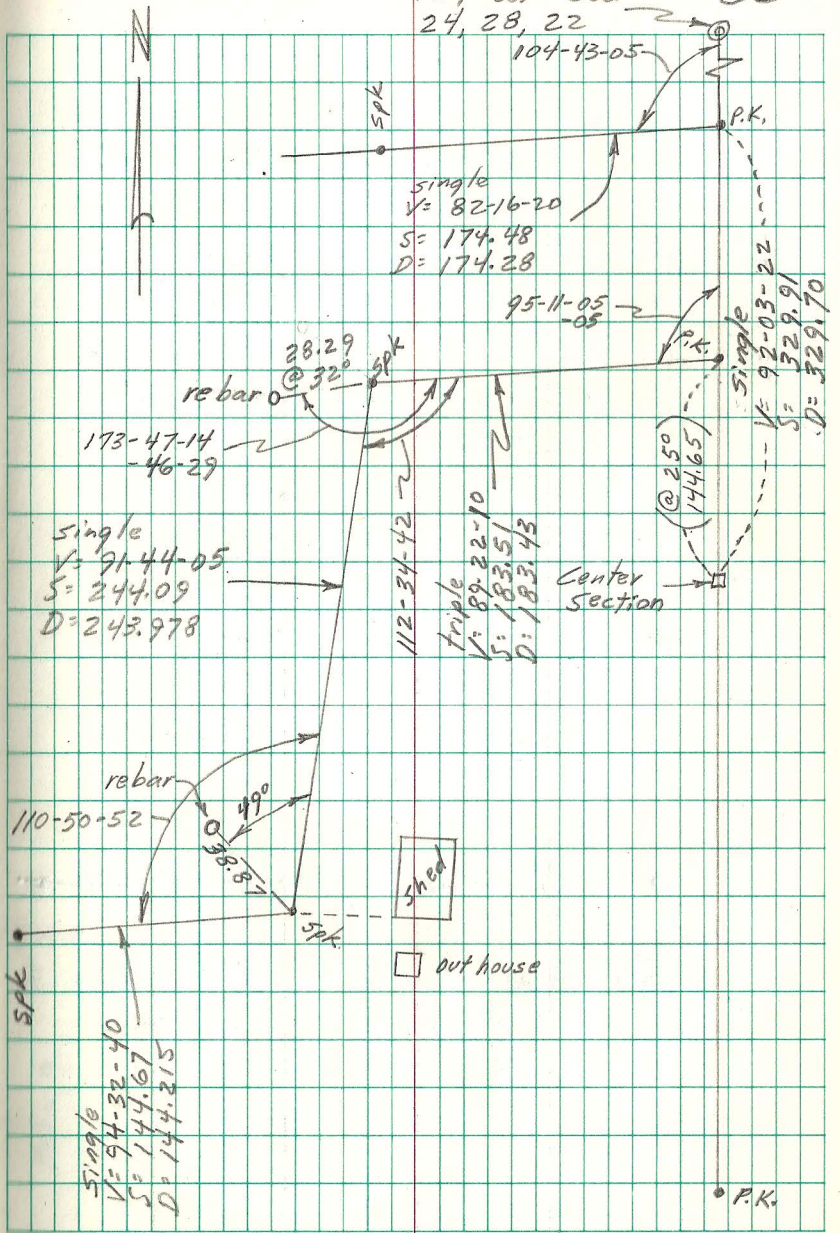


o = iron menu and plastic cap

See page 16, "LITTLE CANADA & McLEAN" for traverse work.

March & April, 1980

N¹/₄ Cor Sec 24, 28, 22 33



single
V = 82-16-20
S = 174.48
D = 174.28

single
V = 91-44-05
S = 244.09
D = 243.978

triple
V = 89-22-10
S = 183.51
D = 183.43

single
V = 94-32-40
S = 144.67
D = 144.215

□ out house

P.K.