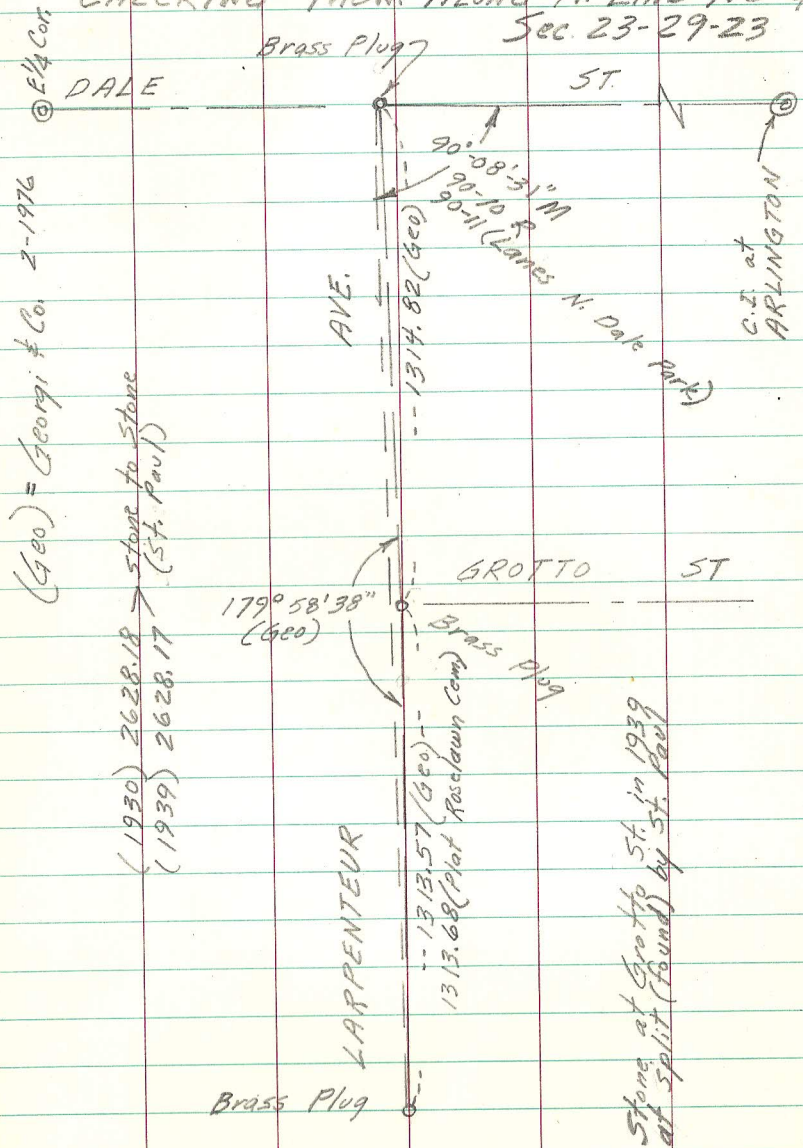


CHECKING MON. ALONG N. LINE NE 1/4

Sec. 23-29-23



(Geo) = Georgi & Co. 2-1976

(1930) 2628.18 stone to stone
(1939) 2628.17 (St. Paul)

Brass Plug

LARPEN TEUR

1313.57 (Geo)
1313.68 (Plot Rosclaw Com)

179° 58' 38\"

GROTTO ST

AVE.

1314.82 (Geo)

90° 58' 31\"

90-10 R

90-11 (Lanes N. Dale Park)

DALE

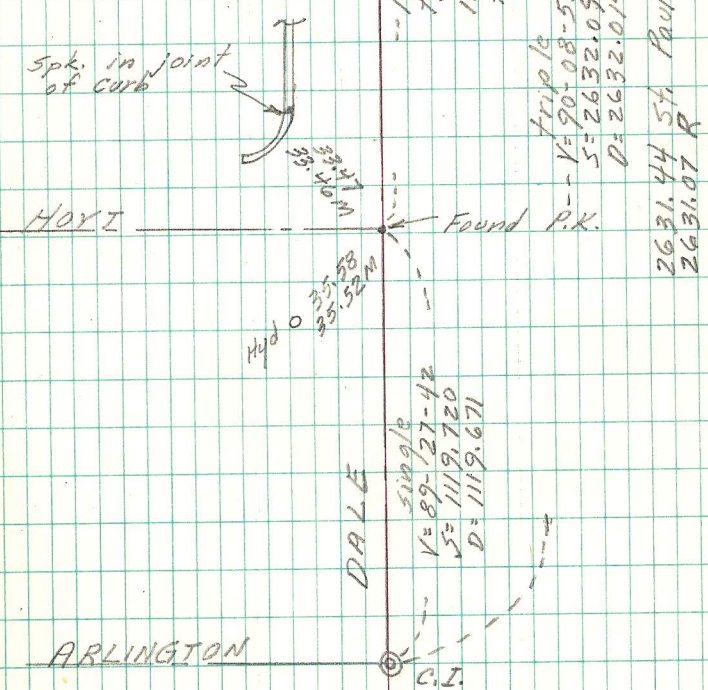
ST.

C.I. at ARLINGTON

Stone at Grotto St. in 1939 at split (found by St. Paul)

March & April, 1976

R = Record on Section Maps
Ties from St. Paul when stone existed at Larp. Av. & Dale St.



HOYT

ARLINGTON

DALE

single
V = 89-121-42
S = 1119.120
D = 1119.671

1512.00 ST Paul --
to stone at Larp. Av.

1512.343 M
to brass plug

tripole
V = 90-08-57 --
S = 2632.090
D = 2632.014

2631.44 St Paul
2631.07 R

Found P.K.

Brass Plug (3-1976)
LARPEN TEUR

ST.

C.I.

Spk. in joint of curb

