

SECTION 18, T29, R22

(MEASURING)

See Page 40

See Page 37

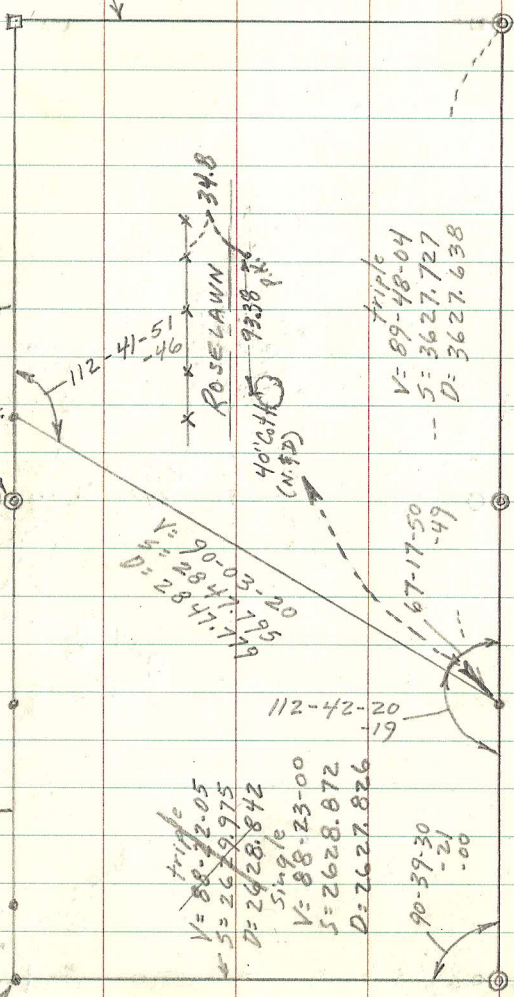
N 1/4 Cor (C.I.)

See Page 43

P.K.

P.K.

Brass Plug  
N.W. Cor.  
Sec. 18-29-22



triple  
V= 89-48-04  
S= 3627.727  
D= 3627.638

V= 90-03-20  
S= 2847.795  
D= 2847.799

triple  
V= 88-32-05  
S= 2629.975  
D= 2628.842

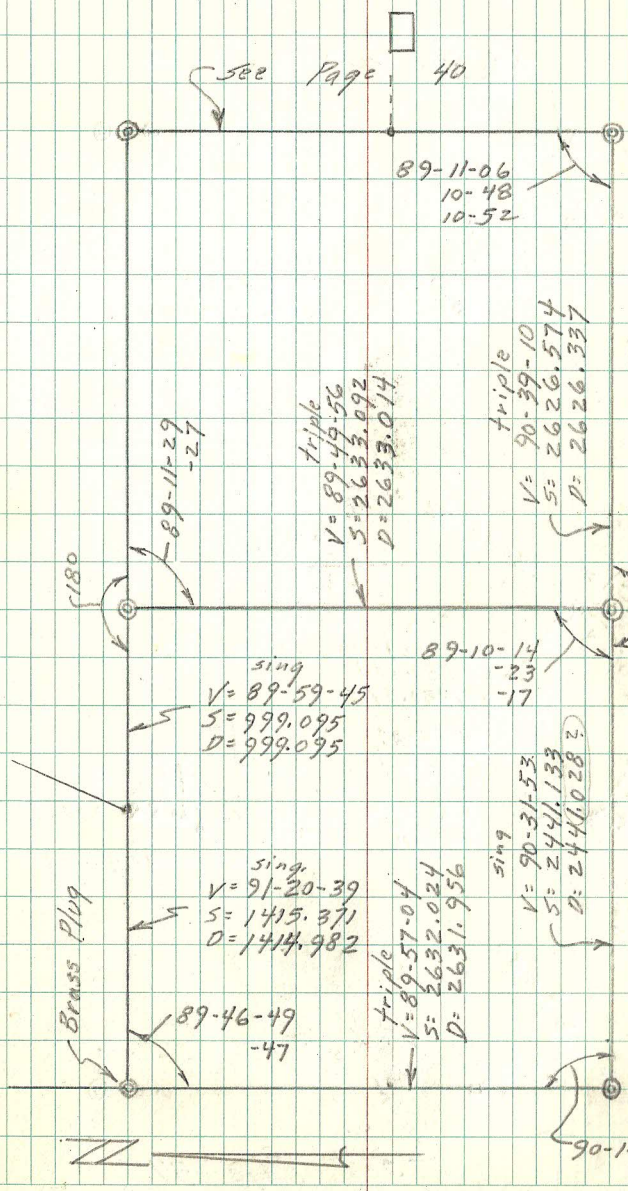
single  
V= 88-23-00  
S= 2628.872  
D= 2627.826

90-39-30  
-21  
-00

See Page 40

(180)

Brass Plug



triple  
V= 89-49-56  
S= 2635.092  
D= 2633.014

single  
V= 89-59-45  
S= 999.095  
D= 999.095

single  
V= 91-20-39  
S= 1415.371  
D= 1414.982

triple  
V= 89-57-04  
S= 2632.024  
D= 2631.956

triple  
V= 90-39-10  
S= 2626.574  
D= 2626.337

89-10-14  
-23  
-17

single  
V= 90-31-53  
S= 2441.133  
D= 2441.028

90-14-31  
-30

179-47-56  
-56