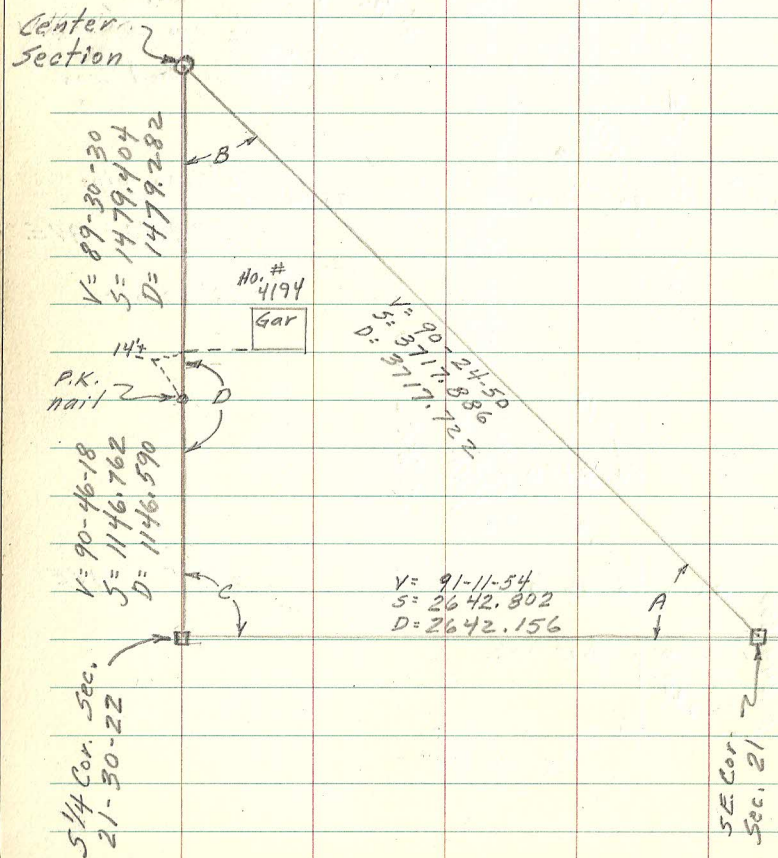


SECTION 21, T30, R22  
(measuring W. & S. line SE 1/4)



NWly	239-41-42 E	59-41-42 R
West	194-45-22 E	14-45-19 R
<hr/>		<hr/>
A= 44-56-21.5	44-56-20	44-56-23
South	139-45-16 E	319-45-16 R
SEly	94-28-15 E	274-28-09 R
<hr/>		<hr/>
B= 45-17-04	45-17-01	45-17-07
East	337-26-41 E	157-26-50 R
North	247-40-42 E	67-40-42 R
<hr/>		<hr/>
C= 89-46-04	89-45-59	89-46-08
South	259-01-52 E	79-01-41 R
North	79-01-30 E	259-01-24 R
<hr/>		<hr/>
D= 180-00-20	180-00-22	180-00-17