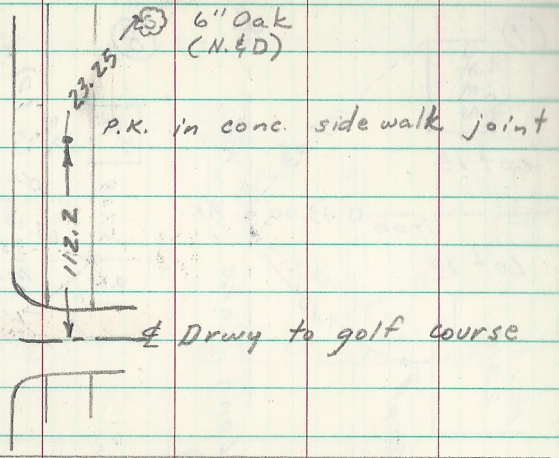


(12)

Silver L. Rd.

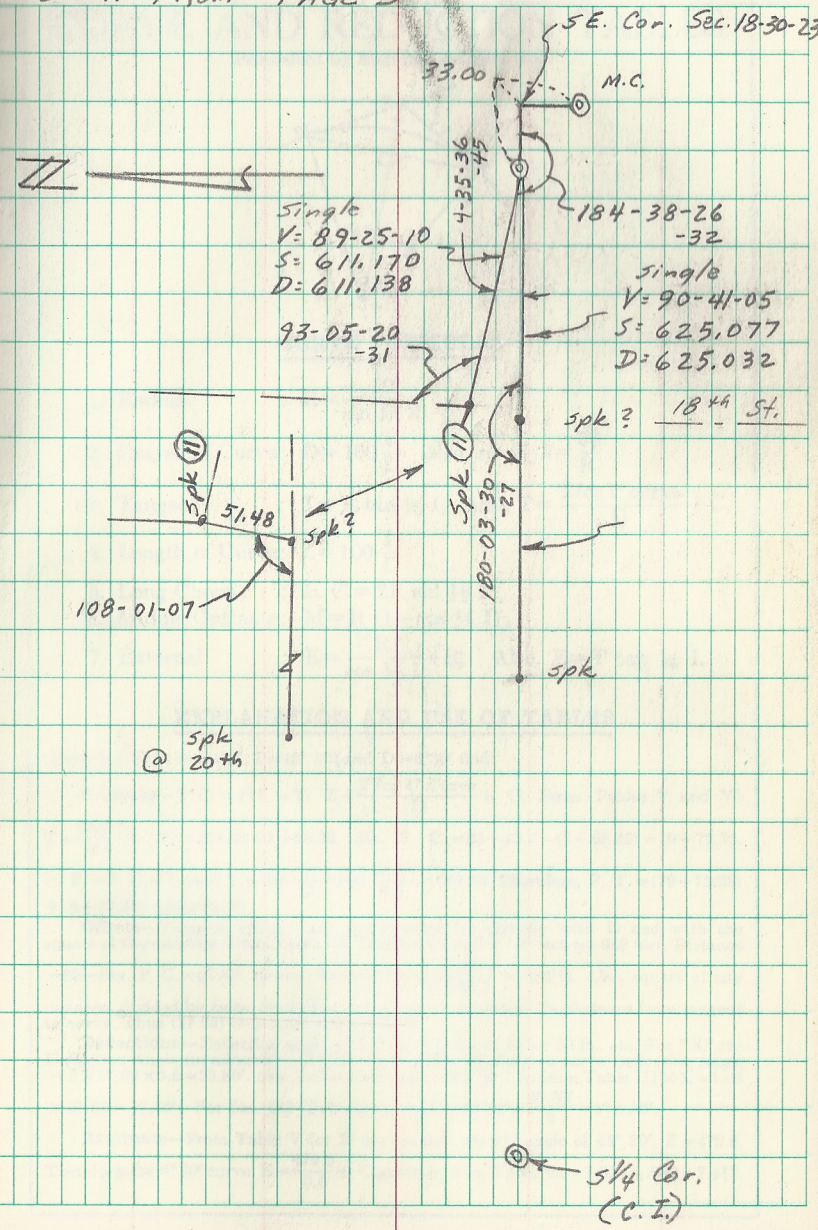


6" Oak (N. & D)
 P.K. in conc. sidewalk joint

112.2
 23.25
 Drwy to golf course

CONT. FROM PAGE 5

76



SE. Cor. Sec. 18-30-23

M.C.

33.00

4-35-36
 -45

184-38-26
 -32

Single
 V= 89-25-10
 S= 611.170
 D= 611.138

Single
 V= 90-41-05
 S= 625.077
 D= 625.032

93-05-20
 -31

Spk? 18⁴⁴ St.

108-01-07

Spk 11

51.48

Spk?

Spk 11

180-03-30
-27

Spk

@ Spk
 20th

5/4 Cor.
 (C.I.)