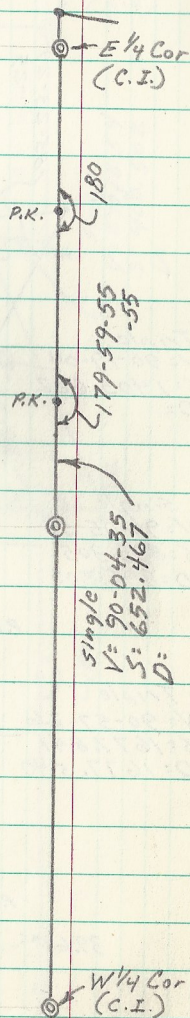


# SECTION 30, T30, R23 (Measuring)



W/4 Cor  
(C.I.)

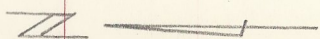
P.K.

P.K.

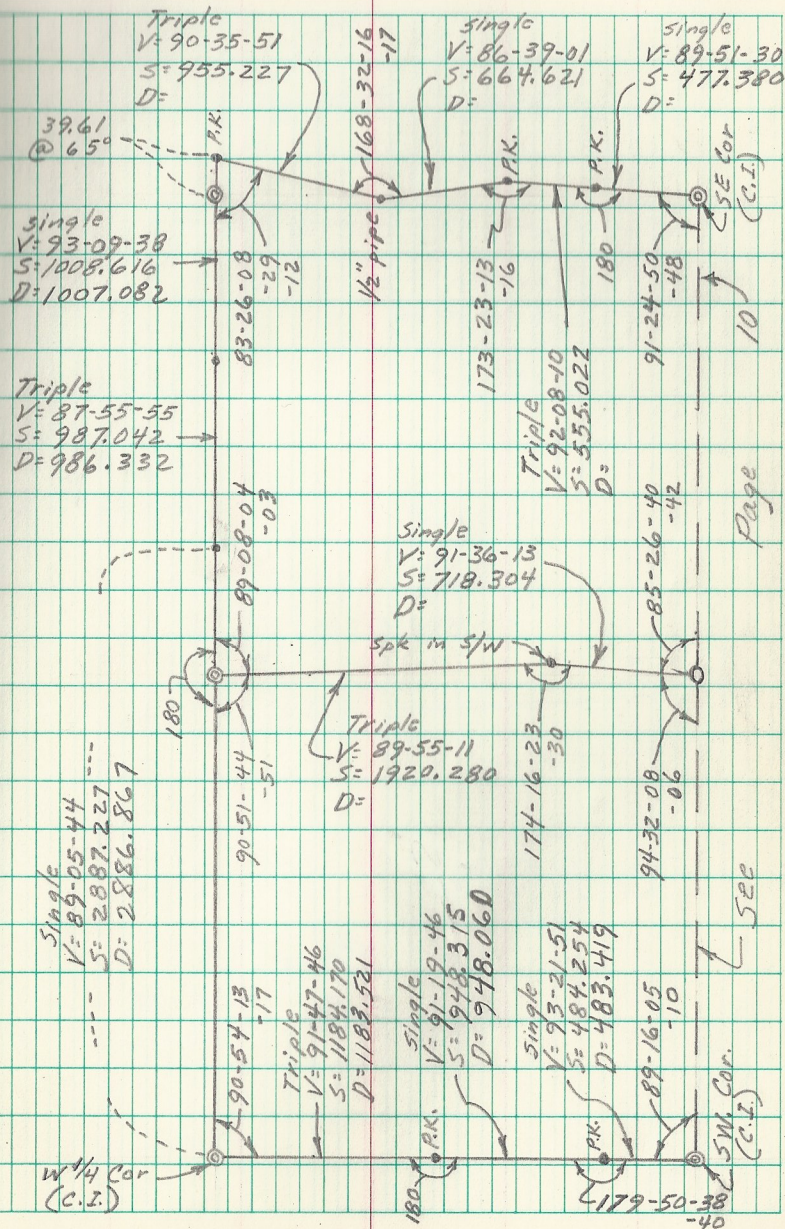
single  
V: 90-04-35  
S: 652.467  
D: 180

W/4 Cor  
(C.I.)

Sept. 1977



22



39.61  
@ 65°

Triple  
V: 90-35-51  
S: 955.227  
D: 168-32-16-17

single  
V: 86-39-01  
S: 664.621  
D: 173-23-13-16

single  
V: 89-51-30  
S: 477.380  
D: 91-24-50-48

single  
V: 93-09-38  
S: 1008.616  
D: 107-26-08-29-12

Triple  
V: 87-55-55  
S: 987.042  
D: 89-08-04-03

Triple  
V: 92-08-10  
S: 555.022  
D: 174-16-23-30

Single  
V: 91-36-13  
S: 718.304  
D: 85-26-40-42

Triple  
V: 89-55-11  
S: 1920.280  
D: 94-32-08-06

Single  
V: 89-05-44  
S: 2887.227  
D: 2886.867

Triple  
V: 91-47-46  
S: 1184.170  
D: 1183.521

Single  
V: 91-19-46  
S: 948.315  
D: 948.060

single  
V: 93-21-51  
S: 484.254  
D: 483.419

W/4 Cor  
(C.I.)

P.K.

P.K.

5M Cor  
(C.I.)

SEE

Page

10

SEE Cor  
(C.I.)