

# MINNESOTA DEPARTMENT OF TRANSPORTATION CERTIFICATE OF LOCATION OF GOVERNMENT CORNER

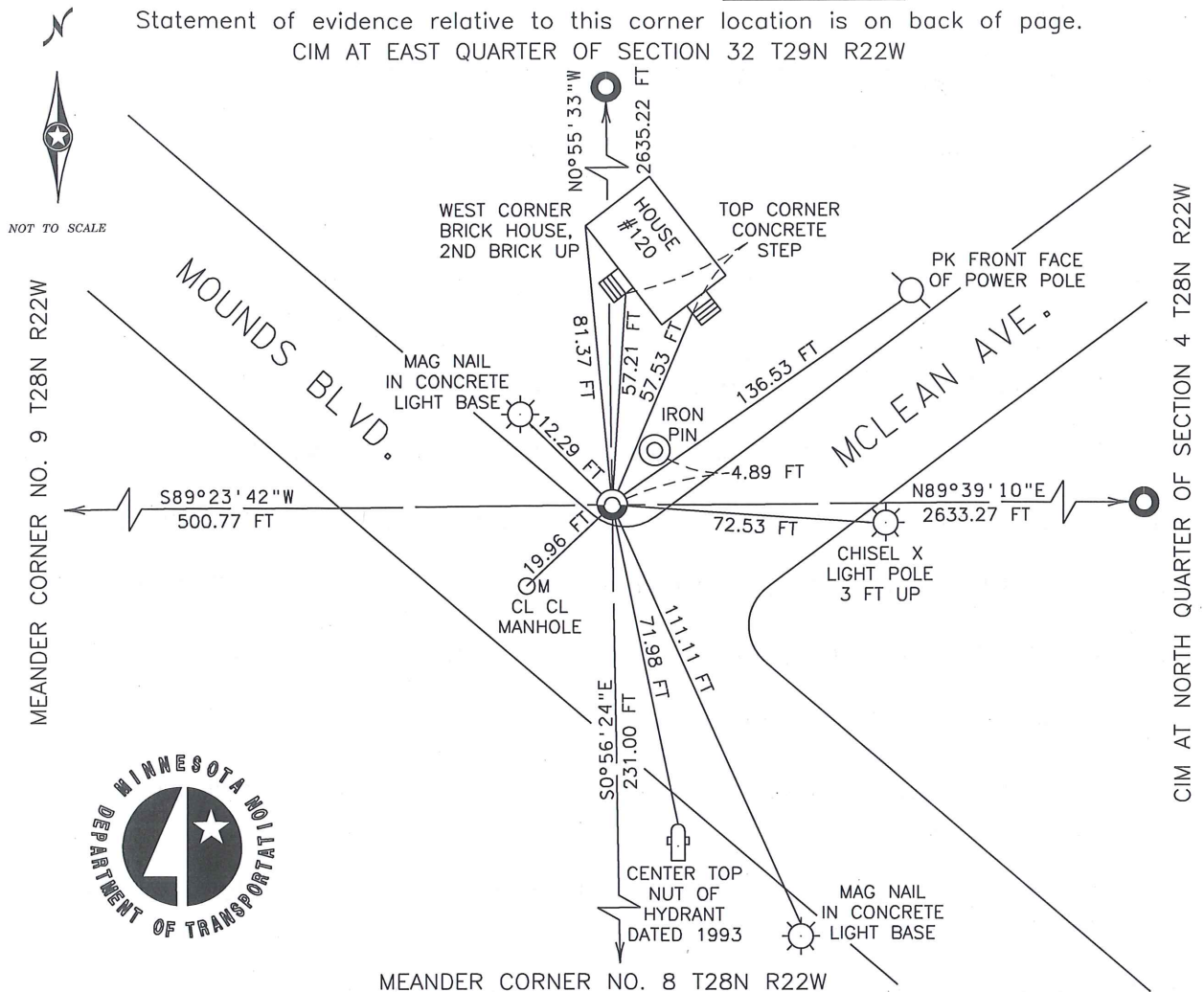
NORTHEAST CORNER \_\_\_\_\_, Section 5, Township 28 North, Range 22 West,  
4th Principal Meridian Survey, Ramsey County, Minnesota.

At the corner location shown on the sketch:

- On MARCH 1, 2013 MNDOT DISTRICT SURVEYS FOUND A BRONZE CAP  
FLUSH WITH CONCRETE SIDEWALK
- left monument as found,     lowered monument,     removed monument (explain)
- On APRIL 17, 2014 MNDOT DISTRICT SURVEYS MEASURED REFERENCE TIES

Corner reference ties measured on April 17, 2014

Statement of evidence relative to this corner location is on back of page.  
CIM AT EAST QUARTER OF SECTION 32 T29N R22W



Non PLS tie distances are slope distances measured with a temperature corrected steel tape. Bearings are based on Ramsey County NAD 83 (1996) coordinates.

I hereby certify that this document and the data contained herein was prepared by me or under my direct supervision. I further certify that this document conforms to applicable portions of Minnesota State Statute 381.12.

Kevin M. Sutherland  
Kevin M. Sutherland, MndOT Surveys  
Minnesota License No. 50807

5-2-14  
Date

**Northeast Corner, Section 5, T. 28 N. - R. 22 W.****Statement of Evidence**

- 1847 October 6, James M Marsh deputy surveyor set post. Tied to 4 BTs. See JM p.064-065 border
- 1877 (Unknown date Mar \_\_, 1877 ) One bearing tree in. Cedar stake replaced by monument
- 1904 August 18, The plat of OGDEN'S ADDITION recorded Sept 14, 1904 shows a GM inplace.
- 1943 (Unknown date Jul \_\_, 1943 ) Placed ties. See FB 1360 p.4
- 1972 April 7, Fd drill hole in sidewalk. See FB 1689A p.10
- 1985 (Unknown date \_\_ \_\_, 1985 ) Historic, one time only GPS survey = S500
- 1985 (Unknown date Oct \_\_, 1985 ) Drill Hole in concrete sidewalk
- 1994 (Unknown date Feb \_\_, 1994 ) Elev 126.80 ft on drill hole. See acorrdat/1993/s8100. Total Station survey Bates/McLean C.S.S.P
- 1994 February 10, Fd drill hole in concrete sidewalk. See CofL 0141-0111-A
- 2000 March 17, Fd drill hole in walk (marked for painting target for 2000 targeted)
- 2002 March 13, Elev 126.98 ft on drill hole at sidewalk surface. See FB 1736 p.41
- 2002 April 3, Elev 126.97 ft on drill hole at sidewalk surface. See FB 1736 p.46
- 2006 October 6, Fd drill hole in sidewalk. Photos taken.
- 2006 October 18, Dug down 1.0 ft along side of walk, GM still inplace below sidewalk. Photos taken.
- 2006 November 1, Fd drill hole in sidewalk. DH approx 0.1 ft SE'ly of hole in GM. See yellow keil mark in photo. Photos taken.
- 2006 November 1, Placed rebar with bronze cap over GM at sidewalk grade. Tied GM See CofL 0141-0111-B
- 2012 November 7, Found CIM at sidewalk grade. Photos taken.
- 2013 March 1, MnDOT survey personnel found a bronze cap at sidewalk grade
- 2014 April 17, MnDOT survey personnel measured reference ties as shown on the front of this certificate