

MINNESOTA DEPARTMENT OF TRANSPORTATION CERTIFICATE OF LOCATION OF GOVERNMENT CORNER

EAST QUARTER CORNER, Section 8, Township 29 North, Range 23 West,
4th Principal Meridian Survey, Ramsey County, Minnesota.

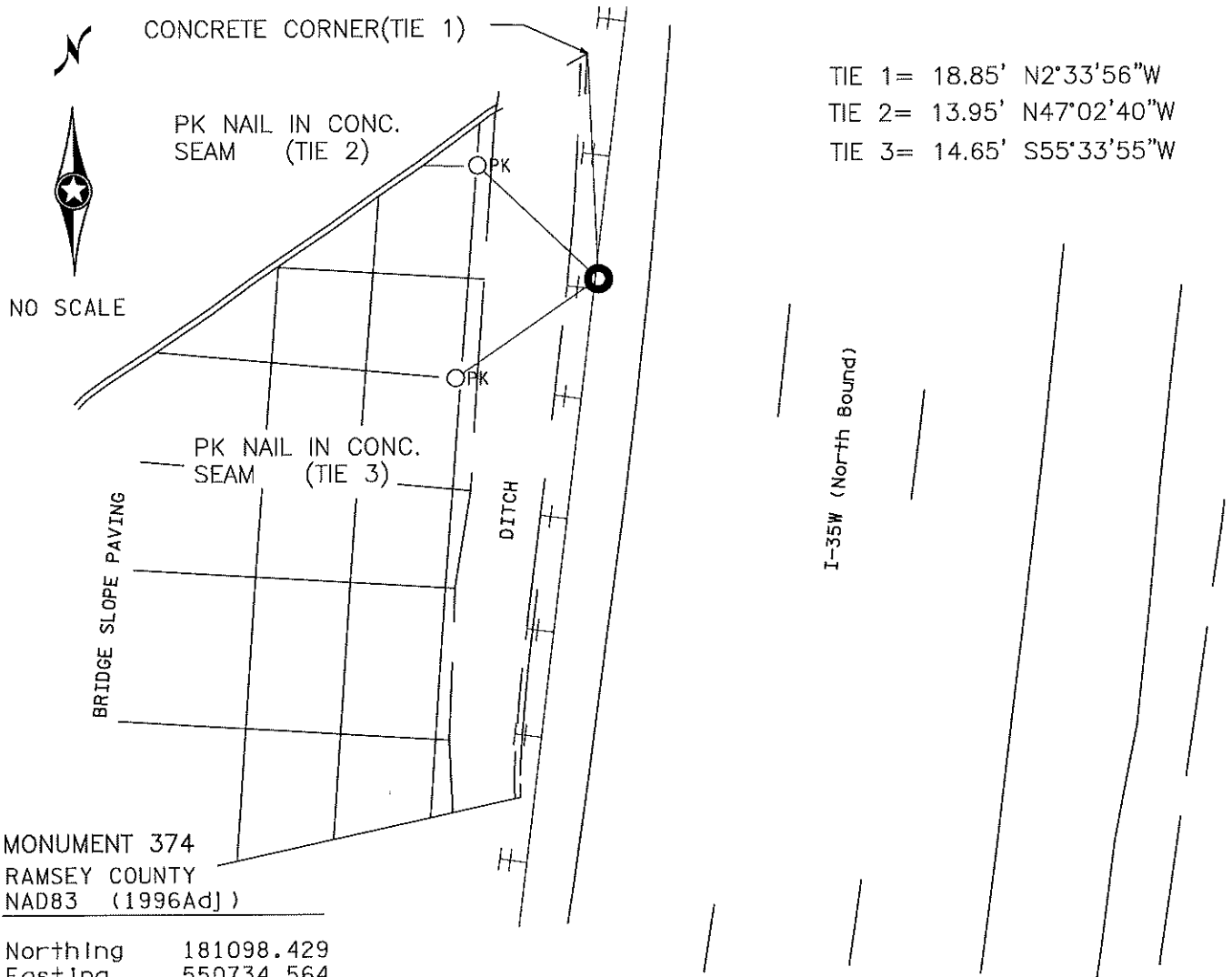
At the corner location shown on the sketch:

- On April 13th, 2022 found A DAMAGED CAST IRON MONUMENT (BROKEN TOP)
 left monument as found, lowered monument, removed monument (explain)

On _____ placed a _____

Corner reference ties measured on APRIL 13TH, 2022

Statement of evidence relative to this corner location is on back of page.



MONUMENT 374
 RAMSEY COUNTY
 NAD83 (1996Adj)

Northing 181098.429
 Easting 550734.564

Tie distances are horizontal distances measured with a total station EDM.

I hereby certify that this document and the data contained herein was prepared by me or under my direct supervision. I further certify that this document conforms to applicable portions of Minnesota State Statute 381.12.

Michael D. Nelson
 Michael D. Nelson, Mn/DOT Surveys
 Minnesota License No. 49546

4/29/22
 Date

East Quarter Corner, Section 8, T. 29 N. - R. 23 W.**Statement of Evidence**

- 1847 November 2nd, Isaac N Highbee, Deputy Surveyor United States Public Land Surveys indicates in his field notes that he "Set 1 / 4 Section Post"
Two ties were recorded:
Bur Oak 12 inch diameter N 73 W 27 links
Bur Oak 11 inch diameter S 73 E 95 links
- 1896 August, Ramsey County Resurvey Noted Fixed 1/4 corner between Sections 8 and 9 from line of old fence running West. Government witness trees gone
- 1898 May 9th, Ramsey County Set Monument
- 1975 June 25th, Minnesota Highway Department set cast iron monument.
- 1977 July 15, Ramsey County field crew found cast iron and checked ties.
- 1980 Ramsey County field crew found cast iron top broken-off, base still in place.
- 1990 August 14th, Ramsey County crew removed broken cast iron; placed 20" C.I. and retied.
- 2022 April 13th, MnDOT survey personnel found a broken cast iron monument down 0.9 feet. Monument was pushed westerly of the road approximately 0.17' feet. The 3 tie positions are held for a computed NAD83(1996) Ramsey County Coordinate. Due to accessibility and safety reasons this monument will not be maintained anymore, and a witness will be set.

Summary and Conclusion:

This Certificate of Location is a perpetuation of the cast iron monument set on August 14th, 1990.