

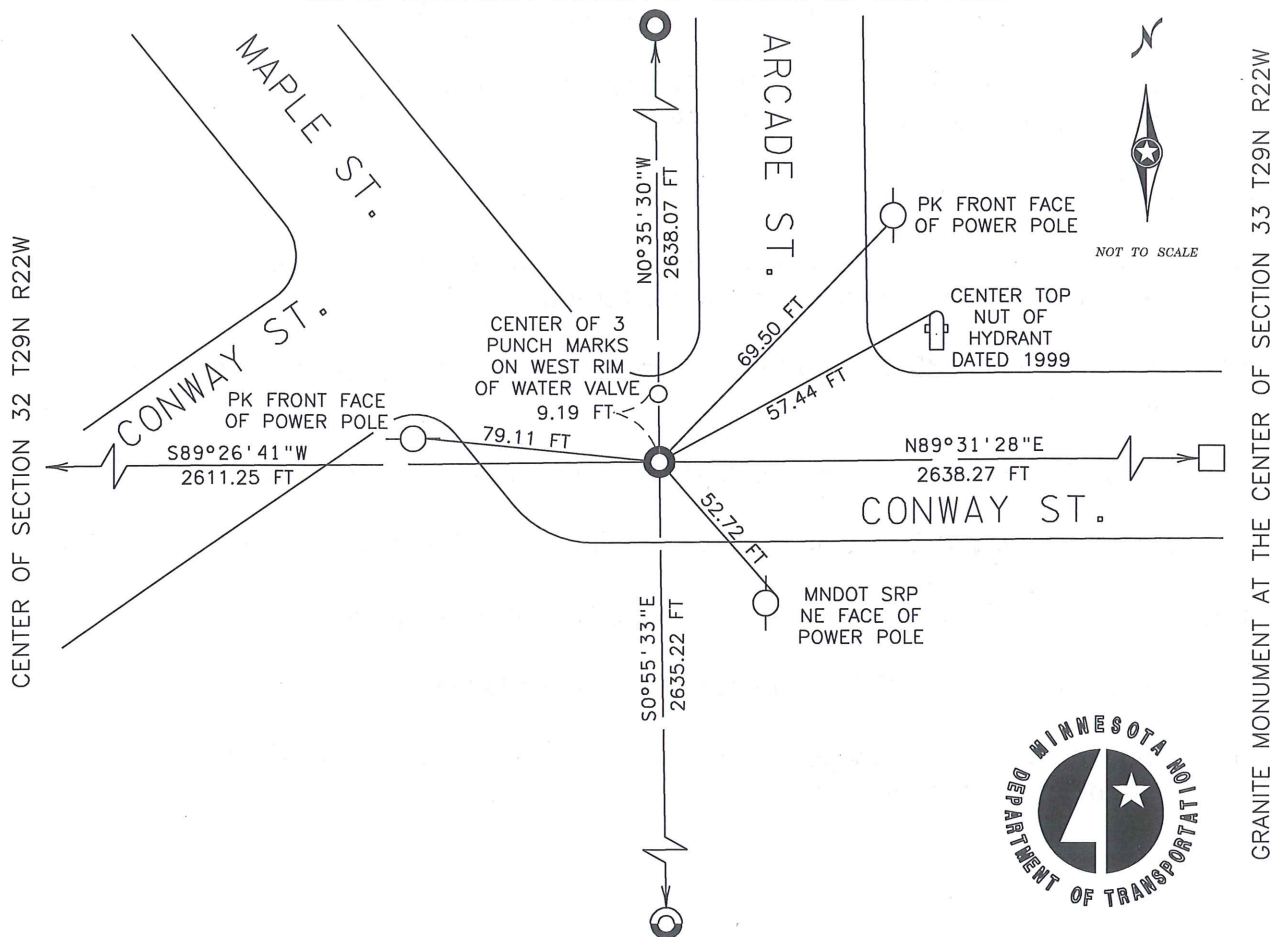
MINNESOTA DEPARTMENT OF TRANSPORTATION CERTIFICATE OF LOCATION OF GOVERNMENT CORNER

EAST QUARTER CORNER, Section 32, Township 29 North, Range 22 West,
4th Principal Meridian Survey, Ramsey County, Minnesota.

At the corner location shown on the sketch:

- On JULY 11, 2006 MNDOT DISTRICT SURVEYS FOUND A CIM FLUSH WITH BITUMINOUS SURFACE
- left monument as found, lowered monument, removed monument (explain)
- On APRIL 17, 2014 MNDOT DISTRICT SURVEYS MEASURED REFERENCE TIES

Corner reference ties measured on April 17, 2014
Statement of evidence relative to this corner location is on back of page.
CIM AT NORTHEAST CORNER OF SECTION 32 T29N R22W



BRONZE CAP AT THE NORTHEAST CORNER OF SECTION 5 T28N R22W

Non PLS tie distances are slope distances measured with a temperature corrected steel tape. Bearings are based on Ramsey County NAD 83 (1996) coordinates.

I hereby certify that this document and the data contained herein was prepared by me or under my direct supervision. I further certify that this document conforms to applicable portions of Minnesota State Statute 381.12.

Kevin M. Sutherland
Kevin M. Sutherland, MnDOT Surveys
Minnesota License No. 50807

5-2-14
Date



GRANITE MONUMENT AT THE CENTER OF SECTION 33 T29N R22W

East Quarter Corner, Section 32, T. 29 N. - R. 22 W.

Statement of Evidence

- 1847 (Unknown date Nov __, 1847) Isaac N Higbee deputy surveyor set post. Tied to 2 BTs. See IH p.198-199 2922
- 1887 (Unknown date __ __, 1887) Monument showing center of St as graded in 1887 set by Chas Hunt according to Armstrong's survey
- 1889 (Unknown date Jan __, 1889) Monument set by McCoy.
- 1972 February 16, No mon't fd, no ties, need location. See FB 1689A p.6
- 1972 April 13, Fd iron pin in street, straddled pin, dug down 4 ft removing pin, set CIM in bituminous surface. See FB 1689A p.11
- 1987 (Unknown date Mar __, 1987) Fd PK nail at grade.
- 1992 October 13, Fd broken CIM, checked ties, added new ties, removed broken CIM, set new CIM to grade. See CofL 0120-0091-A
- 1997 March 26, Elev 185.02 ft on CIM. See acorrdat/1997/p1157/p1157.sdr Digital-Unadj
- 2000 March 17, Fd CIM at grade (marked for painting target for 2000 aerial)
- 2002 March 13, Elev 185.11 ft on CIM at asphalt surface. See FB 1736 p.41
- 2006 July 11th, MnDOT survey personnel found CIM at street grade
- 2012 November 5, Found CIM at street grade. Photos taken.
- 2014 April 17, MnDOT survey personnel measured reference ties as shown on the front of this certificate