

# CERTIFICATE OF LOCATION OF GOVERNMENT CORNER

CITY MON. NO. 213

OLD INDEX NO. 1282

NW 1/4 Corner of Section 16 Township 28 Range 23, 4<sup>th</sup> P.M.

STATE OF MINNESOTA, County of Ramsey

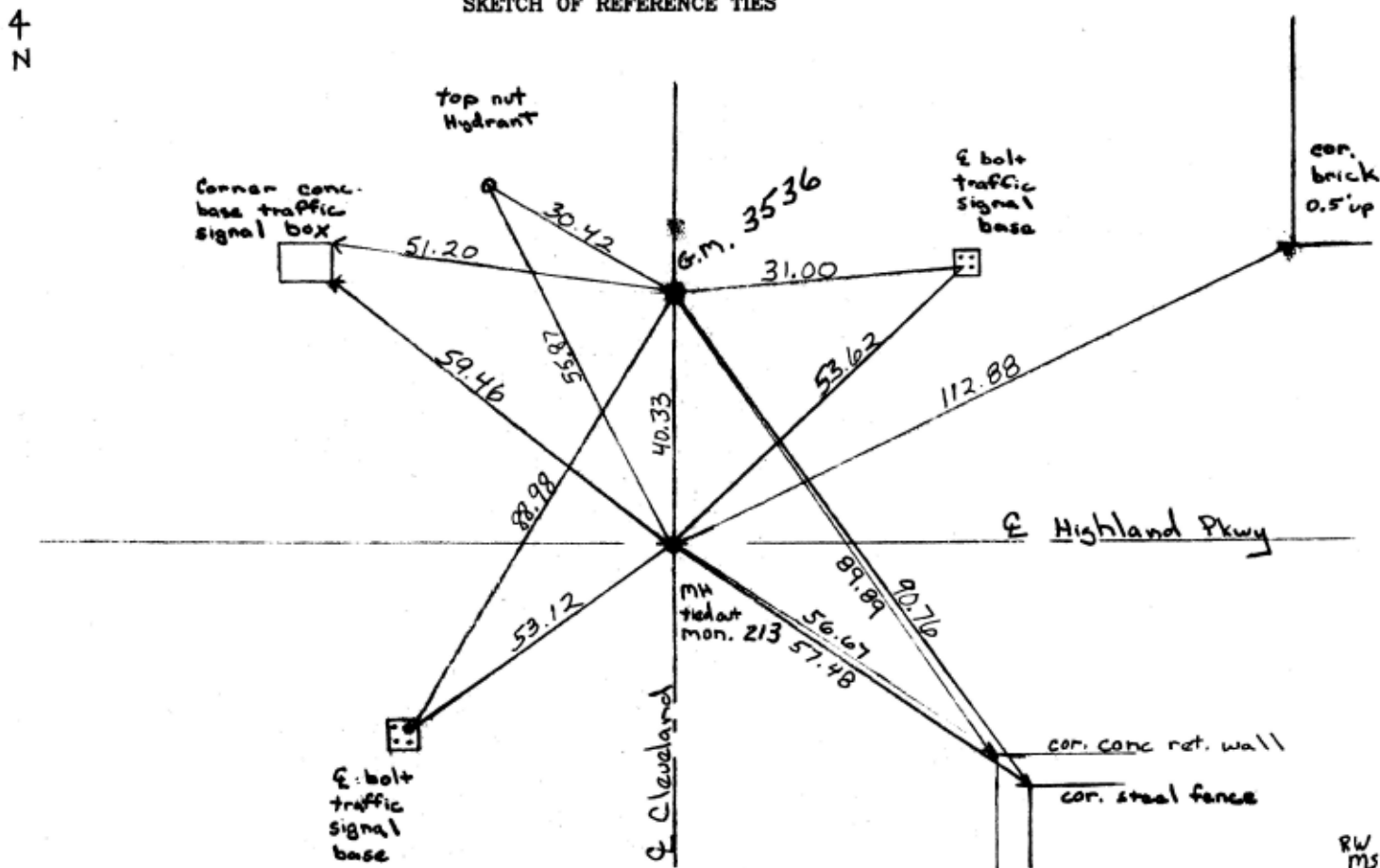
At the corner location shown on the sketch:

On 1-2-01 found a GRANITE MONT. WITNESS CORN. 40 BELOW  
date

GRADE / 2' STRADDLES (PK) THIS SEC. CORNER FALLS ON MH & E HIGHLAND & CLEVELAND  
 left monument as found     lowered monument     removed monument (explain)

On \_\_\_\_\_ placed a \_\_\_\_\_  
date

SKETCH OF REFERENCE TIES



Statement of evidence relative to this corner is available from the St. Paul Public Works Dept., Survey Division

I hereby certify that this document and the data contained herein was prepared by me or under my direct supervision.

Anthony J. Piro 11/3/01  
 SIGNATURE DATE  
 Registration No. 13144  
 Land Surveyor     County Surveyor  
 Professional Engineer  
 Chief Surveyor, City of St. Paul

Office of The County Recorder, County of Ramsey

I hereby certify that this document was filed in the county  
Recorders office at \_\_\_\_\_ M. on the \_\_\_\_\_ day of \_\_\_\_\_

County Recorder \_\_\_\_\_

By \_\_\_\_\_, Deputy

DOCUMENT NUMBER \_\_\_\_\_