

# CERTIFICATE OF LOCATION OF GOVERNMENT CORNER

MON. NO. 2397  
OLD INDEX 1340

W. MEANDER Corner of Section 23/24 Township 29 Range 23, 4 P.M.

STATE OF MINNESOTA, County of Ramsey

At the corner location shown on the sketch:

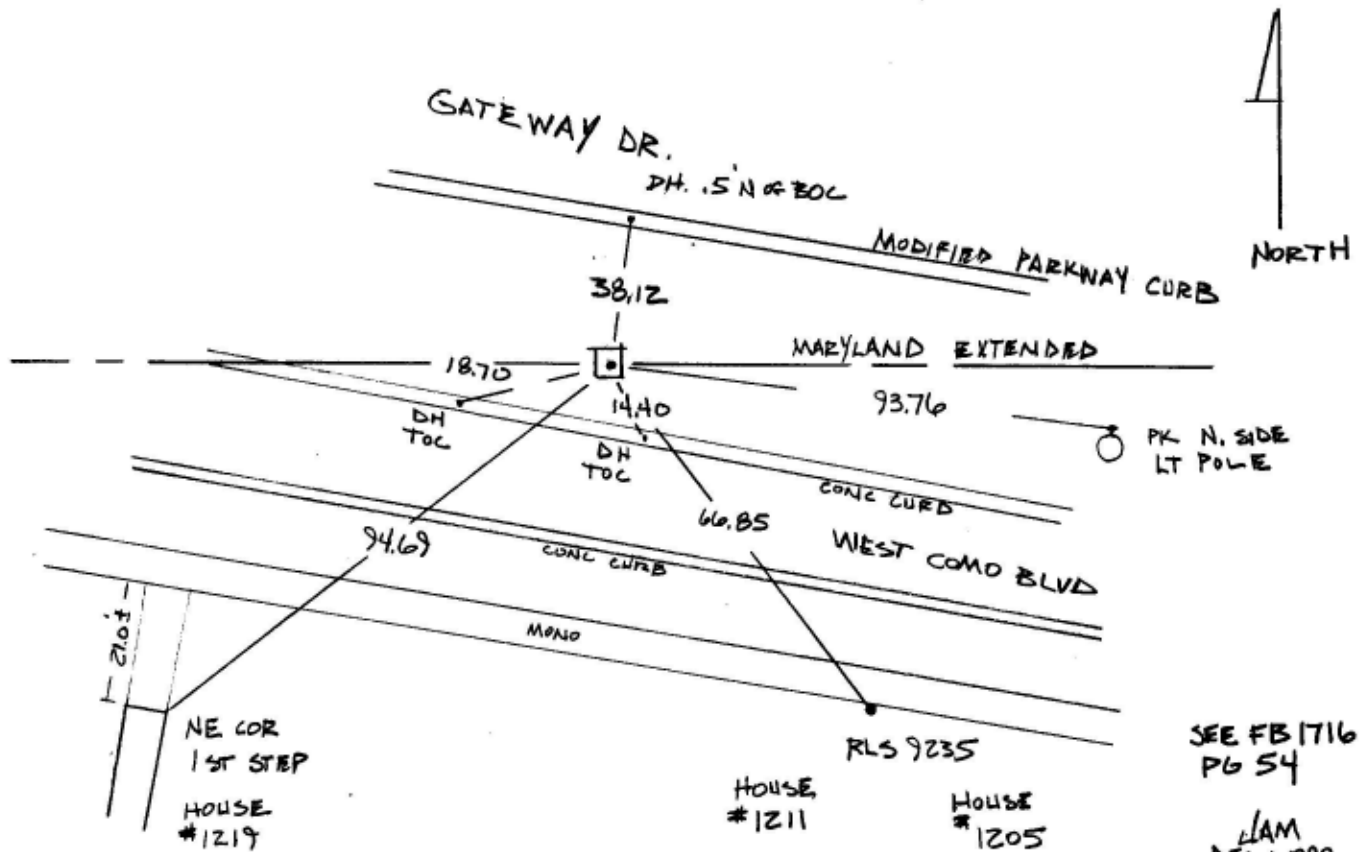
On NOV 23 1998 found a GRANITE MEANDER CORNER 2.0'

BELOW GRADE FROM TIES, PLACED CIM ABOVE, RETIED

left monument as found       lowered monument       removed monument (explain)

On \_\_\_\_\_ placed a \_\_\_\_\_

SKETCH OF REFERENCE TIES



Statement of evidence relative to this corner is available from St. Paul Public Works Dept., Survey Division

I hereby certify that this document and the data contained herein was prepared by me or under my direct supervision.

Jeffrey L. Gross 12/8/98  
SIGNATURE DATE  
Registration No. 13141

- Land Surveyor       County Surveyor
- Professional Engineer
- Chief Surveyor, City of St. Paul

Office of The County Recorder, County of Ramsey

I hereby certify that this document was filed in the county

Recorders office at \_\_\_\_\_ m. on the \_\_\_\_\_ day of \_\_\_\_\_

County Recorder \_\_\_\_\_

By \_\_\_\_\_, Deputy

DOCUMENT NUMBER \_\_\_\_\_