

CERTIFICATE OF LOCATION OF GOVERNMENT CORNER

CITY MON. NO. 276

OLD INDEX NO. _____

East 1/4 Corner of Section 20 Township 28N Range 23W, 4th P.M.

STATE OF MINNESOTA, County of Ramsey

At the corner location shown on the sketch:

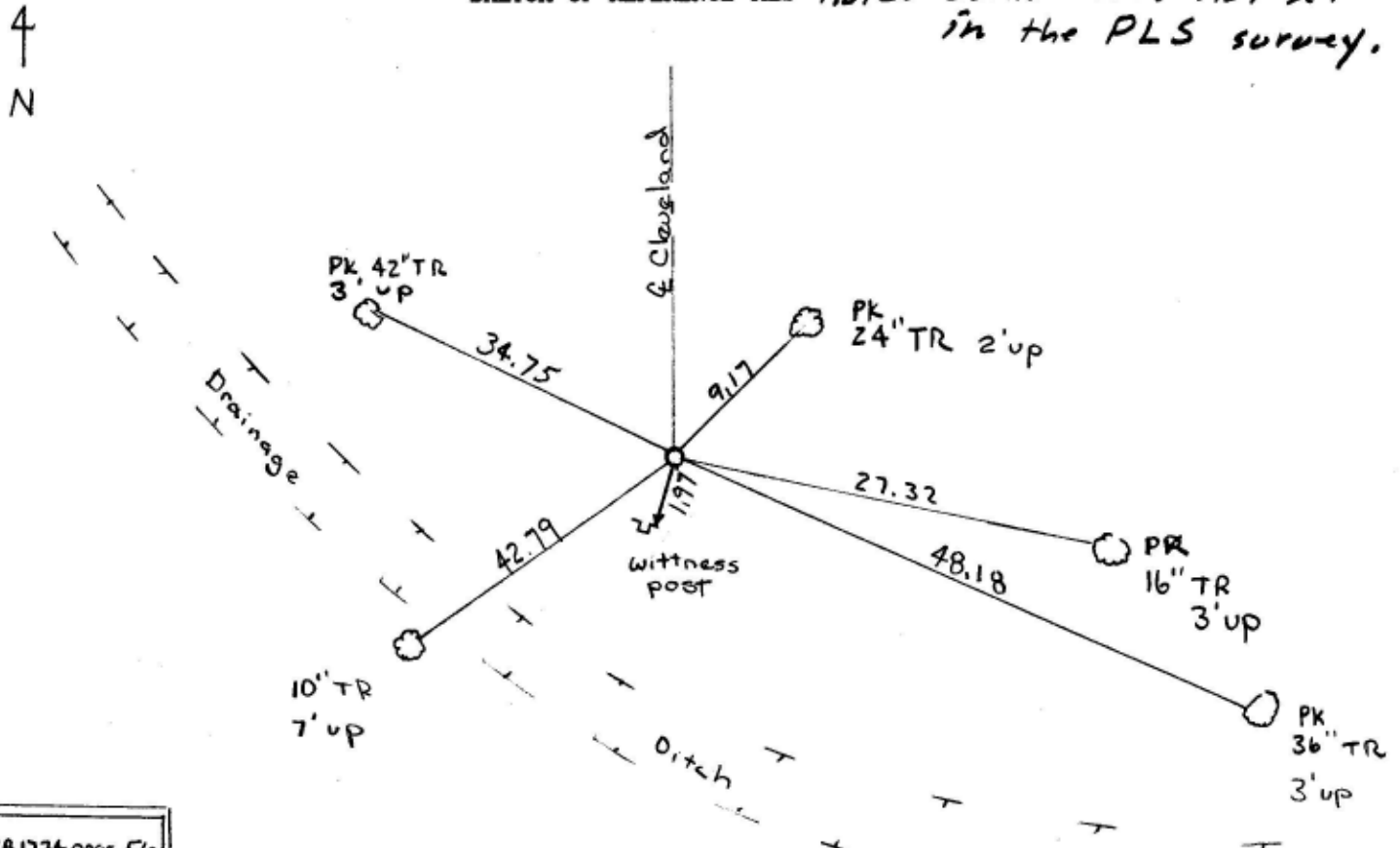
On 3-30-99 found a Rebar and verified monument position
date

- left monument as found
 lowered monument
 removed monument (explain)

On 3-31-99 placed a AIM in concrete base
date

SKETCH OF REFERENCE TIES

Note: Corner was not set in the PLS survey.



See FB1734 page 56
RW MS LL

Statement of evidence relative to this corner is available from the St. Paul Public Works Dept., Survey Division

I hereby certify that this document and the data contained herein was prepared by me or under my direct supervision.

Jeffrey A. Jones 4/20/99
SIGNATURE DATE

Registration No. 13144

- Land Surveyor County Surveyor
 Professional Engineer
 Chief Surveyor, City of St. Paul

Office of The County Recorder, County of Ramsey

I hereby certify that this document was filed in the county
Recorders office at _____ M. on the _____ day of _____

County Recorder _____

By _____, Deputy

DOCUMENT NUMBER _____