

TIPPED

0272-2596-A

Index No. MONT 272

OLD INDEX No 2596

CERTIFICATE OF LOCATION OF GOVERNMENT CORNER

North Quarter Corner of Section 23, Township 28 N, Range 22 W, 4th P.M.

STATE OF MINNESOTA, County of Ramsey

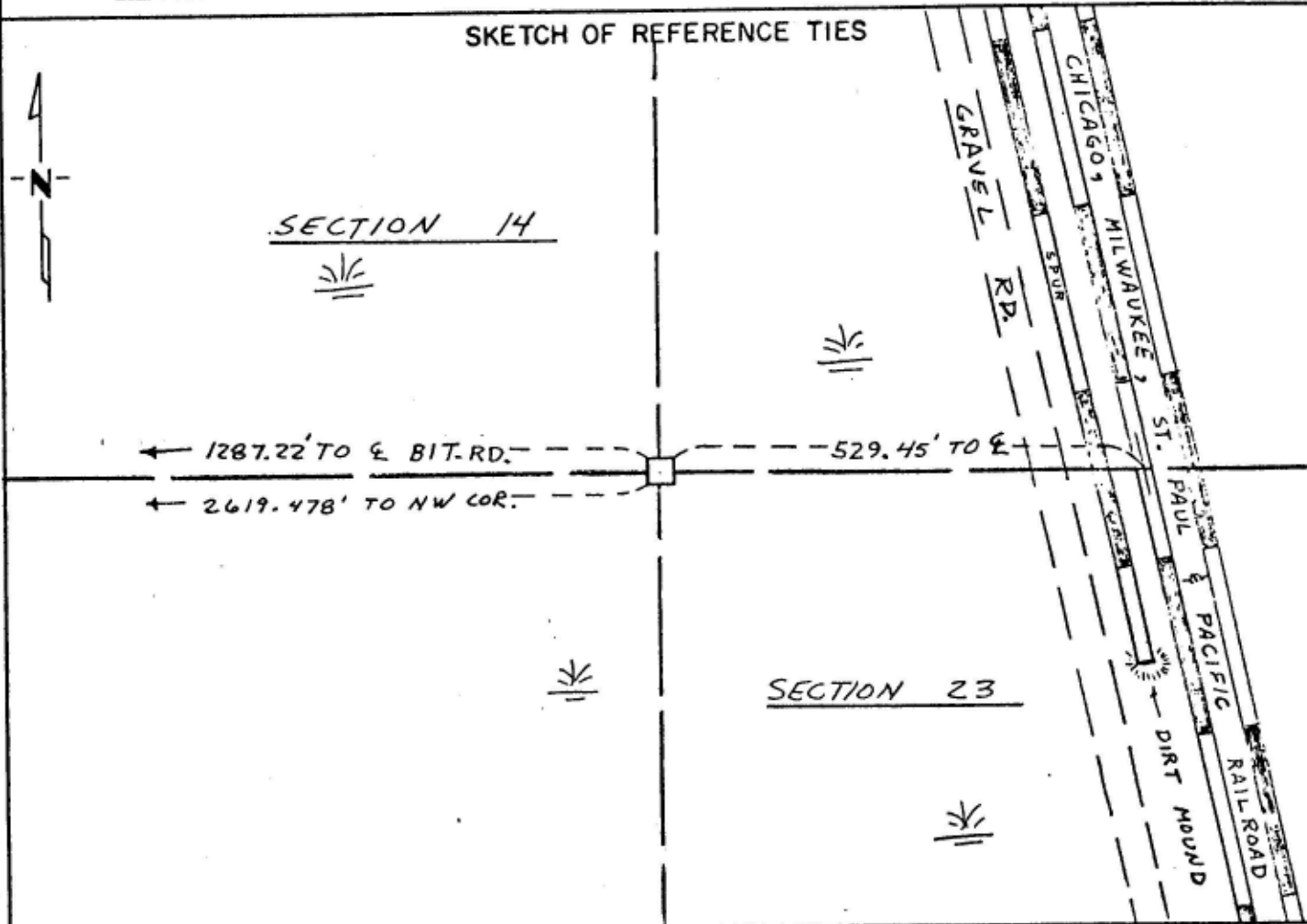
At the corner location shown on the sketch:

On 4-21-76 found a 8"x8" Granite Monument
DATE

left monument as found, lowered monument, removed monument (explain)

On 4-21-76 placed a 6' Steel Fence Post Along the East Edge
DATE of the Monument

SKETCH OF REFERENCE TIES



Statement of evidence relative to this corner location is on back of page.

I hereby certify that this document and the data contained herein was prepared by me or under my direct supervision.

David D. Pearson 5/25/76
SIGNATURE DATE

Registration No. 11752

Land Surveyor, Professional Engineer

County Surveyor, County Engineer

OFFICE OF THE REGISTER OF DEEDS

County of _____

I hereby certify that this document was filed in the Reg. of Deeds office at _____ .M. on the _____ day of _____ A.D., 19 _____

Register of Deeds _____

By _____, Deputy

DOCUMENT NO. _____

Scanned 5/27/99