

CERTIFICATE OF LOCATION OF GOVERNMENT CORNER

NE Corner Corner of Section 22, Township 28, Range 22, P.M.

STATE OF MINNESOTA, County of Ramsey

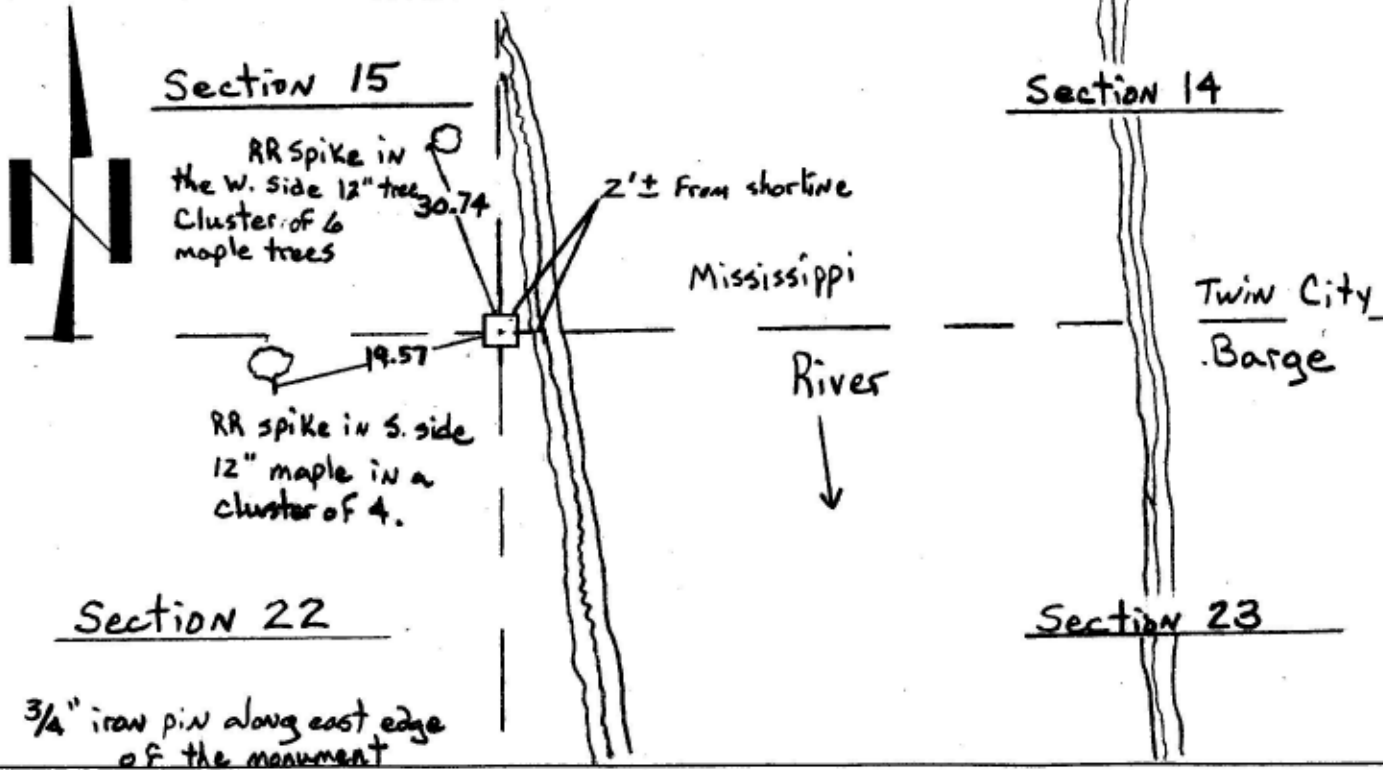
At the corner location shown on the sketch:

X On Jan 1991 found a 8x8 Granite Monument with an iron post next to it.

X left mon. as found [] lowered mon. [] removed mon.(explain)

[] On _____ placed a _____

SKETCH OF REFERENCE TIES



Statement of evidence relative to this corner location is on back of page.

I hereby certify that this document and the date contained herein was prepared by me or under my supervision.

Signature: William J. Cutting, Date: January 27, 1991

Registration No. 20576

- Land Surveyor Professional Engineer
- County Surveyor County Engineer

Office of the Register of Deeds County of _____

I hereby certify that this document was

filed in the Reg. of Deeds office at _____ M.

on the _____ day of _____ A.D., 19__

Register of Deeds _____ By _____

DOCUMENT NO. _____

Scanned 5/27/99