

CERTIFICATE OF LOCATION OF GOVERNMENT CORNER

CITY MON. NO. 259

OLD INDEX NO. 1269

SE Corner of Section 15 Township 28 Range 23, 4th P.M.

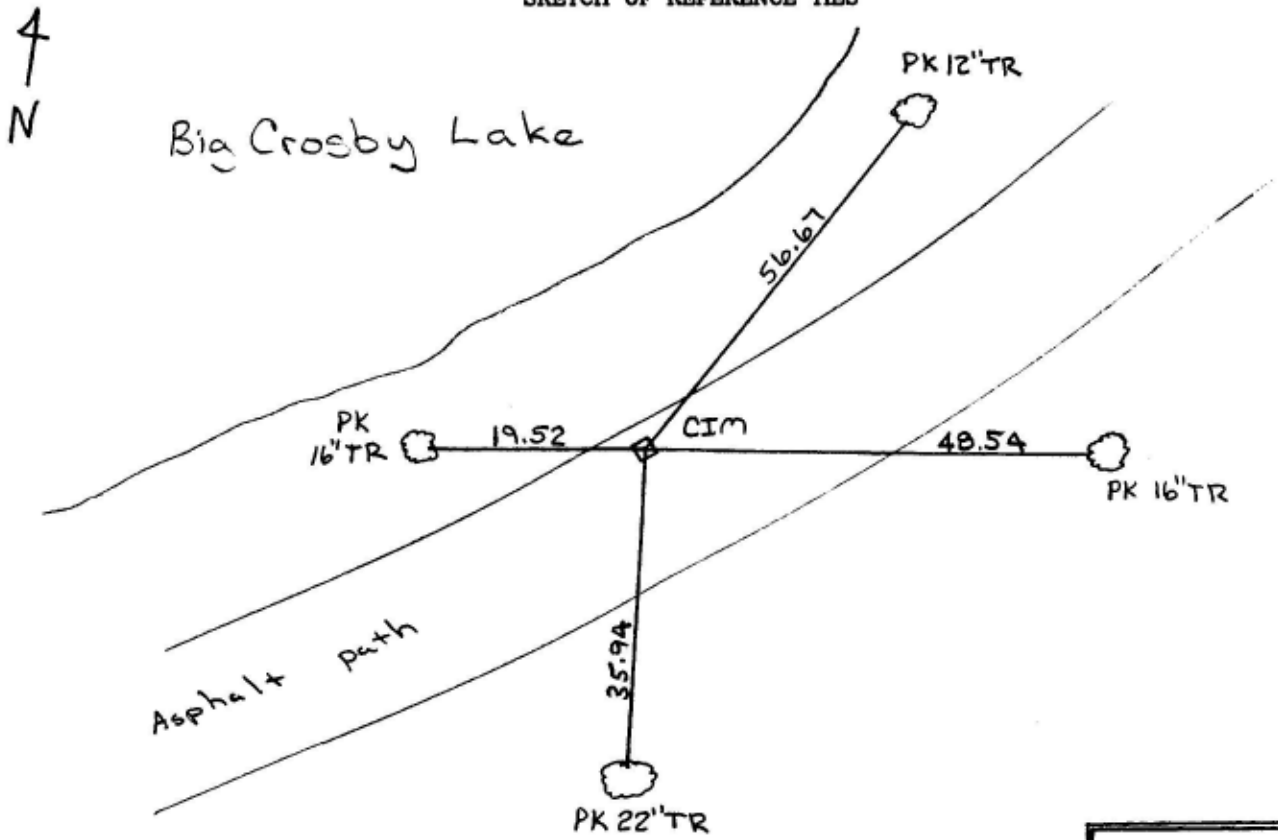
STATE OF MINNESOTA, County of Ramsey
At the corner location shown on the sketch:

On 3-24-1999 found a CIM removed from position
in asphalt path in Crosby Lake Park

- left monument as found lowered monument removed monument (explain)

On 4-2-1999 placed a CIM in concrete @ path grade

SKETCH OF REFERENCE TIES



See FB # 1734 pages 55, 57
RW, MS, LL

Statement of evidence relative to this corner is available from the St. Paul Public Works Dept., Survey Division

I hereby certify that this document and the data contained herein was prepared by me or under my direct supervision.

Alfred J. G... 5/10/99
Registration No. 13144

- Land Surveyor County Surveyor
 Professional Engineer
 Chief Surveyor, City of St. Paul

Office of The County Recorder, County of Ramsey

I hereby certify that this document was filed in the county
Recorders office at _____ M. on the _____ day of _____

County Recorder _____

By _____, Deputy

DOCUMENT NUMBER _____