

0237-1716-C1

CERTIFICATE OF LOCATION OF GOVERNMENT CORNER

CITY MON. NO. 237

OLD INDEX NO. 1716

CENTER Corner of Section 15 Township 28 Range 23, 4 P.M.

STATE OF MINNESOTA, County of Ramsey

At the corner location shown on the sketch:

On Aug 7, 2004 found a steel pin in center of G.M 0.50'

date

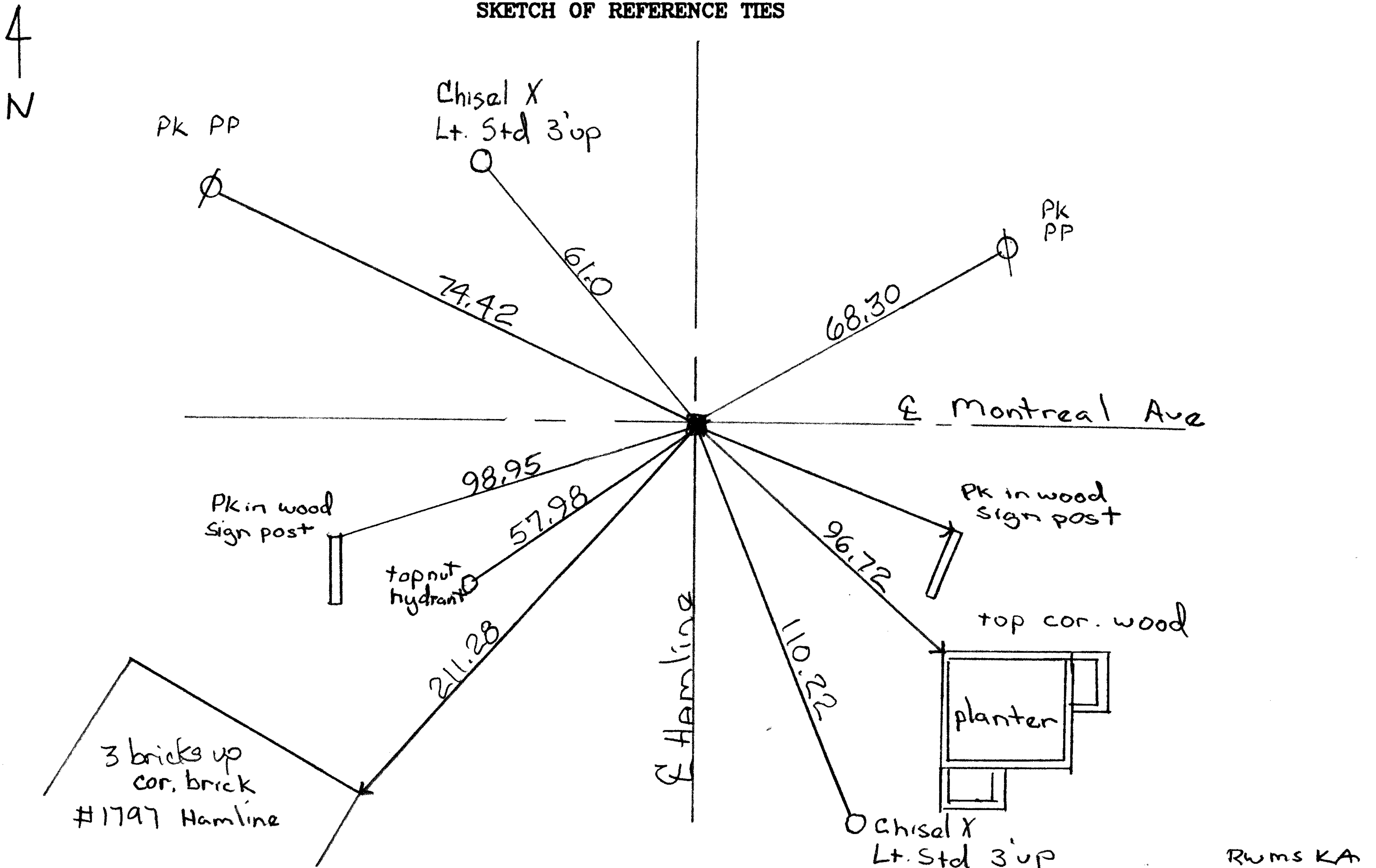
below asphalt surface

left monument as found lowered monument removed monument (explain)

On Aug 7, 2004 placed a 1.0' diameter casting over G.M.

date

SKETCH OF REFERENCE TIES



Statement of evidence relative to this corner is available from the St. Paul Public Works Dept., Survey Division

I hereby certify that this document and the data contained herein was prepared by me or under my direct supervision.

Michael P. Murphy 8/10/04
SIGNATURE DATE

Registration No. 41,001

- Land Surveyor County Surveyor
- Professional Engineer
- Chief Surveyor, City of St. Paul

Office of The County Recorder, County of Ramsey

I hereby certify that this document was filed in the county
Recorders office at _____ M. on the _____ day of _____

County Recorder _____

By _____, Deputy

DOCUMENT NUMBER _____

0237-1716-C2

BM	0.94	207.65	206.71	HYD SWC Montreal & Hamlin
			5.24 202.41	Top casting
			5.67 201.98	Top gm 237