

# CERTIFICATE OF LOCATION OF GOVERNMENT CORNER

CITY MON. NO. 233

OLD INDEX NO. \_\_\_\_\_

Center Corner of Section 17 Township 28 Range 23, \_\_\_\_\_ P.M.

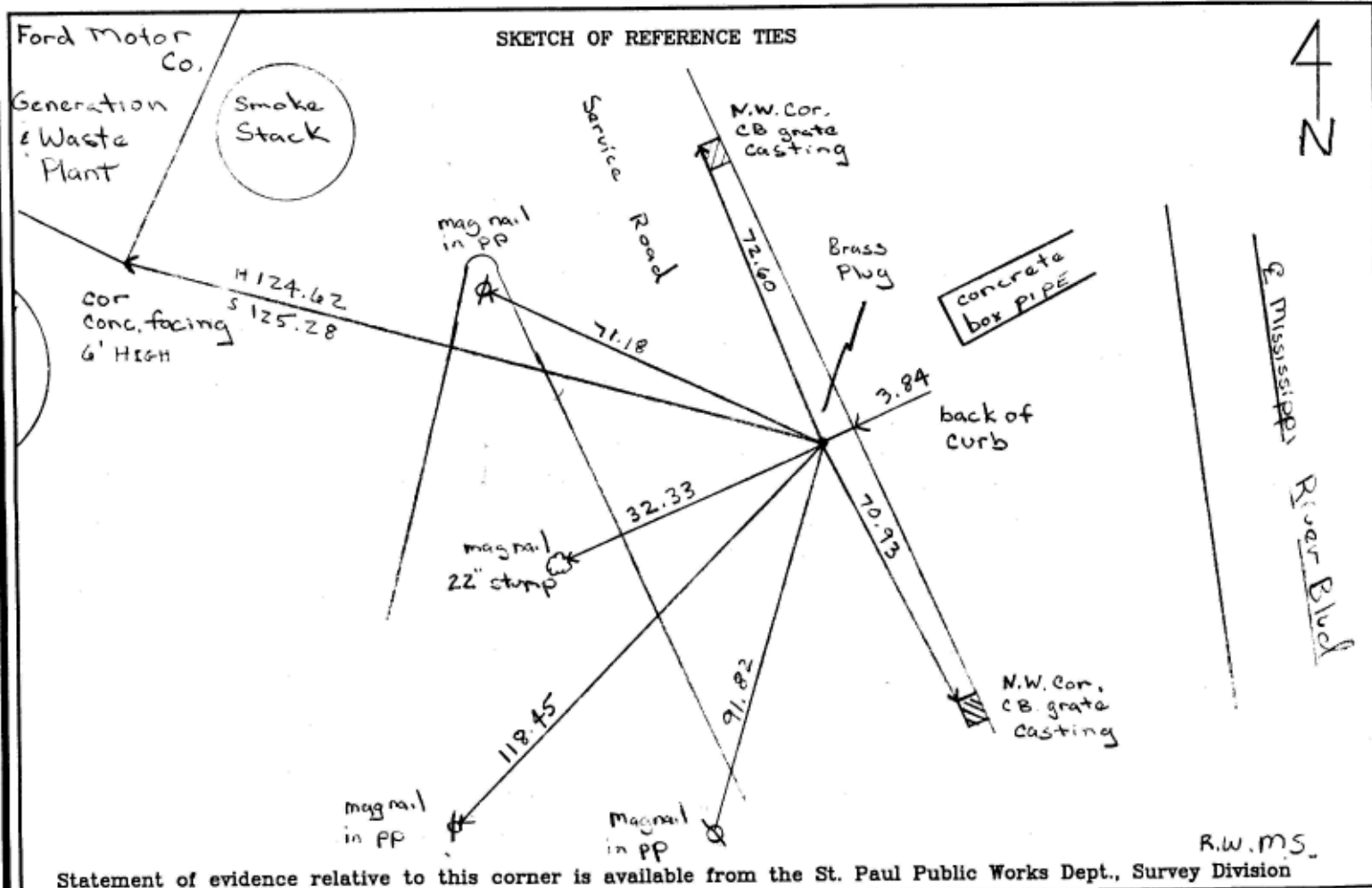
STATE OF MINNESOTA, County of Ramsey

At the corner location shown on the sketch:

On March 27, 2002 found a small pk nail in drill hole  
in concrete pavement

- left monument as found
- lowered monument
- removed monument (explain)

On March 27, 2002 placed a brass plug in concrete pavement



Statement of evidence relative to this corner is available from the St. Paul Public Works Dept., Survey Division

R.W.M.S.

I hereby certify that this document and the data contained herein was prepared by me or under my direct supervision.

Jeffrey J. Gorman 3/28/02  
 SIGNATURE DATE  
 Registration No. 13144  
 Land Surveyor     County Surveyor  
 Professional Engineer  
 Chief Surveyor, City of St. Paul

Office of The County Recorder, County of Ramsey  
 I hereby certify that this document was filed in the count  
 Recorders office at \_\_\_\_\_ M. on the \_\_\_\_\_ day of \_\_\_\_\_  
 \_\_\_\_\_  
 County Recorder \_\_\_\_\_  
 By \_\_\_\_\_, Deputy  
 DOCUMENT NUMBER \_\_\_\_\_