

CERTIFICATE OF LOCATION OF GOVERNMENT CORNER

CITY MON. NO. 223

OLD INDEX NO. XXXX

S.E. Corner of Section 7 Township 28 Range 22, 4 P.M.

STATE OF MINNESOTA, County of Ramsey

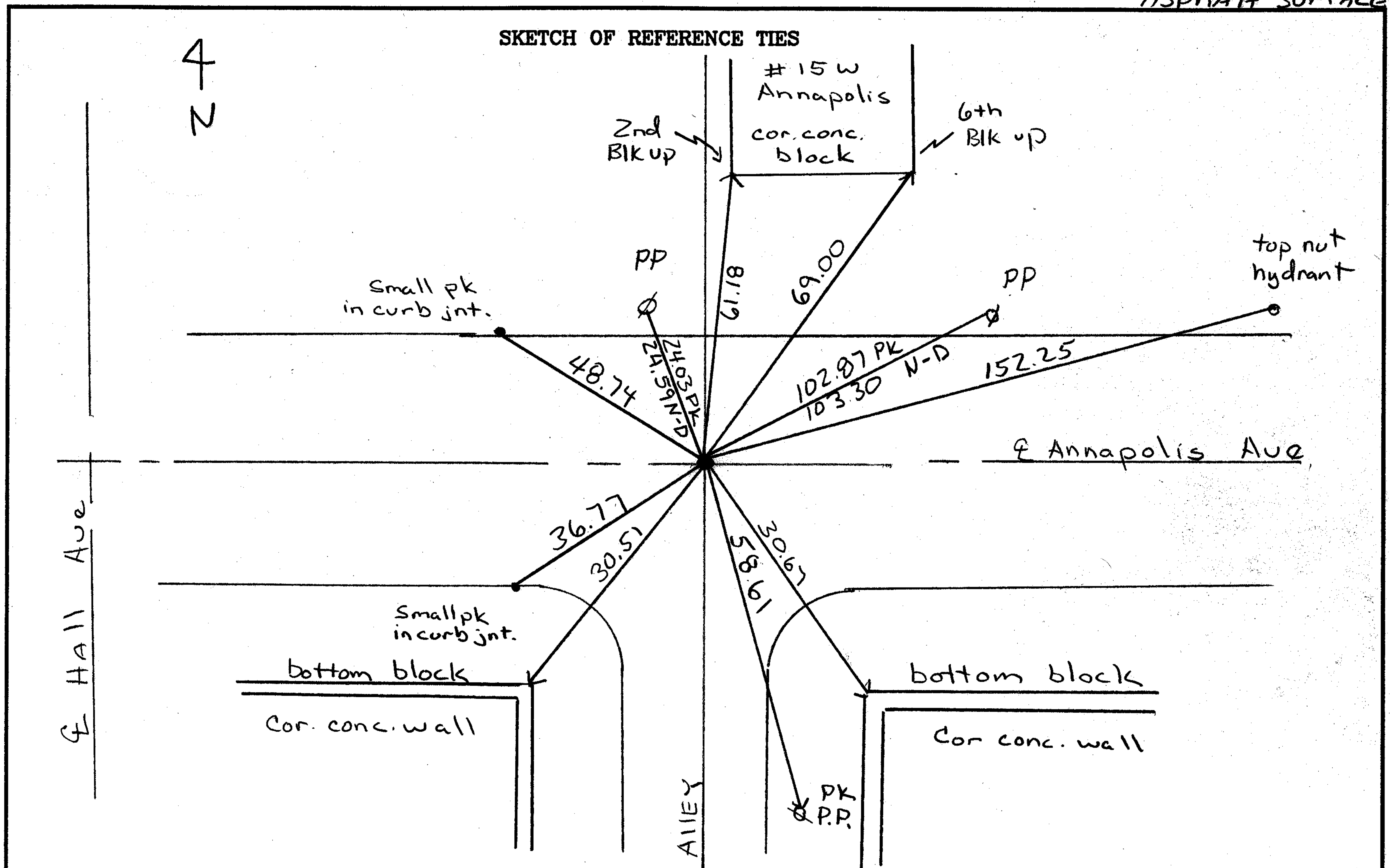
At the corner location shown on the sketch:

On Oct 30, 2004 found a drill hole 0.2 below Asphalt grade in conc.

base pavement drilled hole 5" deep place 1/2" rebar with brass cap/placed 4-2ft

- left monument as found
- lowered monument
- removed monument (explain) Straddles

On Oct 30, 2004 placed a Brass Cap "St. Paul Surveyors" .02' below ASPHALT SURFACE



Statement of evidence relative to this corner is available from the St. Paul Public Works Dept., Survey Division RWMs

I hereby certify that this document and the data contained herein was prepared by me or under my direct supervision.

Michael P Murphy Nov 2, 2004
SIGNATURE DATE

- Registration No. 41,001
- Land Surveyor
 - County Surveyor
 - Professional Engineer
 - Chief Surveyor, City of St. Paul

Office of The County Recorder, County of Ramsey

I hereby certify that this document was filed in the county Recorders office at _____ M. on the _____ day of _____

County Recorder _____
By _____, Deputy

DOCUMENT NUMBER _____

0223-XXXXB2

10-30-04

Bm	0.67	259.86		259.19		HYD NEC Annapolis and Hall
	1.91	249.51	12.26	247.60		BRASS PLUG Mont. 223
			9.14	240.37	(240.91)	HYD NWL HUMPHOLT ANNAPOLIS

(1995)

NEW HYDRANT
1998