

CERTIFICATE OF LOCATION OF GOVERNMENT CORNER

MON. NO. 216
OLD INDEX No 694

NORTH 1/4 Corner of Section 15 Township 28 Range 22, 4TH P.M.

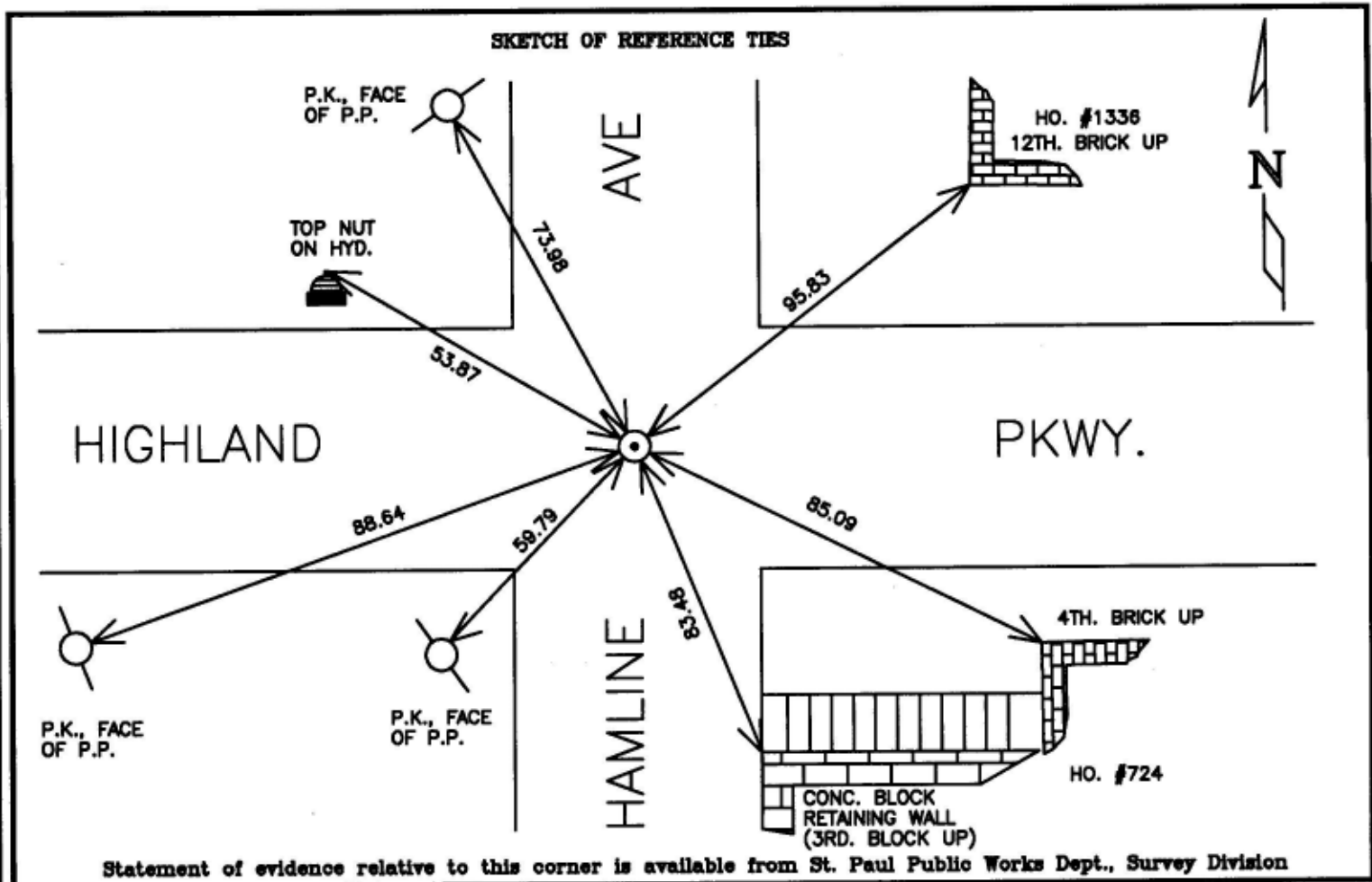
STATE OF MINNESOTA, County of Ramsey

At the corner location shown on the sketch:

On DEC. 7, 1995 found a C.I.M., .05' +/- BELOW GRADE
AND RETIED

- left monument as found
 lowered monument
 removed monument (explain)

On _____ placed a _____



I hereby certify that this document and the data contained herein was prepared by me or under my direct supervision.

Richard C. Penner DEC. 28, 1995

- Registration No. 23300
- Land Surveyor County Surveyor
 Professional Engineer
 Chief Surveyor, City of St. Paul

Office of The County Recorder, County of Ramsey
I hereby certify that this document was filed in the county

Recorders office at _____ m. on the _____ day of _____

County Recorder _____
By _____, Deputy
DOCUMENT NUMBER _____