

# CERTIFICATE OF LOCATION OF GOVERNMENT CORNER

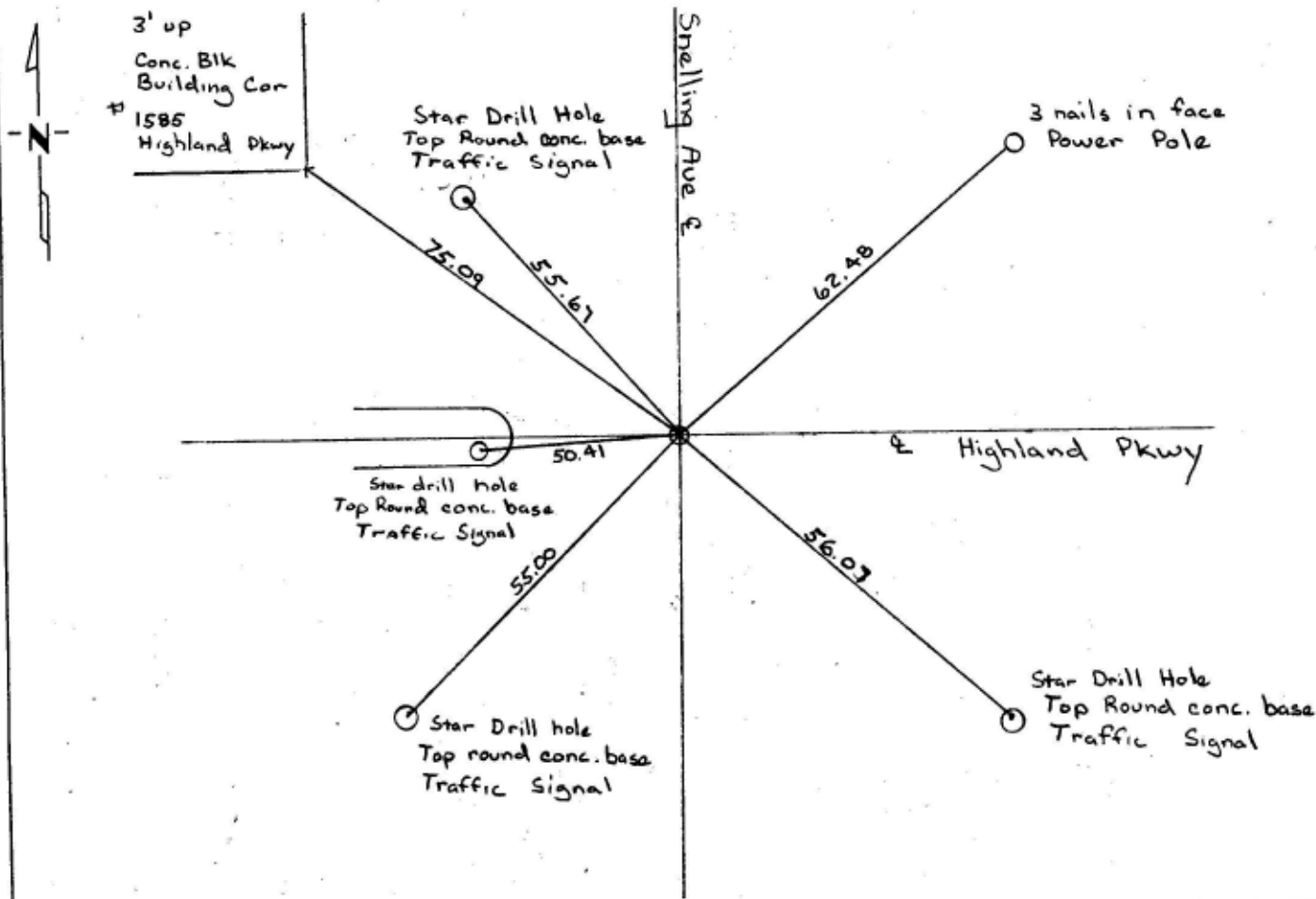
North West Corner of Section 15, Township 28, Range 23, \_\_\_\_\_ P.M.

STATE OF MINNESOTA, County of Ramsey

At the corner location shown on the sketch:

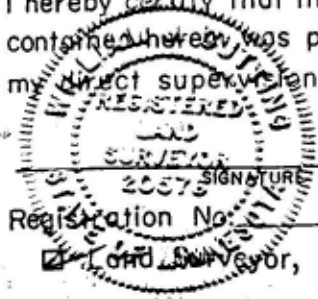
- On July 28, 1992 found a cast iron disc. 1.0' Below Finish Grade  
bent over in concrete  
 left monument as found,  lowered monument,  removed monument (explain)
- On July 28, 1992 placed a cast iron monument in concrete 0.05' below  
finished grade

### SKETCH OF REFERENCE TIES



Statement of evidence relative to this corner location is on back of page.

I hereby certify that this document and the data contained hereon was prepared by me or under my direct supervision.



August 31, 1992  
DATE

Registration No. \_\_\_\_\_

Land Surveyor,  Professional Engineer

County Surveyor,  County Engineer

OFFICE OF THE COUNTY RECORDER  
County of \_\_\_\_\_

I hereby certify that this document was filed in the Co. Recorders office at \_\_\_\_\_ M. on the \_\_\_\_\_ day of \_\_\_\_\_ A.D., 19 \_\_\_\_\_

County Recorder \_\_\_\_\_  
By \_\_\_\_\_, Deputy  
DOCUMENT NO. \_\_\_\_\_

Scanned 5/19/99