

# CERTIFICATE OF LOCATION OF GOVERNMENT CORNER

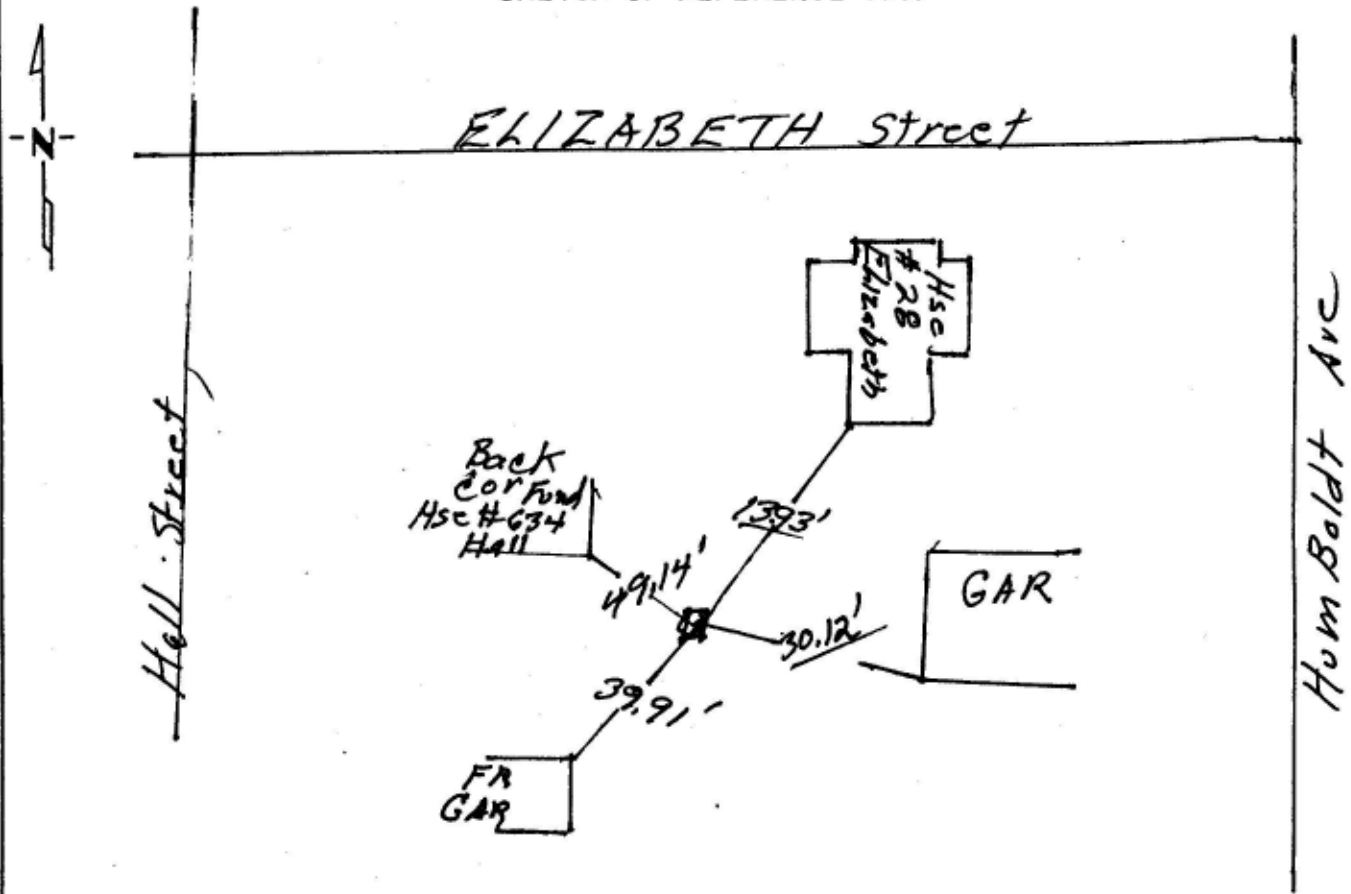
East 1/4 cor Corner of Section 7, Township 28, Range 22, 4th P.M.

STATE OF MINNESOTA, County of Ramsey

At the corner location shown on the sketch:

- On 10/12/95 found a Granite Monument at  
Above Grade (Gravel Driveway)
- left monument as found,  lowered monument,  removed monument (explain)
- On \_\_\_\_\_ placed a \_\_\_\_\_

### SKETCH OF REFERENCE TIES



Statement of evidence relative to this corner location is on back of page.

I hereby certify that this document and the data contained herein was prepared by me or under my direct supervision

William J. Guthrie REGISTERED LAND SURVEYOR  
SIGNATURE DATE 10/12/95

- Registration No. \_\_\_\_\_
- Land Surveyor,  Professional Engineer
  - County Surveyor,  County Engineer

OFFICE OF THE COUNTY RECORDER  
County of \_\_\_\_\_

I hereby certify that this document was filed in the Co. Recorders office at \_\_\_\_\_ .M. on the \_\_\_\_\_ day of \_\_\_\_\_ A.D., 19 \_\_\_\_\_

County Recorder \_\_\_\_\_  
By \_\_\_\_\_, Deputy  
DOCUMENT NO. \_\_\_\_\_