

# CERTIFICATE OF LOCATION OF GOVERNMENT CORNER

City ID: 0200

Old Index #: 159

County ID #: 658

EAST QUARTER Corner of Section 12, Township 28 North,  
Range 23 West, Fourth Principal Meridian, County of Ramsey, State of Minnesota,  
At the corner location shown on the sketch:

On 12/2/2025 found GM 0.2 BELOW GRADE IN FORESTED AREA.

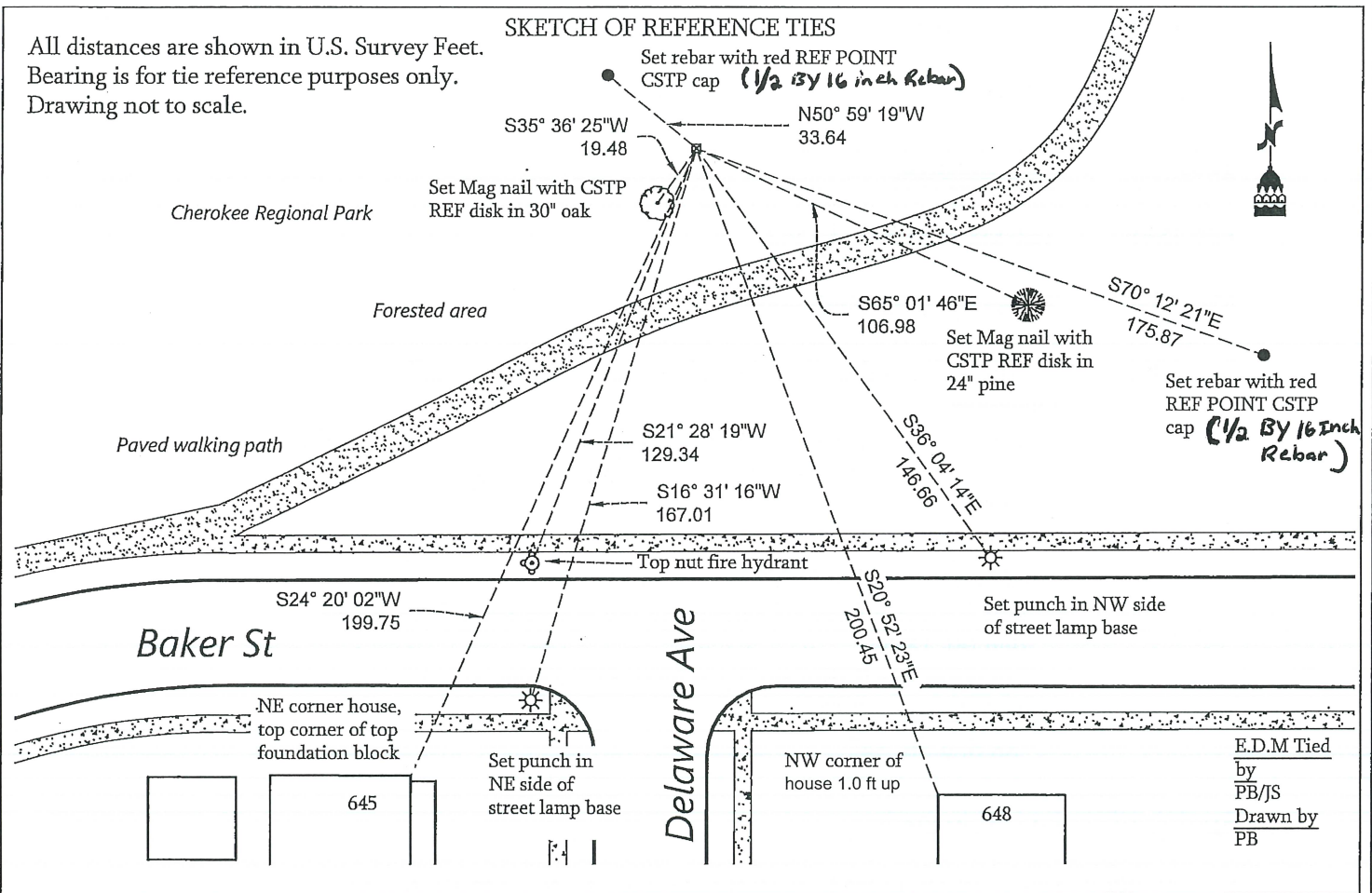
SET AND REESTABLISHED TIES WITH TRIMBLE S6 TOTAL STATION.

left monument as found       lowered monument       removed monument (explain)

On \_\_\_\_\_ placed a \_\_\_\_\_

### SKETCH OF REFERENCE TIES

All distances are shown in U.S. Survey Feet.  
Bearing is for tie reference purposes only.  
Drawing not to scale.



I hereby certify that this survey, plan, or report was prepared by me, or under my direct supervision, and that I am a duly Licensed Land Surveyor under the laws of the State of Minnesota.

Kevin Kaley  
 Kevin Kaley, LS  
 City Surveyor, Saint Paul, Minnesota

Registration No. #53546

12/10/2025  
 Date

Office of the County Surveyor, Ramsey County, Minnesota

I hereby certify that this document was filed with the County Surveyor's Office at 8:00 A.M. on the 4<sup>th</sup> day of

March, 2026  
Daniel Baar  
 Daniel Baar, LS

County Surveyor, Ramsey County, Minnesota

**PLS Description: 1/4 Corner EQ12-28-23/WQ7-28-22 4th P.M.**

**St. Paul Monument #: 200**

**St. Paul Old Index #: 0159**

**Ramsey County #: 0658**

**Location: Randolph Ave (prod) & Delaware St (prod)**

Jul 8, 1853 A wood post was placed by Jessie Jarrett at the corner during the Public Land Survey.

1890 FB 320 Shows:  
mont at SE corner sec 12 - E 1/4 corner sec 12 2625.34 ft  
W 1/4 corner sec 7 - cen 1/4 corner sec 7 2528.61 ft

1970+ Granite monument at grade tied out.

1972 Fd GM to grade. See FB 1689 p.7

1985 Ties checked.

Feb 1989 Travers see FB 1713 p.2

Mar 1990 Traverse ran through corner.

Dec 1991 Position allowed to float in a city-wide least square adj.  
Distances:  
cen 1/4 corner sec 12 - E 1/4 corner sec 12 2607.42 ft  
E 1/4 corner sec 12 - meander cor on E line sec 12 rt bank  
1037.93 ft  
E 1/4 corner sec 12 - SE corner sec 12 2625.35 ft  
Angles measured at E 1/4 corner sec 12:  
cen 1/4 corner sec 12 - meander cor E line sec 12 rt bank 91  
deg 00' 18.5"  
meander cor E line sec 12 rt bank SE corner sec 12  
180 deg 02' 47.5"  
88 deg 56' 54"

April 2, 1991 Fd GM to grade

Jan. 22, 2002 Elev 238.18 on GM. 0.10 ft below grade. See FB 1736 p.11

Sept. 18, 2008 Elev 238.18 on GM. See FB 1740 p.72

Nov. 14, 2012 Found GM 0.1 Below surface grade. Photo taken. Position established by topo using  
Trimble T6 with RTK-VRS GPS control determined using Trimble R8 Elev. 238.02

Dec. 2, 2025 Found GM 0.2 below grade, set new ties and took pictures.

